

LINCOLN COUNTY U.S. PUBLIC LAND TIE SHEET RECORD

SECTION 24
TOWNSHIP 31N
RANGE 5 E

243151
NO.

CORNING
CITY, VILLAGE, TOWN

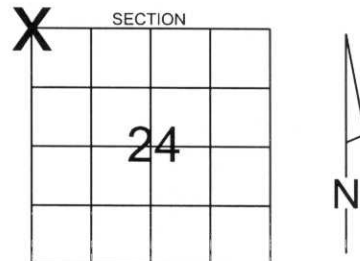
LANDMARK

CORNER INDENTITY: LINCOLN COUNTY BERNSTEN MOMUMENT

LINCOLN COUNTY COORDINATE: N: 116377.7520
E: 359326.1820

DATE OF SURVEY: May 24, 2006
SURVEY PARTY: Rutzen/Dahlvig

FOUND
SET
RE-SET
RE-TIED



Description of monument found at this corner and if was accepted, state all evidence (material, testimonial, occupational, plats, records, other monuments) used as a basis for accepting. If not accepted or if nothing was found, state evidence used as basis for establishing location. If reestablished through lost corner proportionate methods, indicate all monuments, distances and directions used to establish.

BASIS FOR MONUMENT LOCATION:

(DESCRIBE METHOD OF SURVEY AND CONER AUTHENTICATION)

Found Lincoln County monument 14" below pavement(Held), 3 ties found, 1 tie set.



CERTIFIED CORRECT:

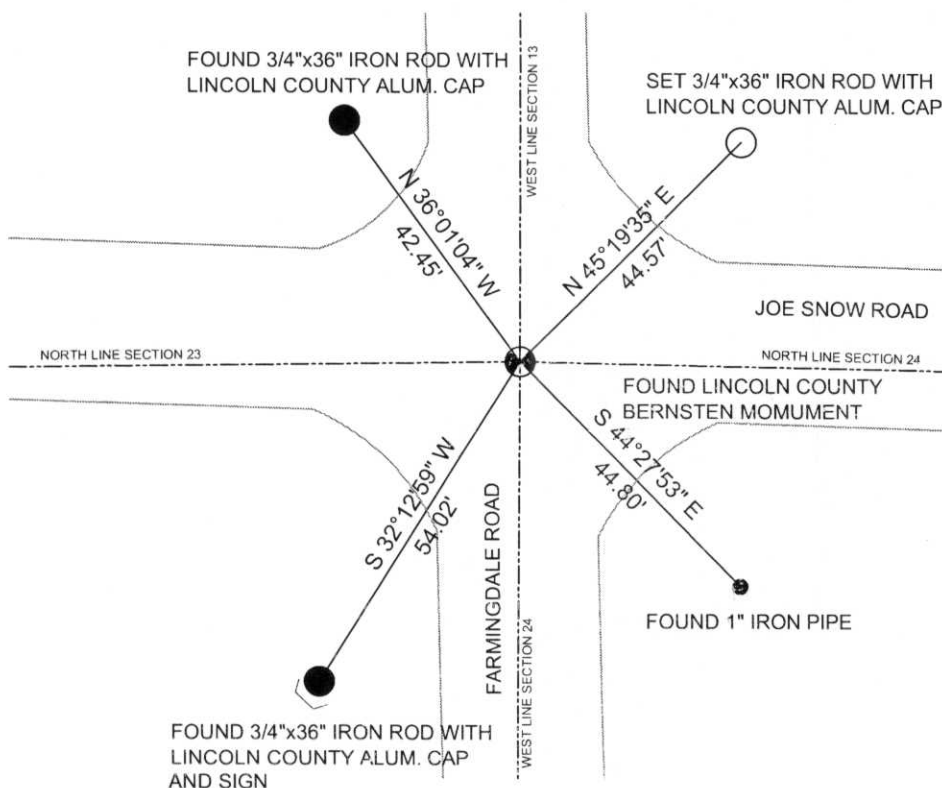
Ronald K. Jacobson
Ronald Jacobson RLS 2059-008
Registered Land Surveyor

DATE: June 6, 2006

COMPANY Central Wisconsin Engineers & Architects

TIE SKETCH:

SHOW MINIMUM OF FOUR (4) HORIZONTAL TIE DISTANCES TO FIXED WITNESS MONUMENTS.
DESCRIBE ALL MONUMENTS FOUND OR SET. ALL DISTANCES SHOWN IN US SURVEY FEET.



RECEIVED BY LINCOLN COUNTY
SURVEYOR THIS 12TH DAY
OF June 20 06
Tom Dahl
COUNTY SURVEYOR

COORDINATES ARE REFERENCED TO LINCOLN COUNTY COORDINATE SYSTEM AS DEVELOPED BY THE WI. DEPARTMENT OF TRANSPORTATION AND ARE BASED ON GPS OBSERVATIONS TO CONTROL POINTS AS SUPPLIED BY LINCOLN COUNTY.

NOT TO SCALE
BEARINGS REFERENCED TO LINCOLN COUNTY COORDINATE SYSTEM

M-21

U.S. PUBLIC LAND SURVEY MONUMENT RECORD

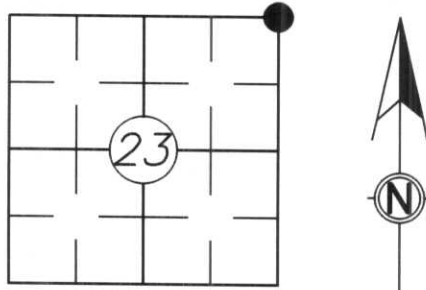
Note: This form is intended and designed to fulfill all requirements of Wisconsin Administrative Code, Chapter A-E 5.02, U.S. Public Land Survey Monument Record (3) (a) (b) (c) (d) (e) (f) (g) (h) (l). An additional sheet may be added if necessary to conform with said requirements.

(a) Corner location: Township 31 North

Range 5 East

Town/City/Village CORNING

County LINCOLN



Section 23

(b) (f) (g) (h) Description of monument found at this corner and if it was accepted, state all evidence (material, testimonial, occupational, plats, records, other monument(s) used as a basis for accepting. If not accepted or if nothing was found, state evidence used as a basis for establishing location. If reestablished through last corner proportionate methods, indicate all monuments, distances and directions used to establish.

History of original corner established:

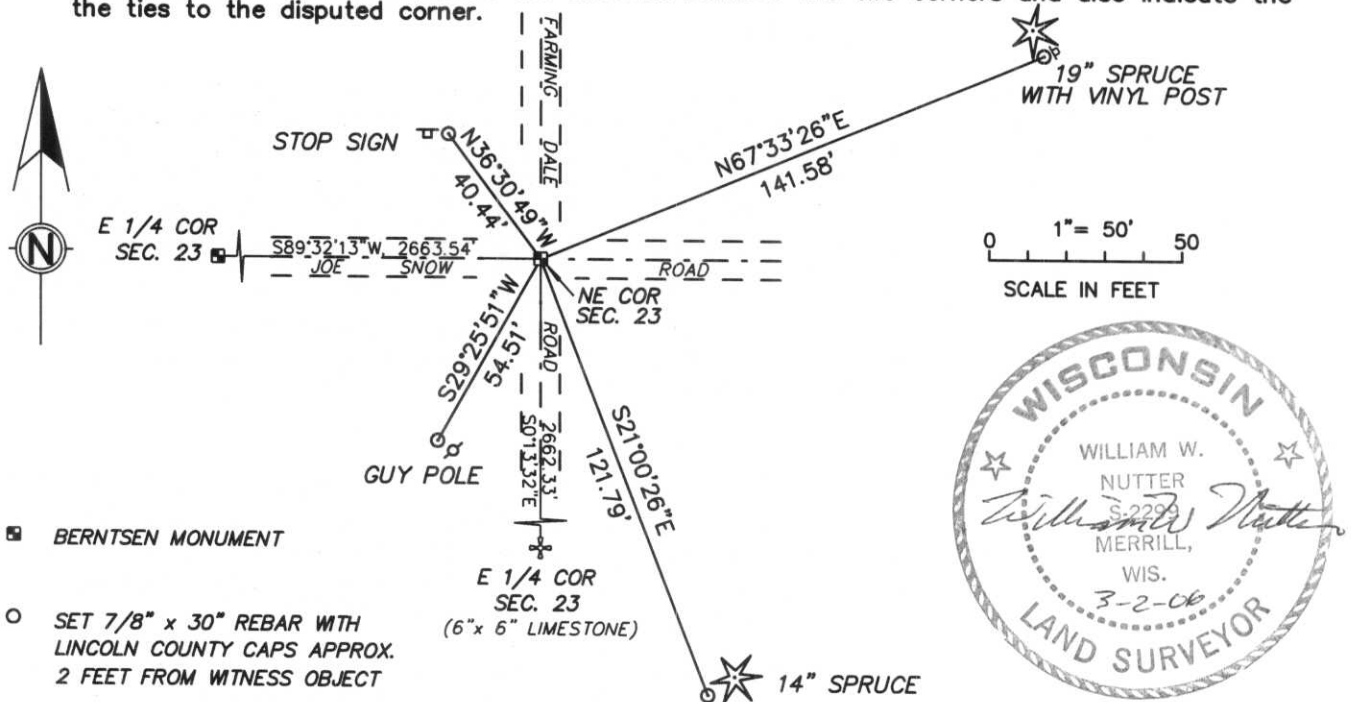
Original Survey by Richard O. Chaney, October 1852

Set post with the following bearing trees: 15" Hemlock, N75°E, 25 links
10" Hemlock, S56°W, 47 links

Description of corner evidence found:

The Town of Corning used its backhoe at the intersection of Farmingdale Road and Joe Snow Road. We dug over six feet down and a twelve by sixteen foot hole and found no evidence of the corner. We placed a Berntsen monument at the intersection of centerlines as best available evidence of the corner and tied to 7/8" rebar with Lincoln County caps. Witnessed by Mike Schmidt.

(c) (d) (e) Plan view of corner with ties to at least 4 witness monuments. If in disagreement with previous established corner, show the distance between the two corners and also indicate the ties to the disputed corner.



(l) I, William W. Nutter RLS, S-2299

(type or print name) certify that the corner location on this record was determined by me or under my direction and control and that this U.S. Public Land Survey Monument Record is correct and complete to the best of my knowledge and belief.

William W. Nutter
Signature

3-2-2006
Date

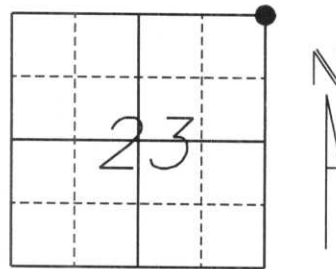
Index No.

M-21

U.S. PUBLIC LAND SURVEY MONUMENT RECORD

Note: This form is intended and designed to fulfill all requirements of Wisconsin Administrative Code, Chapter A-E 5.02, U.S. Public Land Survey Monument Record (3) (a) (b) (c) (d) (e) (f) (g) (h) (l). An additional sheet may be added if necessary to conform with said requirements.

(a) Corner location: Township 31 North
 Range 5 East
 Town/City/Village CORNING
 County LINCOLN



Section 23

(b) (f) (g) (h) Description of monument found at this corner and if it was accepted, state all evidence (material, testimonial, occupational, plats, records, other monuments) used as a basis for accepting. If not accepted or if nothing was found, state evidence used as a basis for establishing location. If reestablished through lost corner proportionate methods, indicate all monuments, distances and directions used to establish.

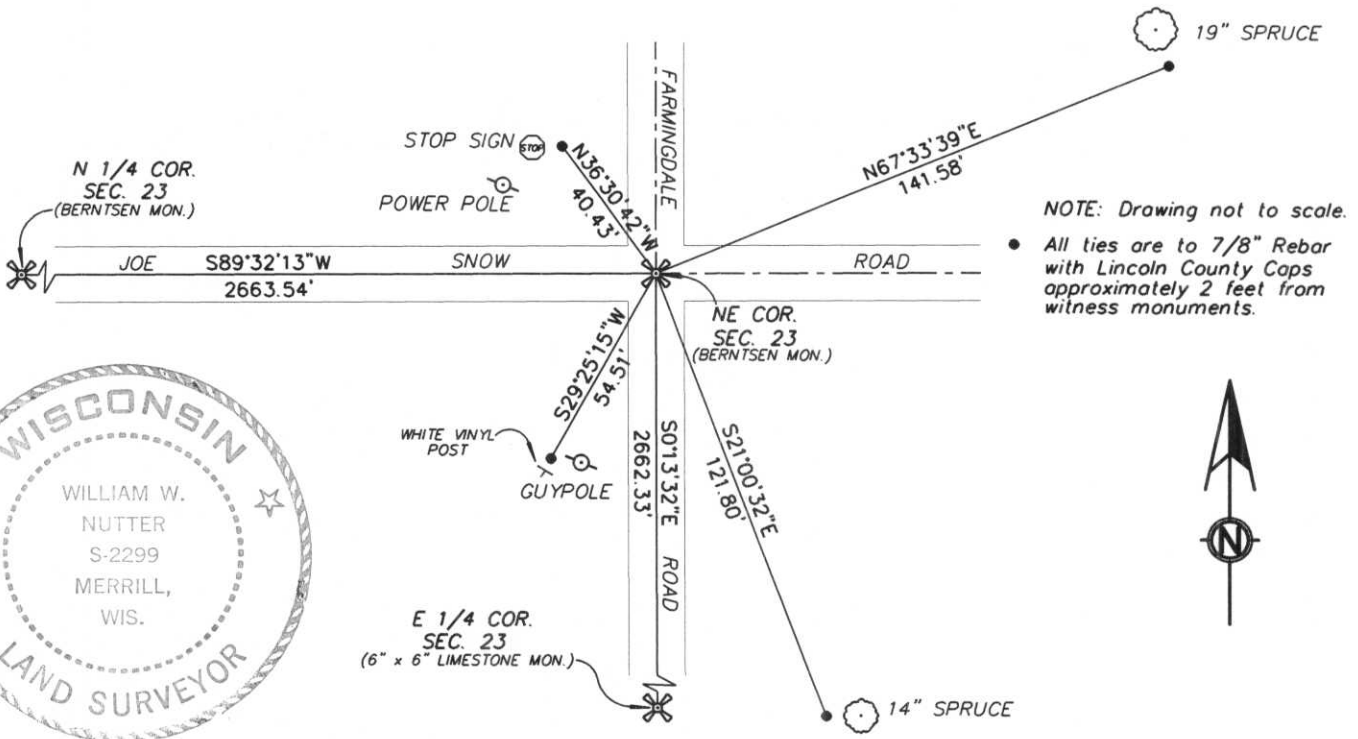
History of original corner establishment:

Originally Surveyed October, 1852 by Richard O. Chaney. Original corner was a wooden post with bearing trees:
 15" Hemlock, N75°E, 25 lks.
 10" Hemlock, S50°W, 47 lks.

Description of corner evidence found:

We dug a 12'x16'x6' deep hole at the intersection of Joe Snow Road and Farmingdale Road down to clay bed, with excavation done by the Town of Corning Backhoe, and found no evidence of the corner. We set a Berntsen Monument at the intersections of Joe Snow Road and Farmingdale Road 6" below road surface as best available evidence. We accepted its position and tied to 7/8" Rebar with Lincoln County Caps.

(c) (d) (e) Plan view of corner with ties to at least 4 witness monuments. If in disagreement with previously established corner, show the distances between the two corners and also indicate the ties to the disputed corner.



(l) I, William W. Nutter RLS, S-2299
 (type or print name) certify that the corner location on this record was determined by me or under my direction and control and that this U.S. Public Land Survey Monument Record is correct and complete to the best of my knowledge and belief.

William W. Nutter 4-12-2004
 Signature Date

(revised 2/97)

Index No.

M-21







