

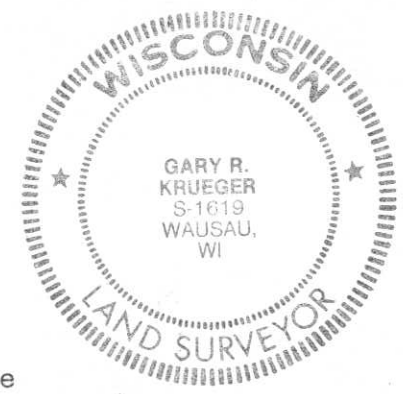
CERTIFIED LAND CORNER RESTORATION

Index No. G-1

State of Wisconsin }
County of Lincoln } ss.

History of original corner establishment:

Wood post set by original Government Surveyor



I, Gary R. Krueger, do hereby certify that on the Eighth day of November, 1984, I found evidence of the West 1/4 corner of Section 7 Township 31, North, Range 6 East, Fourth, Principal Meridian, as described hereon; and that from this evidence I established a new monument and accessories as described hereon to perpetuate the original location of this corner.

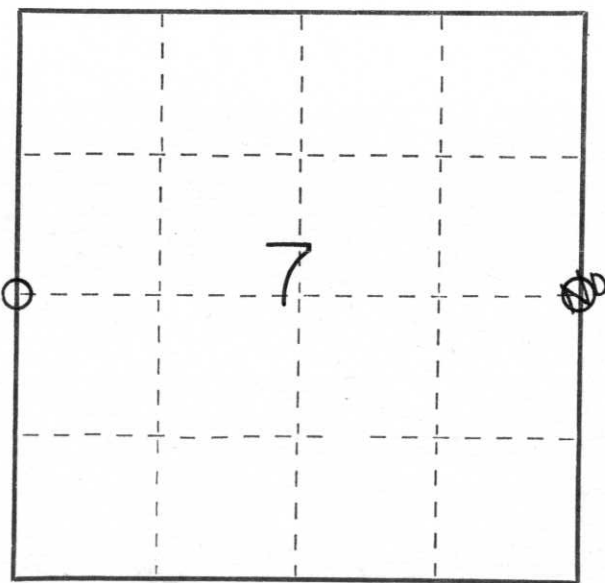
Description of corner evidence found:

Dug with backhoe and found base of 8"x 8" granite stone in place 3 feet below road surface. Placed 1" iron pipe over top of stone. Took ties to PK nails in Marathon County plaques on blazed trees.

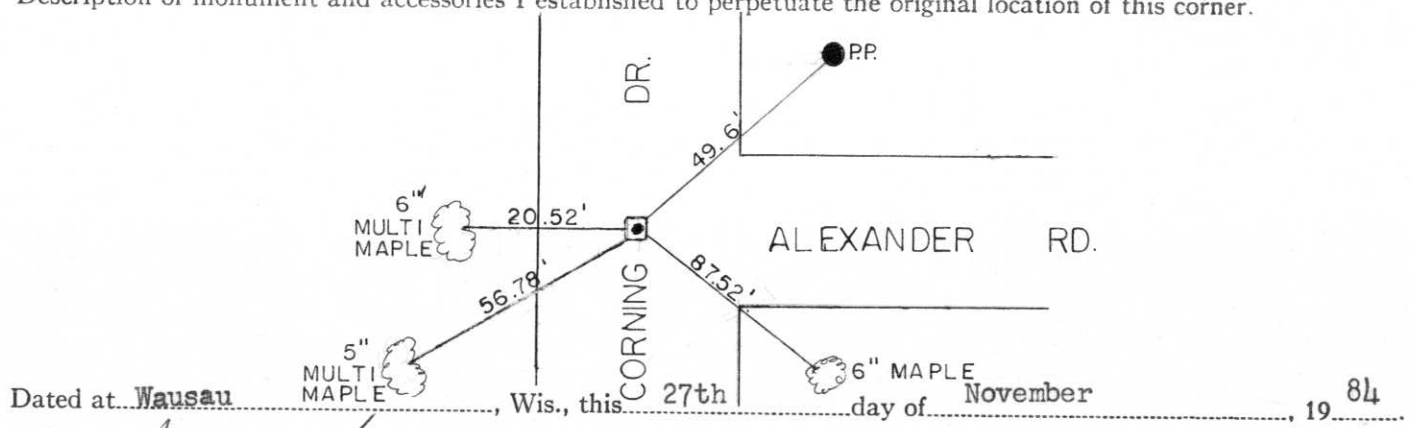
Resident witnesses:

.....
.....
.....

Description of monument and accessories I established to perpetuate the original location of this corner.



○ = Corner monument restored.



Dated at Wausau, Wis., this 27th day of November, 1984

Signature Gary R. Krueger Title Registered Land Surveyor Registration No. S1619
(County Surveyor, Registered Land Surveyor, or other duly authorized official)

Office of Register of Deeds, County of....., I hereby certify that the within instrument was filed in this office for record on the..... day of....., 19..... at..... o'clock..... M.

.....
(Register of Deeds)

By..... Deputy