

# LINCOLN COUNTY U.S. PUBLIC LAND TIE SHEET RECORD

SECTION 12  
TOWNSHIP 31N  
RANGE 5 E

123154  
NO.

**CORNING**  
CITY, VILLAGE, TOWN

LANDMARK

CORNER INDENTITY: MAG NAIL

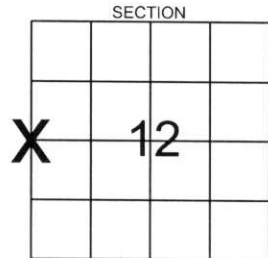
LINCOLN COUNTY COORDINATE: N: 124316.0700

E: 359321.7500

DATE OF SURVEY: May 24, 2006

SURVEY PARTY: Rutzen/Dahlvig

- FOUND
- SET
- RE-SET
- RE-TIED



Description of monument found at this corner and if was accepted, state all evidence (material, testimonial, occupational, plats, records, other monuments) used as a basis for accepting. If not accepted or if nothing was found, state evidence used as basis for establishing location. If reestablished through lost corner proportionate methods, indicate all monuments, distances and directions used to establish.

## BASIS FOR MONUMENT LOCATION:

(DESCRIBE METHOD OF SURVEY AND CONER AUTHENTICATION)

Found mag nail in pavement, mag nail called for in CSM #975



RECEIVED BY LINCOLN COUNTY  
SURVEYOR THIS 12<sup>TH</sup> DAY  
OF June 20 06  
Tony Dalk  
COUNTY SURVEYOR

CERTIFIED CORRECT:

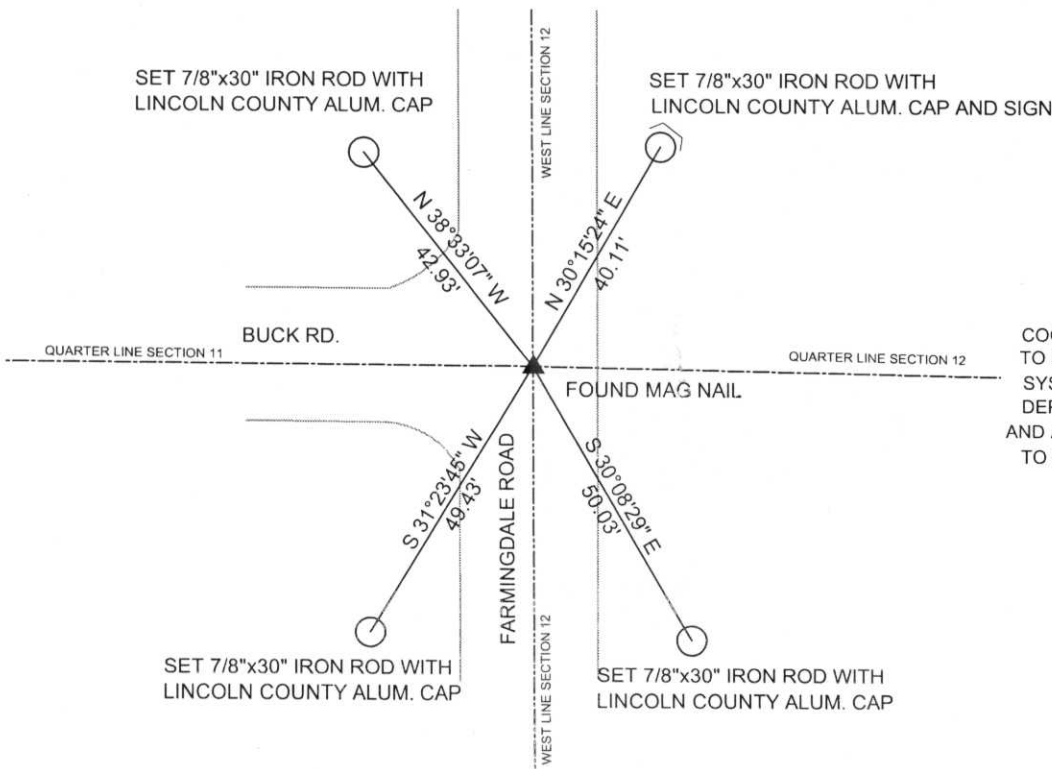
Ronald Jacobson  
Registered Land Surveyor  
RLS 2059-008

COMPANY Central Wisconsin Engineers & Architects

DATE: June 6, 2006

## TIE SKETCH:

SHOW MINIMUM OF FOUR (4) HORIZONTAL TIE DISTANCES TO FIXED WITNESS MONUMENTS.  
DESCRIBE ALL MONUMENTS FOUND OR SET. ALL DISTANCES SHOWN IN US SURVEY FEET.



COORDINATES ARE REFERENCED TO LINCOLN COUNTY COORDINATE SYSTEM AS DEVELOPED BY THE WI. DEPARTMENT OF TRANSPORTATION AND ARE BASED ON GPS OBSERVATIONS TO CONTROL POINTS AS SUPPLIED BY LINCOLN COUNTY.



NOT TO SCALE  
BEARINGS REFERENCED TO LINCOLN COUNTY COORDINATE SYSTEM

9-21











