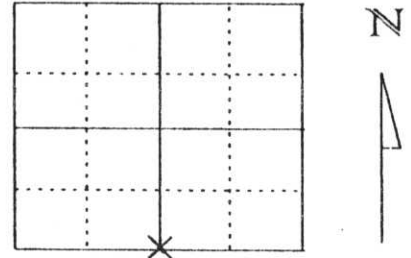


U.S. PUBLIC LAND SURVEY MONUMENT RECORD

Note: This form is intended and designed to fulfill all requirements of Wisconsin Administrative Code, Chapter A-E 5.02, U.S. Public Land Survey Monument Record (3) (a) (b) (c) (d) (e) (f) (g) (h) (l). An additional sheet may be added if necessary to conform with said requirements.

(a) Corner location: Township 31 North
 Range 5 East
 Town/City/Village CORNING EAST
 County Lincoln

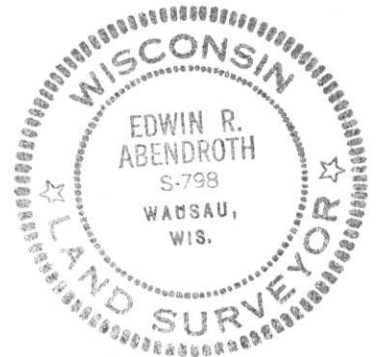


Section 10

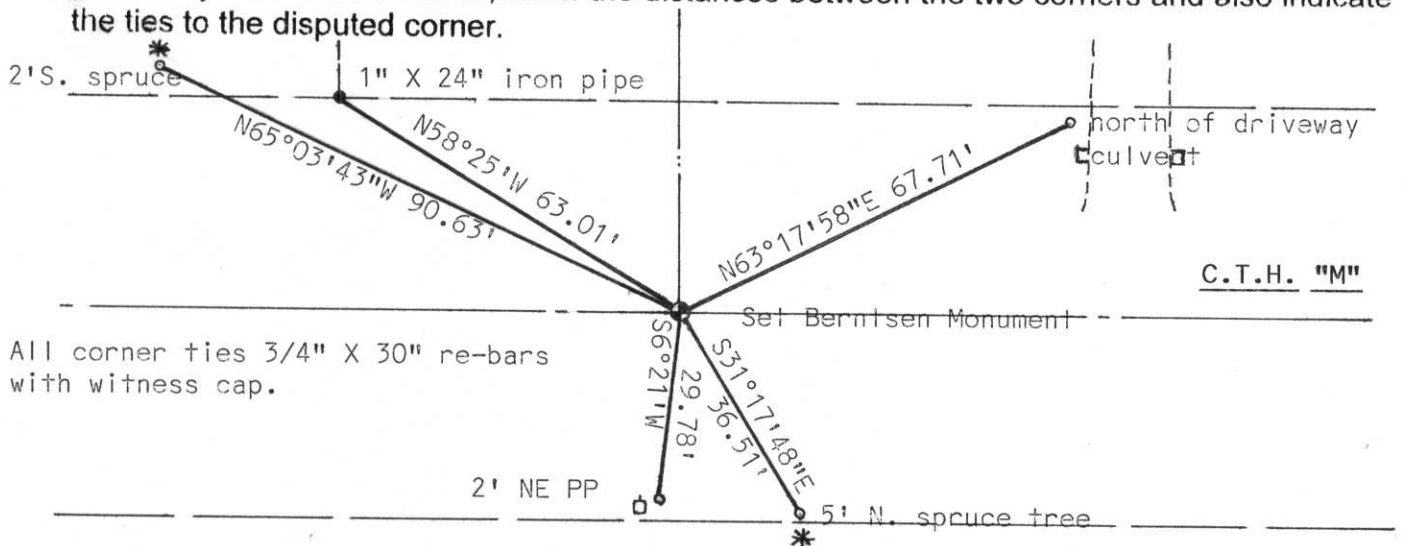
(b) (f) (g) (h) Description of monument found at this corner and if it was accepted, state all evidence (material, testimonial, occupational, plats, records, other monuments) used as a basis for accepting. If not accepted or if nothing was found, state evidence used as basis for establishing location. If reestablished through lost corner proportionate methods, indicate all monuments, distances and directions used to establish.

Dug with Lincoln County Hwy Dept. backhole. Found no evidence of corner or accessories. Set corner by single proportionate measurement between SW and SE Section corner locations. As verification extended fence line from north, corner fit favorably with fence line. Included in traverse and accepted as correct.

**RECEIVED AT LINCOLN COUNTY
 COURTHOUSE THIS 31st DAY
 OF Dec. 19 98
Pat Puibe
LAND INFORMATION OFFICE**



(c) (d) (e) Plan view of corner with ties to at least 4 witness monuments. If in disagreement with previously established corner, show the distances between the two corners and also indicate the ties to the disputed corner.



All corner ties 3/4" X 30" re-bars with witness cap.

(l) I, Edwin R. Abendroth RLS No. S-798
 (type or print name) certify that the corner location on this record was determined by me or under my direction and control and that this U.S. Public Land Survey Monument Record is correct and complete to the best of my knowledge and belief.

Edwin R. Abendroth December 2, 1998
 Signature Date

Index No. I-15