

CERTIFIED LAND CORNER RESTORATION

Index No. I-7

State of Wisconsin }
County of Lincoln } ss.

History of original corner establishment:
Original wood post by government surveyor

I Sheridan D. Schwark, do hereby certify that on the 30th day of July, 1982, I found evidence of the South one-quarter corner of Section 8 Township 31, North, Range 5 East, Fourth, Principal Meridian, as described hereon; and that from this evidence I established a new monument and accessories as described hereon to perpetuate the original location of this corner.

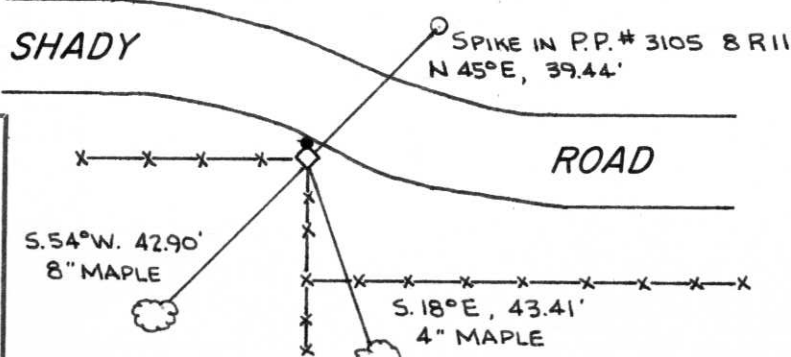
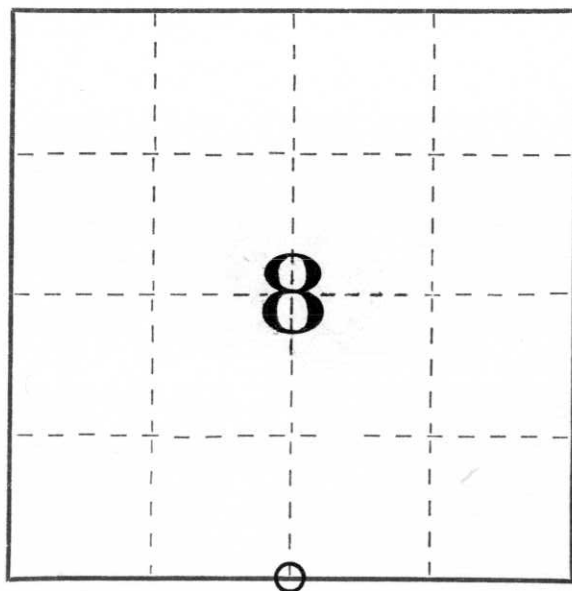
Resident witnesses:

Louis Langhoff

Description of corner evidence found:

We found a 7" x 7" red granite monument which was tipped northeasterly. Mr. Louis Langhoff (Former Town Chairman of the Town of Corning) told us that the monument was in its original position, he said it tipped when a road grader had hooked it and busted several inches of the top off. The monument had enough length left even being broken off therefore we reset it, placed a 1" x 24" iron rod on the north edge of it and established the references as shown below.

Description of monument and accessories I established to perpetuate the original location of this corner.



Dated at Merrill, Wis., this 4th day of August, 1982.

Signature Sheridan D. Schwark Title Registered Land Surveyor Registration No. 1205
(County Surveyor, Registered Land Surveyor, or other duly authorized official)

Office of Register of Deeds, County of _____, I hereby certify that the within instrument was filed in this office for record on the _____ day of _____, 19____ at _____ o'clock _____ M.

(Register of Deeds)

By _____ Deputy

○ = Corner monument restored.