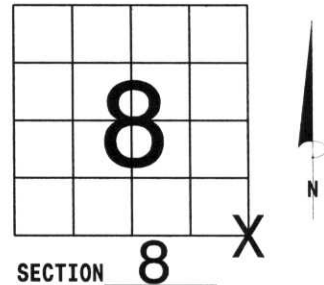


# U.S. PUBLIC LAND SURVEY MONUMENT RECORD

NOTE: THIS FORM IS INTENDED AND DESIGNED TO FULFILL ALL REQUIREMENTS OF WISCONSIN ADMINISTRATIVE CODE, CHAPTER LAND SURVEY MONUMENT RECORD (3) (a) (b) (c) (d) (e) (f) (g) (h) (i). AN ADDITIONAL SHEET MAY BE ADDED IF NECESSARY TO CONFORM WITH SAID REQUIREMENTS. A-E 7.08 U.S. PUBLIC

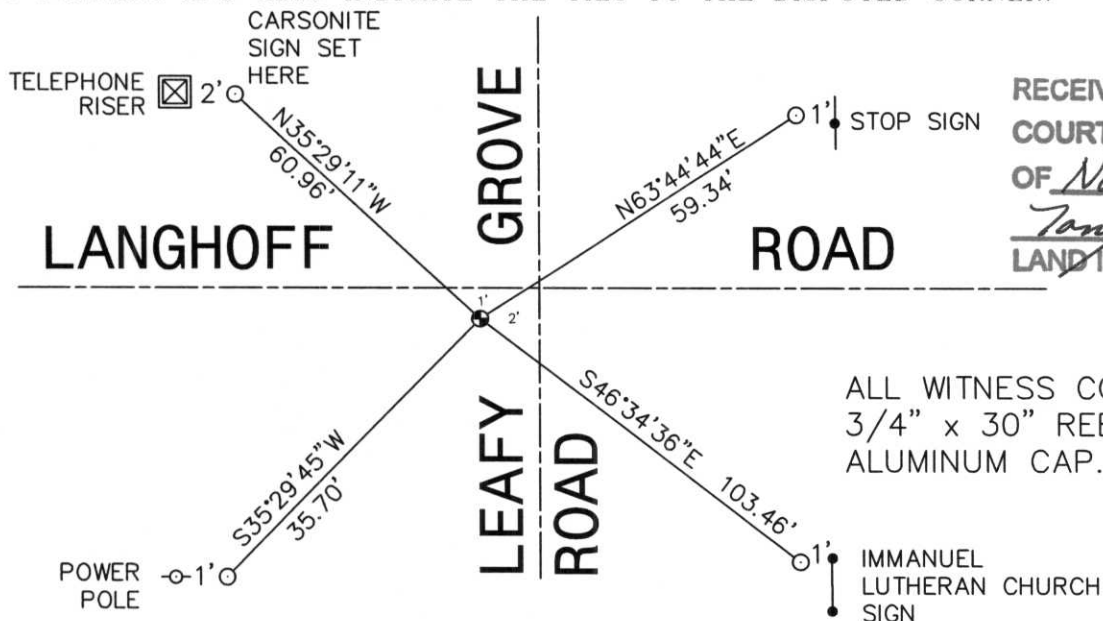
(a) CORNER LOCATION: TOWNSHIP 31 NORTH  
 RANGE 5 EAST/~~WEST~~  
 TOWN/CITY/VILLAGE CORNING  
 COUNTY LINCOLN



(b) (f) (g) (h) DESCRIPTION OF MONUMENT FOUND AT THIS CORNER AND IF IT WAS ACCEPTED, STATE ALL EVIDENCE (MATERIAL, TESTIMONIAL, OCCUPATIONAL, PLATS, RECORDS, OTHER MONUMENTS) USED AS BASIS FOR ACCEPTING. IF NOT ACCEPTED OR IF NOTHING WAS FOUND, STATE EVIDENCE USED AS BASIS FOR ESTABLISHING LOCATION. IF REESTABLISHED THROUGH LOST CORNER PROPORTIONATE METHODS, INDICATE ALL MONUMENTS, DISTANCES AND DIRECTIONS USED TO ESTABLISH. INDICATE TYPE OF MONUMENT FOUND OR SET AND SIGN POST.

ON 10-31-02, WITH THE AID OF THE LINCOLN COUNTY HIGHWAY DEPARTMENTS BACK HOE, WE DUG FOR THIS CORNER. WE DUG THROUGH 3" OF BLACKTOP, 18" OF GRAVEL AND HIT ANOTHER LAYER OF BLACKTOP. I CHECKED WITH MAGNETIC LOCATER FOR ANY PK NAILS, OR RAILROAD SPIKES. DID NOT GET ANY READING. DUG THROUGH BLACKTOP, CAME TO ORIGINAL UNDISTURBED SOIL, HIT 6" x 8" GRANITE STONE. TOP OF STONE WAS ROUGH, HAD BEEN BROKEN OFF. STONE WAS SOLID, AND SITTING STRAIGHT. HELD AS CORNER. SET LINCOLN COUNTY BERNSTEN MONUMENT ON TOP OF STONE. BACK FILLED TO TOP OF MONUMENT. TIED OUT MONUMENT. FINISHED BACK FILLING. TOP OF MONUMENT IS 10" BELOW SURFACE OF BLACKTOP.

(c) (d) (e) PLAN VIEW OF CORNER WITH TIES TO AT LEAST 4 WITNESS MONUMENTS. IF IN DISAGREEMENT WITH PREVIOUSLY ESTABLISHED CORNER, SHOW THE DISTANCES BETWEEN THE TWO CORNERS AND ALSO INDICATE THE TIES TO THE DISPUTED CORNER.



RECEIVED AT LINCOLN COUNTY  
 COURTHOUSE THIS 14<sup>TH</sup> DAY  
 OF November 20 02  
*Tony Dullin*  
 LAND INFORMATION OFFICE

ALL WITNESS CORNERS ARE  
 3/4" x 30" REBAR WITH  
 ALUMINUM CAP.

(i) I, DAVID L. OSTERBRINK RLS NO. S-2014  
 (TYPE OR PRINT NAME) CERTIFY THAT THE CORNER  
 LOCATION ON THIS RECORD WAS DETERMINED BY ME  
 OR UNDER MY DIRECTION AND CONTROL AND THAT  
 THIS U.S. PUBLIC LAND SURVEY MONUMENT RECORD  
 IS CORRECT AND COMPLETE TO THE BEST OF MY  
 KNOWLEDGE AND BELIEF.

*David L. Osterbrink* 11-5-02  
 SIGNATURE DATE



STAMP

L-7











