

CERTIFIED LAND CORNER RESTORATION

Index No. I-5

State of Wisconsin }
County of Lincoln } ss.

History of original corner establishment:
Original wood post set by original government surveyor

I Sheridan D. Schwark, do hereby certify that on the 30th day of July, 1982, I found evidence of the Northeast corner of Section 18 Township 31, North, Range 5 East, Fourth, Principal Meridian, as described hereon; and that from this evidence I established a new monument and accessories as described hereon to perpetuate the original location of this corner.

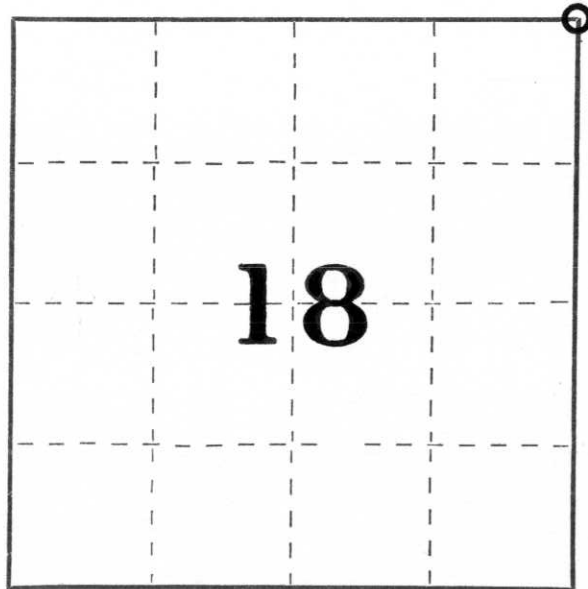
Resident witnesses:

William Behrens

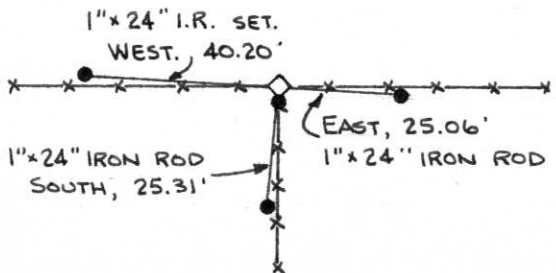
Description of corner evidence found:

Mr. William Behrens (Town of Corning chairman) told us that the monument had been heaved out by frost and it was laying on its side near the corner fence post, he also explained where it originally was in relationship to the corner post. Using this information we recovered the 7" x 7" red granite monument and reset it. We placed a 1" x 24" iron rod at the south edge of the monument and established the references as shown below.

Description of monument and accessories I established to perpetuate the original location of this corner.



○ = Corner monument restored.



Dated at Merrill, Wis., this 4th day of August, 1982

Signature Sheridan D. Schwark Title Registered Land Surveyor Registration No. S-1205
(County Surveyor, Registered Land Surveyor, or other duly authorized official)

Office of Register of Deeds, County of _____, I hereby certify that the within instrument was filed in this office for record on the _____ day of _____, 19____ at _____ o'clock _____ M.

(Register of Deeds)

By _____ Deputy