

# LINCOLN COUNTY U.S. PUBLIC LAND SURVEY MONUMENT LOCATION RECORD

SECTION 4  
TOWNSHIP 31N  
RANGE 5E

C-9  
NO.

LANDMARK       BENCHMARK \_\_\_\_\_  
CORNER IDENTITY: BERNTSEN MONUMENT

FOUND   
SET   
RESET   
RE-TIED

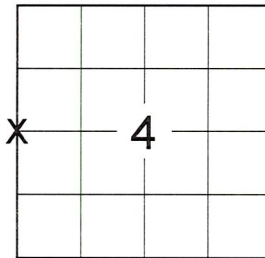
LINCOLN COUNTY COORDINATE: N: \_\_\_\_\_  
E: \_\_\_\_\_  
ELEVATION-(FEET): \_\_\_\_\_ DATUM: \_\_\_\_\_

WEATHER: OVERCAST

DATE OF SURVEY: 11/27/18 TEMPERATURE: 25 °F

SURVEY PARTY: SAM HAUGEN & GUNNER GRENLIE

CORNING  
CITY, VILLAGE, TOWN



LOCATION  
(Indicated By X)



## BASIS FOR MONUMENT LOCATION:

(DESCRIBE METHOD OF SURVEY AND CORNER AUTHENTICATION)

FOUND THE RECORD MONUMENT AND FOUR (4) RECORD TIES ALL TIPPED OVER IN TAG ALDER SWAMP. CONFIRMED THE LINCOLN COUNTY COORDINATES FOR THE WEST 1/4 CORNER AS SHOWN ON THE SECTION SUMMARY FOR SECTION 5 PREPARED BY R.E.I WITH THE ADJOINING SECTION CORNER AT THE SOUTHWEST CORNER OF SECTION 4. HELD COORDINATES FROM ADJOINING SECTION SUMMARY AS BEST AVAILABLE EVIDENCE FOR THE THE CORNER LOCATION. RESET THE BERNTSEN MONUMENT PER LINCOLN COUNTY COORDINATES AND PERPETUATED AS SHOWN BELOW.



FIELD BOOK NO. NA PAGE NO. NA

COMPANY RIVERSIDE LAND SURVEYING LLC

CERTIFIED CORRECT:

*Nathan J. Wincentsen*

NATHAN J. WINCENTSEN S-2539  
Professional Land Surveyor

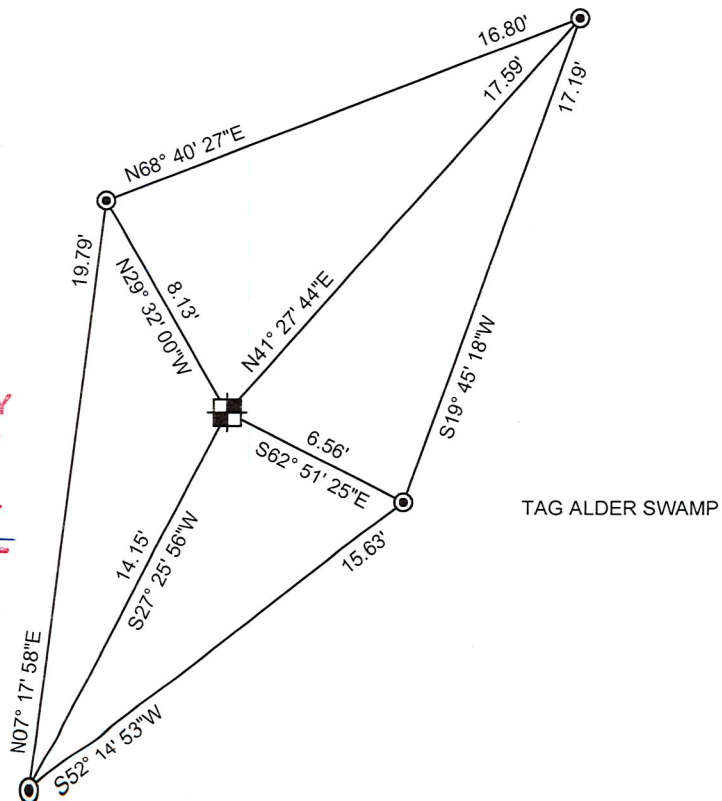
DATE: 12-4-18

## TIE SKETCH:

- BERNTSEN MONUMENT
- RESET 3/4" REBAR

TAG ALDER SWAMP

RECEIVED BY LINCOLN COUNTY  
SURVEYOR THIS 18<sup>TH</sup> DAY  
OF December 20 18  
*Tony Dahl*  
COUNTY SURVEYOR



BEARINGS ARE BASED ON THE LINCOLN COUNTY COORDINATE SYSTEM NAD 83 (2011) AND REFERENCED AS SHOWN

THIS DRAWING IS NOT TO SCALE

C-9  
NO.

# U.S. PUBLIC LAND SURVEY MONUMENT RECORD

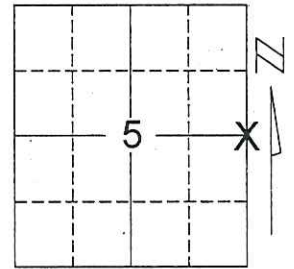
Note: This form is intended and designed to fulfill all requirements of Wisconsin Administrative Code, Chapter A-E 7.08, U.S. Public Land Survey Monument Record (3)(a)(b)(c)(d)(e)(f)(g)(h)(i). An additional sheet may be added if necessary to conform with said requirements.

(a) Corner location: Township 31 North

Range 5 East

Town/City/Village CORNING

County LINCOLN

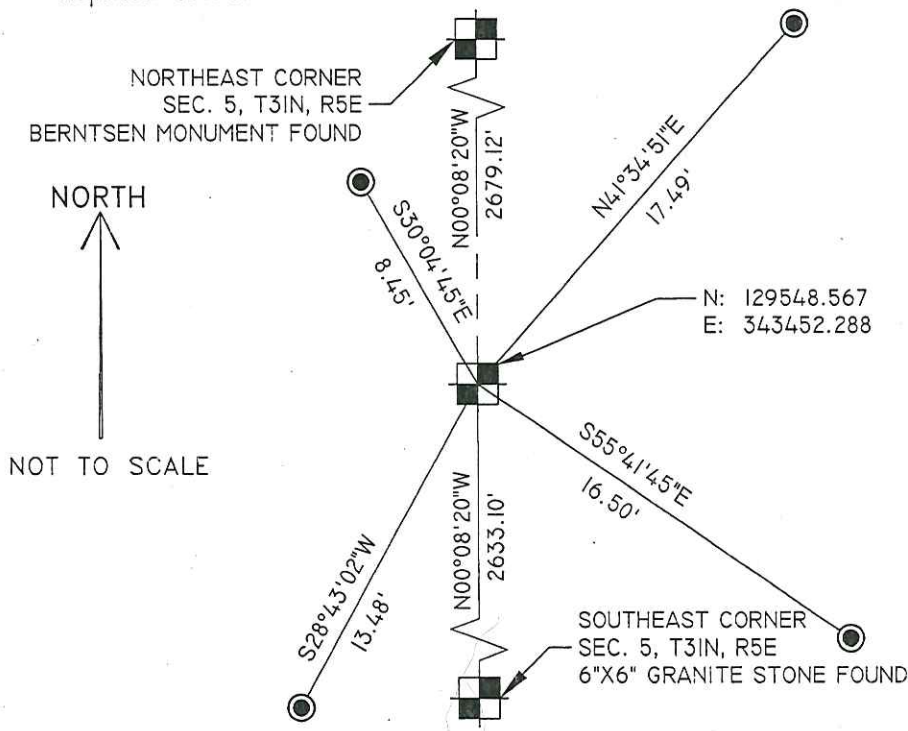


Section 5

(b)(f)(g)(h) Description of monument found at this corner and if it was accepted, state all evidence (material, testimonial, occupational, plats, records, other monuments) used as a basis for accepting. If not accepted or if nothing was found, state evidence used as basis for establishing location. If reestablished through lost corner proportionate methods, indicate all monuments, distances and directions used to establish.

IN AUGUST OF 2006, RON JACOBSON MONUMENTED THE EAST 1/4 CORNER OF SECTION 5. I FOUND THE BERNTSEN MONUMENT AND ALL FOUR TIES INTACT IN A SWAMPY AREA. I MEASURED BETWEEN THE NORTHEAST CORNER AND THE SOUTHEAST CORNER OF SECTION 5 AND FOUND THAT THE EAST CORNER WAS SET AT EQUIDISTANCE AND NOT AT A PROPORTIONATE MEASUREMENT AS SHOWN ON THE P.L.S.S. TIE SHEET. THIS ERROR WAS BROUGHT TO THE ATTENTION OF RON JACOBSON AND THE COUNTY SURVEYOR AND IT WAS AGREED UPON TO MOVE THE EXISTING MONUMENT TO THE CORRECT LOCATION USING PROPORTIONATE MEASUREMENT. NEW TIES WERE SET.

(c)(d)(e) Plan view of corner with ties to at least 4 witness monuments. If in disagreement with previously established corner, show the distances between the two corners and also indicate the ties to the disputed corner.



BEARINGS ARE BASED ON THE LINCOLN COUNTY COORDINATE SYSTEM NAD 83 (2007) AND ARE REFERENCED TO THE EAST LINE OF THE FRACTIONAL NORTHEAST 1/4 MEASURED TO BEAR N00°08'20\"/>

RECEIVED BY LINCOLN COUNTY SURVEYOR THIS 28<sup>TH</sup> DAY OF February, 2013  
*Tracy Daulton*  
 COUNTY SURVEYOR

● - 3/4 IN. X 24 IN. REBAR SET



Index No. C-9

(i) I, Joshua W. Prentice, RLS S-2852, certify that the corner location on this record was determined by me or under my direction and control and that this U.S. Public Land Survey Monument Record is correct and complete to the best of my knowledge and belief.

Signature *Joshua W. Prentice* Date 2-27-2013

# LINCOLN COUNTY U.S. PUBLIC LAND TIE SHEET RECORD

SECTION 4  
TOWNSHIP 31N  
RANGE 5 E

43154  
NO.

**CORNING**  
CITY, VILLAGE, TOWN

LANDMARK

CORNER INDENTITY: LINCOLN COUNTY BERNSTEN

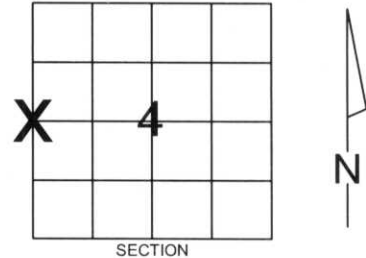
LINCOLN COUNTY COORDINATE: N: 129571.6395

E: 343452.3964

DATE OF SURVEY: July 19, 2006

SURVEY PARTY: Rutzen/Jacobson

FOUND   
SET   
RE-SET   
RE-TIED



Description of monument found at this corner and if was accepted, state all evidence (material, testimonial, occupational, plats, records, other monuments) used as a basis for accepting. If not accepted or if nothing was found, state evidence used as basis for establishing location. If reestablished through lost corner proportionate methods, indicate all monuments, distances and directions used to establish.

## BASIS FOR MONUMENT LOCATION:

(DESCRIBE METHOD OF SURVEY AND CONER AUTHENTICATION)

No evidence discovered in the field, monument was set based on single proportionate measurement.



CERTIFIED CORRECT:

*Ronald Jacobson*

Ronald Jacobson RLS 2059-008

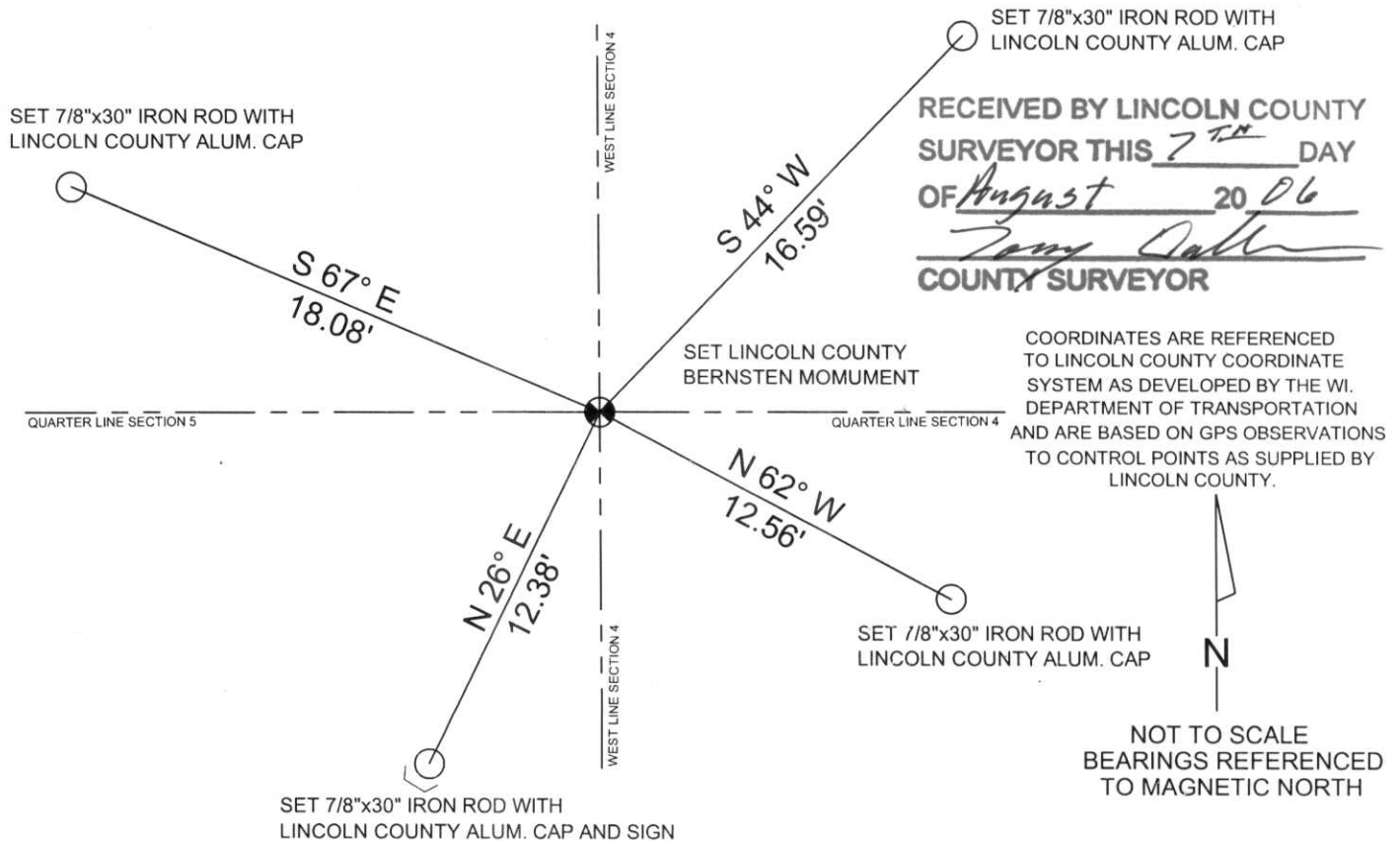
Registered Land Surveyor

DATE: August 4, 2006

COMPANY: Central Wisconsin Engineers & Architects  
5707 Schofield Ave.  
Weston, Wisconsin 54476  
(715) 359-3400

## TIE SKETCH:

SHOW MINIMUM OF FOUR (4) HORIZONTAL TIE DISTANCES TO FIXED WITNESS MONUMENTS.  
DESCRIBE ALL MONUMENTS FOUND OR SET. ALL DISTANCES SHOWN IN US SURVEY FEET.



RECEIVED BY LINCOLN COUNTY  
SURVEYOR THIS 7<sup>TH</sup> DAY  
OF August 20 06  
*Tony Dalko*  
COUNTY SURVEYOR

NOT TO SCALE  
BEARINGS REFERENCED  
TO MAGNETIC NORTH









