

# LINCOLN COUNTY U.S. PUBLIC LAND SURVEY MONUMENT LOCATION RECORD

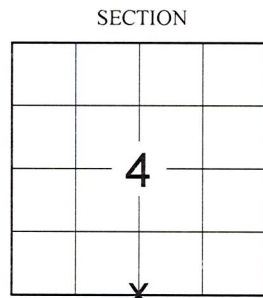
SECTION 4  
 TOWNSHIP 31N  
 RANGE 5E

E-11  
 NO.

LANDMARK       BENCHMARK  
 CORNER IDENTITY: 7" X 7" GRANITE MONUMENT  
 FOUND  SET   
 RESET  RE-TIED

CORNING  
 CITY, VILLAGE, TOWN

LINCOLN COUNTY COORDINATE: N: \_\_\_\_\_  
 E: \_\_\_\_\_



SECTION  
 LOCATION (Indicated By X)

ELEVATION-(FEET): \_\_\_\_\_ DATUM: \_\_\_\_\_

WEATHER: OVERCAST

DATE OF SURVEY: 11/28/18 TEMPERATURE: 25 °F

SURVEY PARTY: SAM HAUGEN & GUNNER GRENLIE

**BASIS FOR MONUMENT LOCATION:**  
 (DESCRIBE METHOD OF SURVEY AND CORNER AUTHENTICATION)

FOUND THE RECORD STONE WITH A 3/4" REBAR PLACED ALONG THE NORTH FACE OF THE MONUMENT AT THE CORNER LOCATION. THE STONE AND REBAR APPEARED TO HAVE BEEN DISTURBED. THE COORDINATES SUPPLIED BY LINCOLN COUNTY PLACED THE LOCATION AT THE SOUTHEAST CORNER OF THE DISTURBED STONE. FOUND ALL FOUR (4) REMAINING TIES BUT THE RECORD DISTANCES TO THE STONE DID NOT FIT THE SUPPLIED COORDINATES OR MATCH THE FOUND STONE. THE LOCATION PER THE SUPPLIED COORDINATES DID HOWEVER MATCH THE DISTANCE TO THE ADJOINING SECTION CORNER TO THE WEST PER THE SUBDIVISION OF SECTION SECTION 9. HELD SUPPLIED COORDINATES AS BEST AVAILABLE EVIDENCE FOR CORNER LOCATION. STONE AND REBAR WERE NOT ADJUSTED TO THE COORDINATE LOCATION DUE TO FROST CONDITIONS IN THE ROAD. PERPETUATED CORNER AS SHOWN BELOW.

FIELD BOOK NO. NA PAGE NO. NA

COMPANY RIVERSIDE LAND SURVEYING LLC

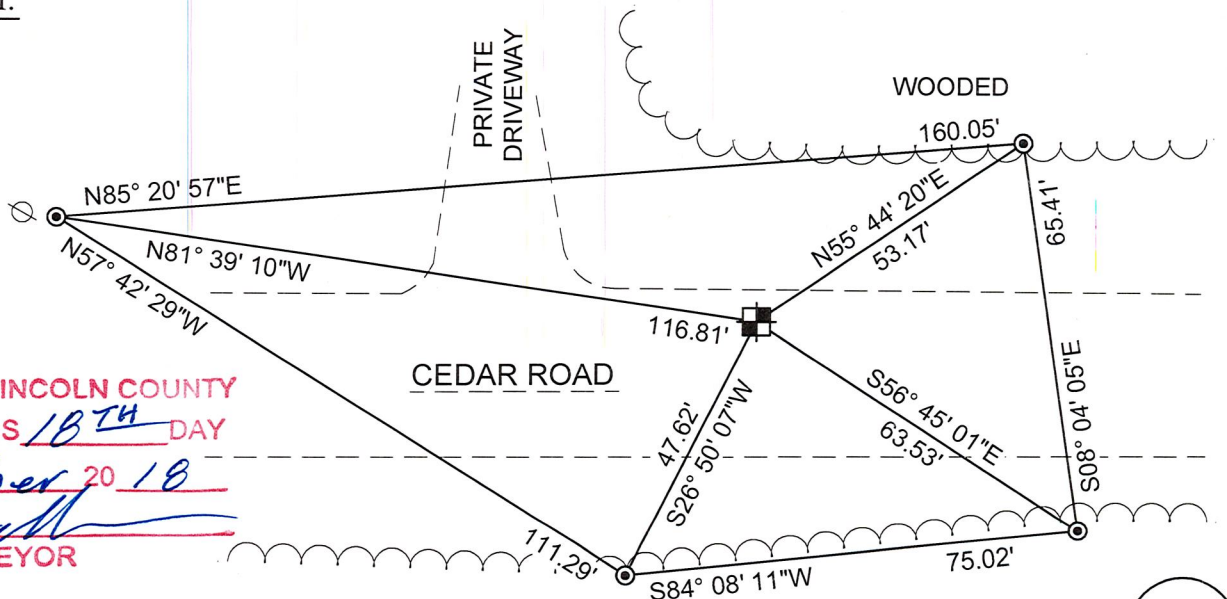
CERTIFIED CORRECT:

*Nathan J. Wincentesen*  
 NATHAN J. WINCENTSEN S-2539  
 Professional Land Surveyor

DATE: 12-4-18



**TIE SKETCH:**



RECEIVED BY LINCOLN COUNTY SURVEYOR THIS 18<sup>TH</sup> DAY OF December 20 18  
*Zany Dahl*  
 COUNTY SURVEYOR

- 7" X 7" GRANITE MONUMENT
- FOUND 3/4" REBAR WITH LINCOLN COUNTY ALUM CAP
- EXISTING UTILITY POLE

E-11  
 NO.

# LINCOLN COUNTY U.S. PUBLIC LAND TIE SHEET RECORD

SECTION 4  
TOWNSHIP 31N  
RANGE 5 E

43157  
NO.

LANDMARK

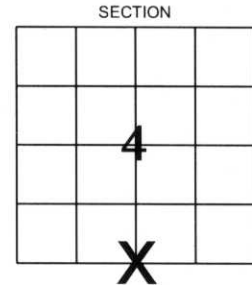
**CORNING**  
OFFY, VILLAGE, TOWN

CORNER INDENTITY: 7" X 7" GRANITE MONUMENT

LINCOLN COUNTY COORDINATE: N: 126929.1040  
E: 346107.1650

DATE OF SURVEY: July 5, 2006  
SURVEY PARTY: Rutzen/Seubert

FOUND   
SET   
RE-SET   
RE-TIED



Description of monument found at this corner and if was accepted, state all evidence (material, testimonial, occupational, plats, records, other monuments) used as a basis for accepting. If not accepted or if nothing was found, state evidence used as basis for establishing location. If reestablished through lost corner proportionate methods, indicate all monuments, distances and directions used to establish.

## BASIS FOR MONUMENT LOCATION:

(DESCRIBE METHOD OF SURVEY AND CONER AUTHENTICATION)

Found 7" X 7" granite monument.



CERTIFIED CORRECT:

*Ronald Jacobson*

Ronald Jacobson RLS 2059-008  
Registered Land Surveyor

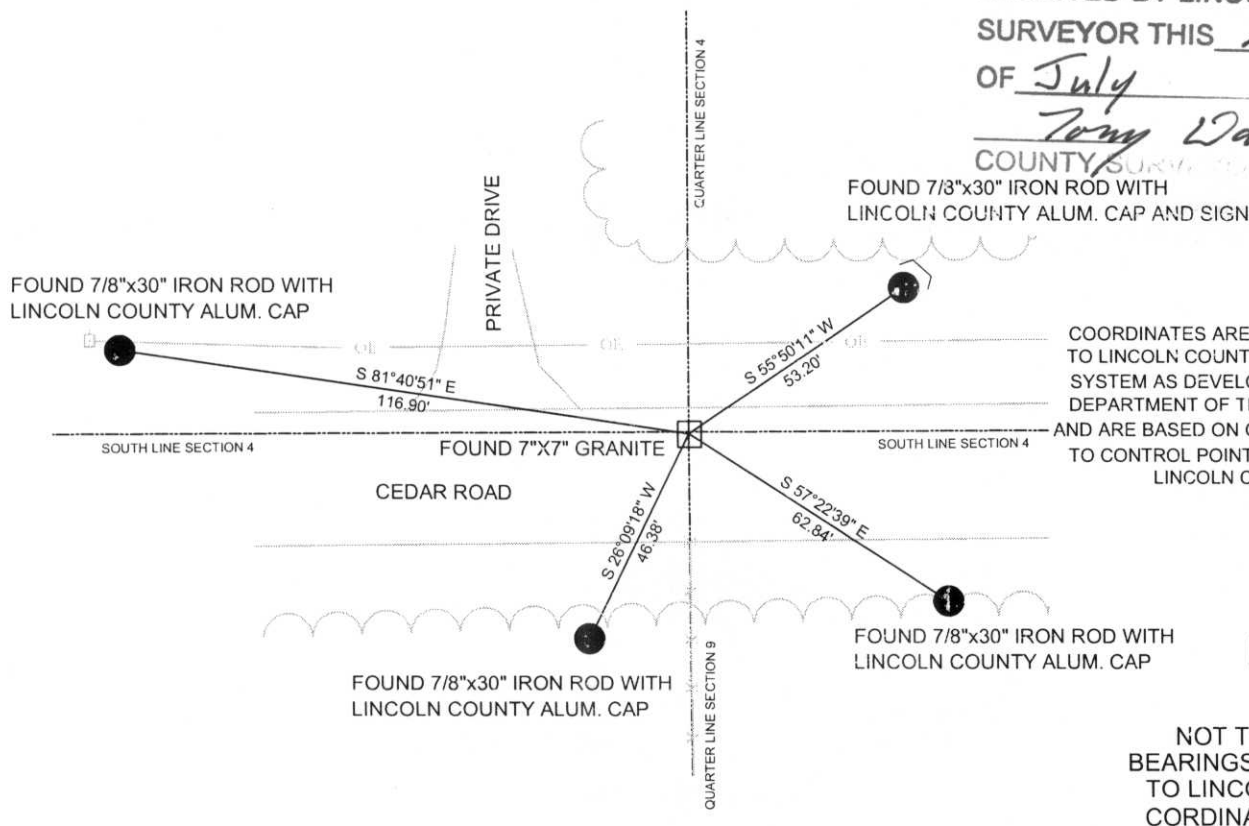
DATE: July 21, 2006

COMPANY: Central Wisconsin Engineers & Architects  
5707 Schofield Ave.  
Weston, Wisconsin 54476  
(715) 359-3400

## TIE SKETCH:

SHOW MINIMUM OF FOUR (4) HORIZONTAL TIE DISTANCES TO FIXED WITNESS MONUMENTS.  
DESCRIBE ALL MONUMENTS FOUND OR SET. ALL DISTANCES SHOWN IN US SURVEY FEET.

RECEIVED BY LINCOLN COUNTY  
SURVEYOR THIS 21<sup>ST</sup> DAY  
OF July 20 06  
*Tom Wall*  
COUNTY SURVEYOR



COORDINATES ARE REFERENCED TO LINCOLN COUNTY COORDINATE SYSTEM AS DEVELOPED BY THE WI. DEPARTMENT OF TRANSPORTATION AND ARE BASED ON GPS OBSERVATIONS TO CONTROL POINTS AS SUPPLIED BY LINCOLN COUNTY.

NOT TO SCALE  
BEARINGS REFERENCED TO LINCOLN COUNTY COORDINATE SYSTEM

E-11

# LINCOLN COUNTY U.S. PUBLIC LAND TIE SHEET RECORD

SECTION 4  
TOWNSHIP 31N  
RANGE 5 E

43157  
NO.

LANDMARK

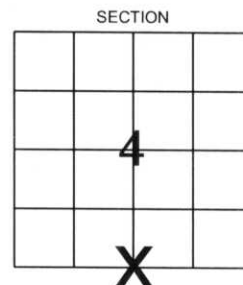
**CORNING**  
CITY, VILLAGE, TOWN

CORNER INDENTITY: 7" X 7" GRANITE MONUMENT

LINCOLN COUNTY COORDINATE: N: 126929.1040  
E: 346107.1650

DATE OF SURVEY: July 5, 2006  
SURVEY PARTY: Rutzen/Seubert

FOUND   
SET   
RE-SET   
RE-TIED



Description of monument found at this corner and if was accepted, state all evidence (material, testimonial, occupational, plats, records, other monuments) used as a basis for accepting. If not accepted or if nothing was found, state evidence used as basis for establishing location. If reestablished through lost corner proportionate methods, indicate all monuments, distances and directions used to establish.

## BASIS FOR MONUMENT LOCATION:

(DESCRIBE METHOD OF SURVEY AND CONER AUTHENTICATION)

Found 7" X 7" granite monument.



CERTIFIED CORRECT:

*Ronald Jacobson*

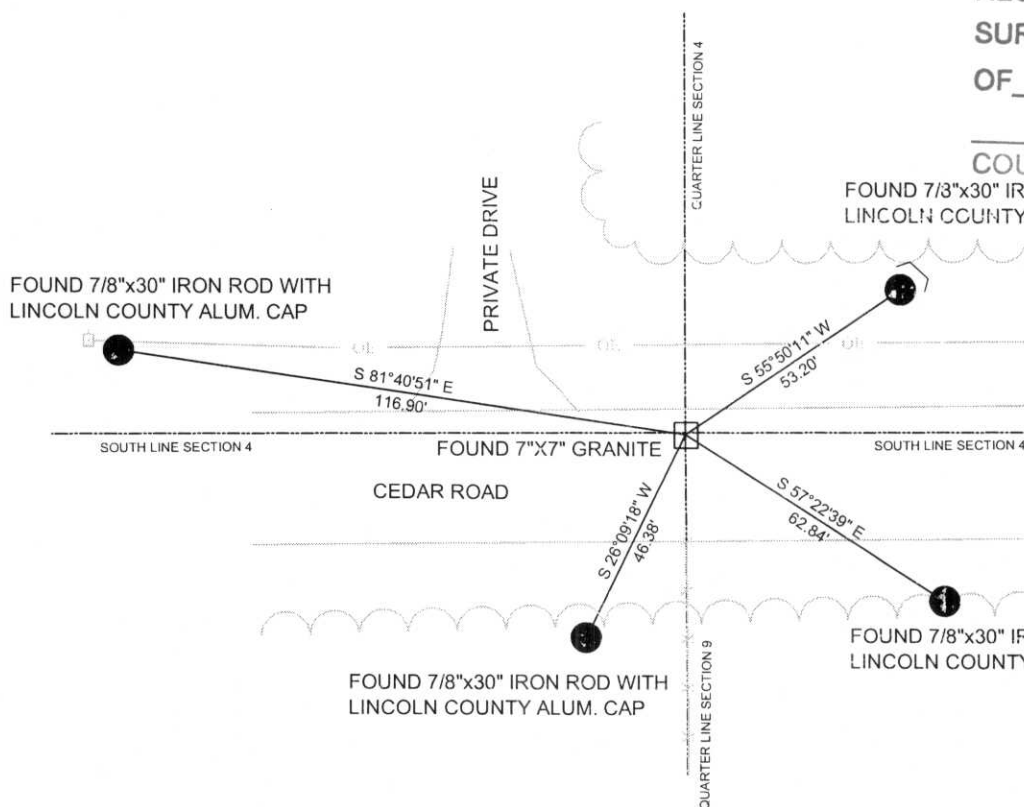
Ronald Jacobson RLS 2059-008  
Registered Land Surveyor

DATE: July 21, 2006

COMPANY: Central Wisconsin Engineers & Architects  
5707 Schofield Ave.  
Weston, Wisconsin 54476  
(715) 359-3400

## TIE SKETCH:

SHOW MINIMUM OF FOUR (4) HORIZONTAL TIE DISTANCES TO FIXED WITNESS MONUMENTS.  
DESCRIBE ALL MONUMENTS FOUND OR SET. ALL DISTANCES SHOWN IN US SURVEY FEET.



RECEIVED BY LINCOLN COUNTY  
SURVEYOR THIS 21<sup>ST</sup> DAY  
OF July 20 06  
*Tom Wall*  
COUNTY SURVEYOR

COORDINATES ARE REFERENCED TO LINCOLN COUNTY COORDINATE SYSTEM AS DEVELOPED BY THE WI. DEPARTMENT OF TRANSPORTATION AND ARE BASED ON GPS OBSERVATIONS TO CONTROL POINTS AS SUPPLIED BY LINCOLN COUNTY.

NOT TO SCALE  
BEARINGS REFERENCED TO LINCOLN COUNTY COORDINATE SYSTEM

11-7

















