

U.S. PUBLIC LAND SURVEY MONUMENT RECORD

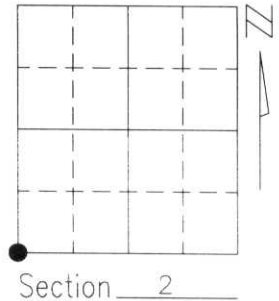
Note: This form is intended and designed to fulfill all requirements of Wisconsin Administrative Code, Chapter A-E 5.02, U.S. Public Land Survey Monument Record (3)(a)(b)(c)(d)(e)(f)(g)(h)(i). An additional sheet may be added if necessary to conform with said requirements.

(a) Corner location: Township 31 North

Range 5 East

Town/City/Village SCOTT

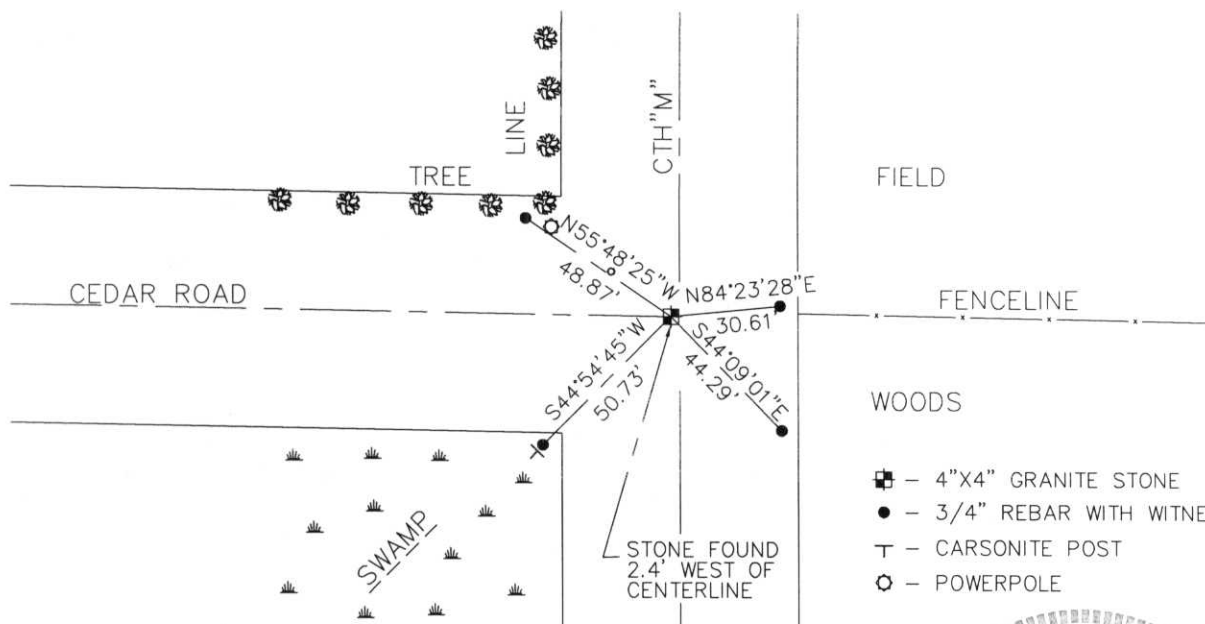
County LINCOLN



(b)(f)(g)(h) Description of monument found at this corner and if it was accepted, state all evidence (material, testimonial, occupational, plats, records, other monuments) used as a basis for accepting. If not accepted or if nothing was found, state evidence used as basis for establishing location. If reestablished through lost corner proportionate methods, indicate all monuments, distances and directions used to establish.

ORIGINAL SURVEY INDICATED CORNER WAS MARKED WITH A GRANITE STONE. WE DUG AT THE INTERSECTION OF THE CENTERLINES OF COUNTY TRUNK HIGHWAY "M" AND CEDAR ROAD, AND THE FENCELINE RUNNING EAST. WE FOUND A 4-INCH BY 4-INCH GRANITE STONE 18 INCHES BELOW THE PAVEMENT. I ACCEPTED THIS STONE AS THE ORIGINAL CORNER MONUMENT. WE PLACED A 1" IRON PIPE IN THE NORTH SIDE OF THE STONE AND TIED OUT ITS LOCATION.

(c)(d)(e) Plan view of corner with ties to at least 4 witness monuments. If in disagreement with previously established corner, show the distances between the two corners and also indicate the ties to the disputed corner.



RECEIVED AT LINCOLN COUNTY COURTHOUSE THIS 27th DAY OF November 2000
Tommy Dalmora
LAND INFORMATION OFFICE

(i) I, DAVID A. RENAUD, RLS S-2142
(type or print name) certify that the corner location on this record was determined by me or under my direction and control and that this U.S. Public Land Survey Monument Record is correct and complete to the best of my knowledge and belief.

David Renaud 6-23-00
Signature Date



Index No. E-17