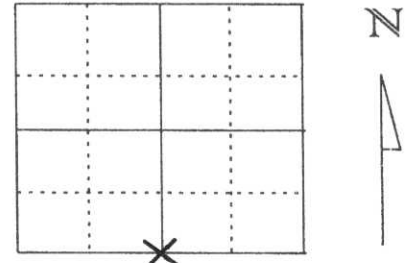


U.S. PUBLIC LAND SURVEY MONUMENT RECORD

Note: This form is intended and designed to fulfill all requirements of Wisconsin Administrative Code, Chapter A-E 5.02, U.S. Public Land Survey Monument Record (3) (a) (b) (c) (d) (e) (f) (g) (h) (l). An additional sheet may be added if necessary to conform with said requirements.

(a) Corner location: Township 31 North
 Range 5 East
 Town/City/Village SCOTT
 County Lincoln



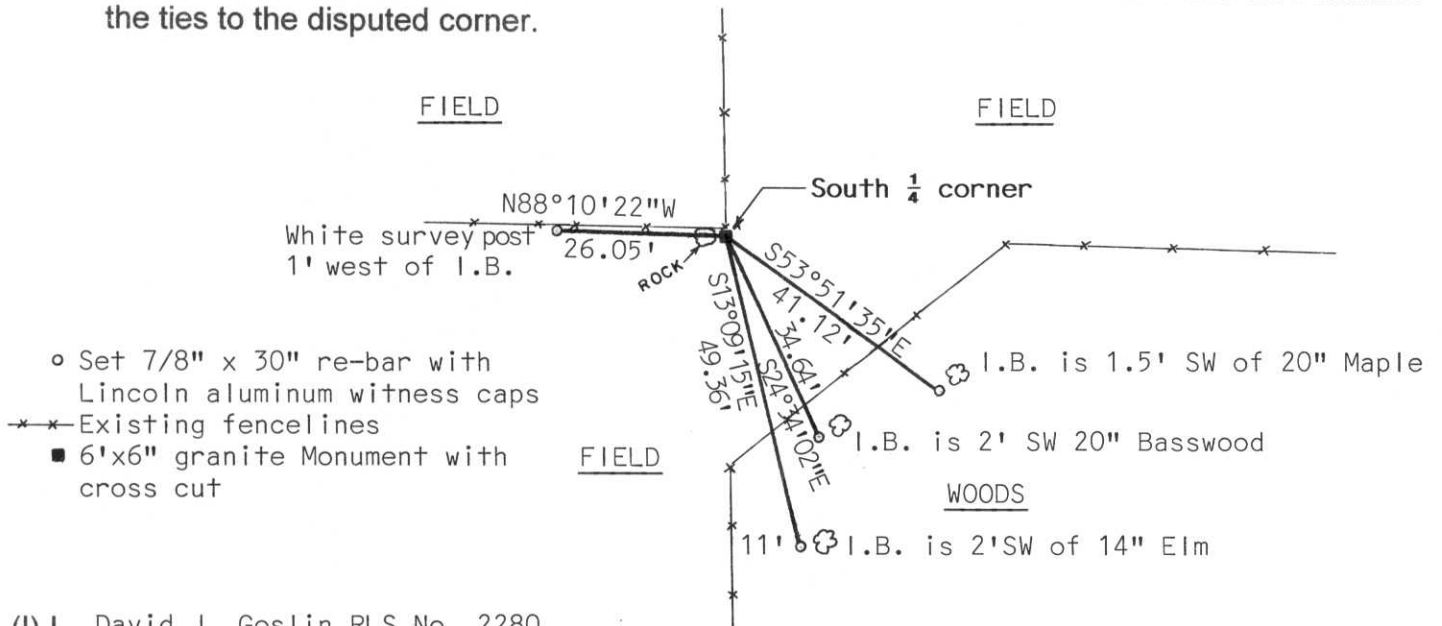
Section 1

(b) (f) (g) (h) Description of monument found at this corner and if it was accepted, state all evidence (material, testimonial, occupational, plats, records, other monuments) used as a basis for accepting. If not accepted or if nothing was found, state evidence used as basis for establishing location. If reestablished through lost corner proportionate methods, indicate all monuments, distances and directions used to establish.

At existing fence corner we looked for a stone monument. Corner was not evident. Talked to land owner Gilbert Krause who stated stone was their but it had tipped over and was buried. He also stated the fence corner was the correct location for the corner. The landowner then dug with a backhoe and found the original Granite Monument. We then set the Monument at the fence corner flush with the ground surface and tied out as shown below.

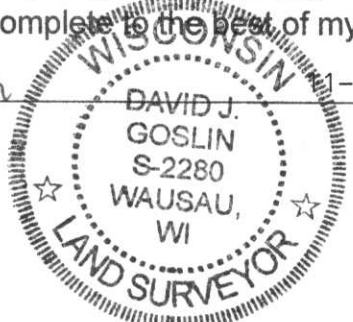
RECEIVED AT LINCOLN COUNTY
 COURTHOUSE THIS 7TH DAY
 OF November 20 00
Tony Dallman
 LAND INFORMATION OFFICE

(c) (d) (e) Plan view of corner with ties to at least 4 witness monuments. If in disagreement with previously established corner, show the distances between the two corners and also indicate the ties to the disputed corner.



(l) I, David J. Goslin RLS No. 2280
 (type or print name) certify that the corner location on this record was determined by me or under my direction and control and that this U.S. Public Land Survey Monument Record is correct and complete to the best of my knowledge and belief.

David J. Goslin
 Signature



11-04-00
 Date