

LINCOLN COUNTY U.S. PUBLIC LAND TIE SHEET RECORD

SECTION 36
TOWNSHIP 31N
RANGE 4 E

363148

LANDMARK

CORNING
CITY, VILLAGE, TOWN

NO.

CORNER INDENTITY: SURVEY NAIL

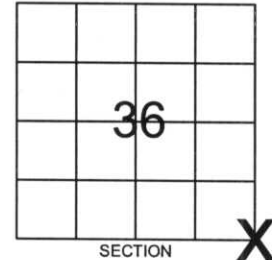
LINCOLN COUNTY COORDINATE: N: 100536.6685

E: 332745.1153

DATE OF SURVEY: August 22, 2006

SURVEY PARTY: Rutzen/Jacobson

FOUND
SET
RE-SET
RE-TIED



Description of monument found at this corner and if was accepted, state all evidence (material, testimonial, occupational, plats, records, other monuments) used as a basis for accepting. If not accepted or if nothing was found, state evidence used as basis for establishing location. If reestablished through lost corner proportionate methods, indicate all monuments, distances and directions used to establish.

BASIS FOR MONUMENT LOCATION:

(DESCRIBE METHOD OF SURVEY AND CONER AUTHENTICATION)

Monument was set based found Marathon County corners, and roadway evidence found in the field.



RECEIVED BY LINCOLN COUNTY
SURVEYOR THIS 29TH DAY
OF September 20 06
Tony D. Ball
COUNTY SURVEYOR

CERTIFIED CORRECT:

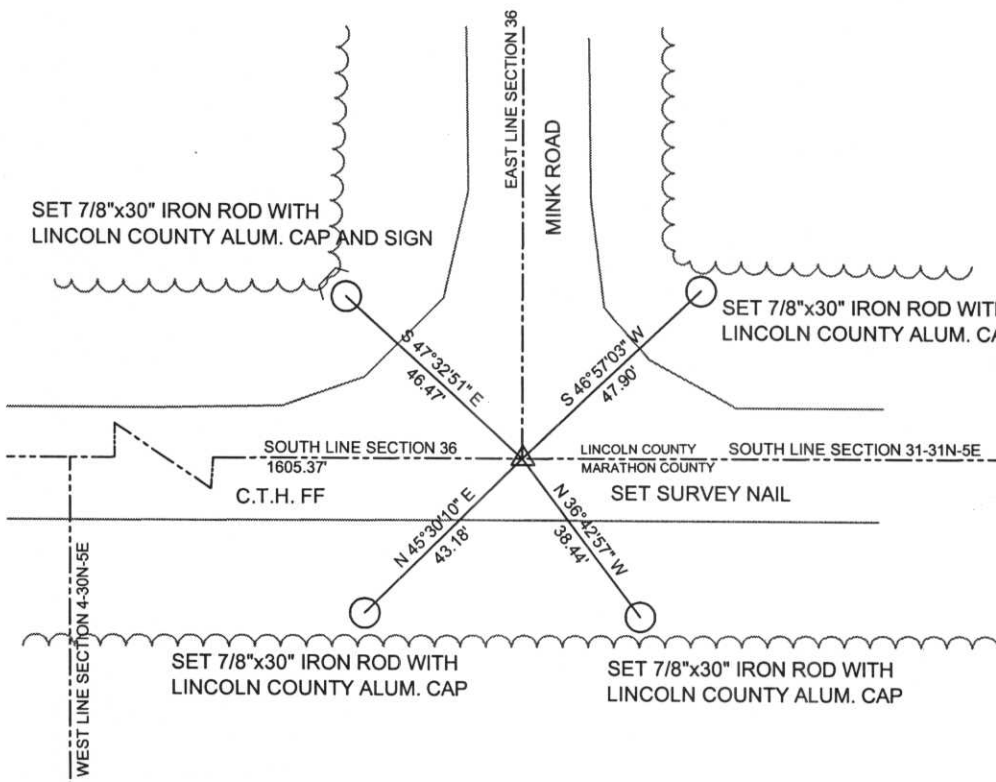
Ronald Jacobson
Ronald Jacobson RLS 2059-008
Registered Land Surveyor

COMPANY: Central Wisconsin Engineers & Architects
5707 Schofield Ave.
Weston, Wisconsin 54476
(715) 359-3400

DATE: September 18, 2006

TIE SKETCH:

SHOW MINIMUM OF FOUR (4) HORIZONTAL TIE DISTANCES TO FIXED WITNESS MONUMENTS.
DESCRIBE ALL MONUMENTS FOUND OR SET. ALL DISTANCES SHOWN IN US SURVEY FEET.



COORDINATES ARE REFERENCED TO LINCOLN COUNTY COORDINATE SYSTEM AS DEVELOPED BY THE WI. DEPARTMENT OF TRANSPORTATION AND ARE BASED ON GPS OBSERVATIONS TO CONTROL POINTS AS SUPPLIED BY LINCOLN COUNTY.

NOT TO SCALE
BEARINGS REFERENCED TO LINCOLN COUNTY COORDINATE SYSTEM