

LINCOLN COUNTY U.S. PUBLIC LAND TIE SHEET RECORD

SECTION 34
TOWNSHIP 31N
RANGE 4 E

343144

LANDMARK

CORNING
CITY, VILLAGE, TOWN

NO.

CORNER IDENTIVITY: BERNSTEN MONUMENT

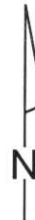
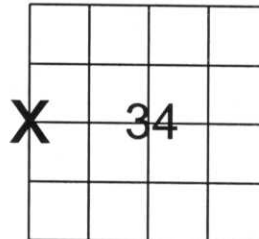
LINCOLN COUNTY COORDINATE: N: 103267.1740

E: 316867.1780

DATE OF SURVEY: October 10, 2006

SURVEY PARTY: Rutzen/Jacobson

FOUND
SET
RE-SET
RE-TIED



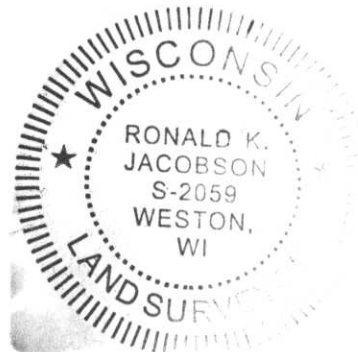
SECTION

Description of monument found at this corner and if was accepted, state all evidence (material, testimonial, occupational, plats, records, other monuments) used as a basis for accepting. If not accepted or if nothing was found, state evidence used as basis for establishing location. If reestablished through lost corner proportionate methods, indicate all monuments, distances and directions used to establish.

BASIS FOR MONUMENT LOCATION:

(DESCRIBE METHOD OF SURVEY AND CORNER AUTHENTICATION)

Monument was set based on found broken stone monument. Stone was replaced with a Lincoln County Bernsten Monument.



CERTIFIED CORRECT:

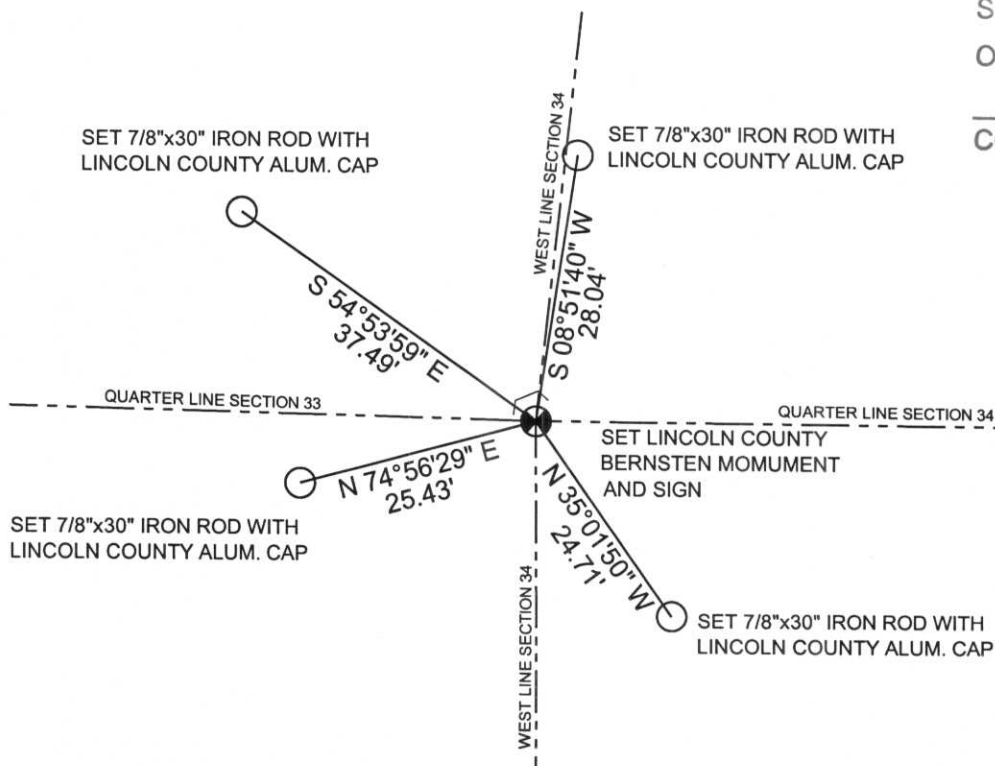
Ronald Jacobson
Ronald Jacobson RLS 2059-008
Registered Land Surveyor

DATE: October, 27, 2006

COMPANY: Central Wisconsin Engineers & Architects
5707 Schofield Ave.
Weston, Wisconsin 54476
(715) 359-9400

TIE SKETCH:

SHOW MINIMUM OF FOUR (4) HORIZONTAL TIE DISTANCES TO FIXED WITNESS MONUMENTS.
DESCRIBE ALL MONUMENTS FOUND OR SET. ALL DISTANCES SHOWN IN US SURVEY FEET



RECEIVED BY LINCOLN COUNTY
SURVEYOR THIS 31st DAY
OF October, 2006
Tommy Duth
COUNTY SURVEYOR

COORDINATES ARE REFERENCED TO LINCOLN COUNTY COORDINATE SYSTEM AS DEVELOPED BY THE WI. DEPARTMENT OF TRANSPORTATION AND ARE BASED ON GPS OBSERVATIONS TO CONTROL POINTS AS SUPPLIED BY LINCOLN COUNTY.



NOT TO SCALE
BEARINGS REFERENCED TO LINCOLN COUNTY COORDINATE SYSTEM

WILCOX COUNTY
SURVEY
MARKER
11/17/77















