

U.S. PUBLIC LAND SURVEY MONUMENT RECORD

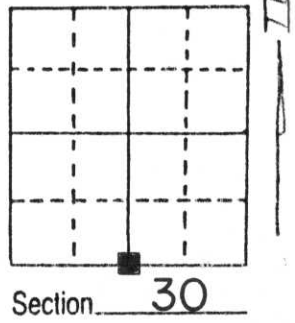
Note: This form is intended and designed to fulfill all requirements of Wisconsin Administrative Code, Chapter A-E 5.02, U.S. Public Land Survey Monument Record (3) (a) (b) (c) (d) (e) (f) (g) (h) (i). An additional sheet may be added if necessary to conform with said requirements.

(a) Corner location: Township 31 North

Range 4 East

Town/City/Village CORNING

County LINCOLN



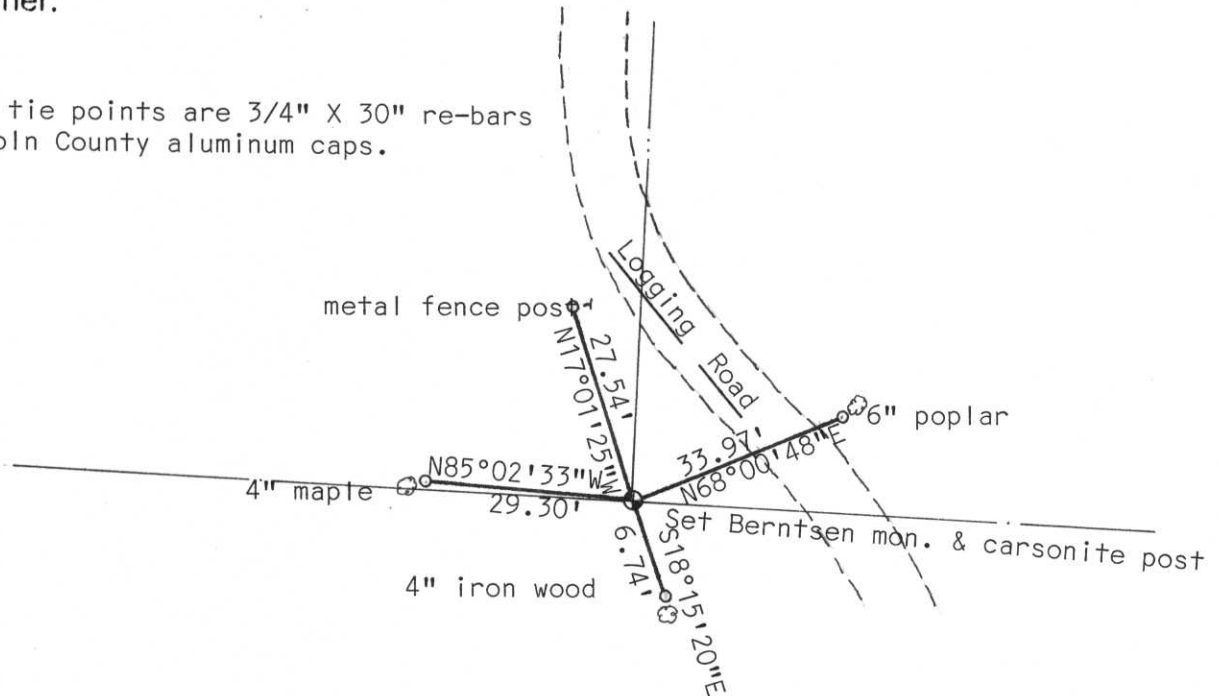
(b) (f) (g) (h) Description of monument found at this corner and if it was accepted, state all evidence (material, testimonial, occupational, plats, records, other monuments) used as a basis for accepting. If not accepted or if nothing was found, state evidence used as basis for establishing location. If reestablished through lost corner proportionate methods, indicate all monuments, distances and directions used to establish.

Continued section traverse to south $\frac{1}{4}$ corner. Searched the calculated location found no evidence of corner or accessory evidence. Set Berntsen monument by single proportionate measurement between southeast and southwest section corners. Corner location verified by local resident Perrodin. Mr. Perridin had heard rumors about the existence of this corner but had never seen the actual corner.

**RECEIVED AT LINCOLN COUNTY
COURTHOUSE THIS 22nd DAY
OF Dec 19 97
Pat Priebe
TAX DESCRIPTION OFFICE**

(c) (d) (e) Plan view of corner with ties to at least 4 witness monuments. If in disagreement with previously established corner, show the distances between the two corners and also indicate the ties to the disputed corner.

Note: All tie points are 3/4" X 30" re-bars with Lincoln County aluminum caps.



(i) I, Edwin R. Abendroth RLS No. S-798
(type or print name) certify that the corner location on this record was determined by me or under my direction and control and that this U.S. Public Land Survey Monument Record is correct and complete to the best of my knowledge and belief.

Edwin Abendroth December 19, 1997
Signature Date



Index No. 4-3