

# U.S. PUBLIC LAND SURVEY MONUMENT RECORD

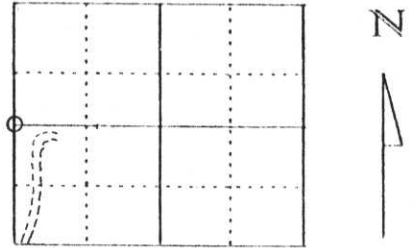
Note: This form is intended and designed to fulfill all requirements of Wisconsin Administrative Code, Chapter A-E 5.02, U.S. Public Land Survey Monument Record (3) (a) (b) (c) (d) (e) (f) (g) (h) (l). An additional sheet may be added if necessary to conform with said requirements.

(a) Corner location: Township 31 North

Range 4 East

Town/City/Village TOWN CORNING

County Lincoln



Section 25

(b) (f) (g) (h) Description of monument found at this corner and if it was accepted, state all evidence (material, testimonial, occupational, plats, records, other monuments) used as a basis for accepting. If not accepted or if nothing was found, state evidence used as basis for establishing location. If reestablished through lost corner proportionate methods, indicate all monuments, distances and directions used to establish.

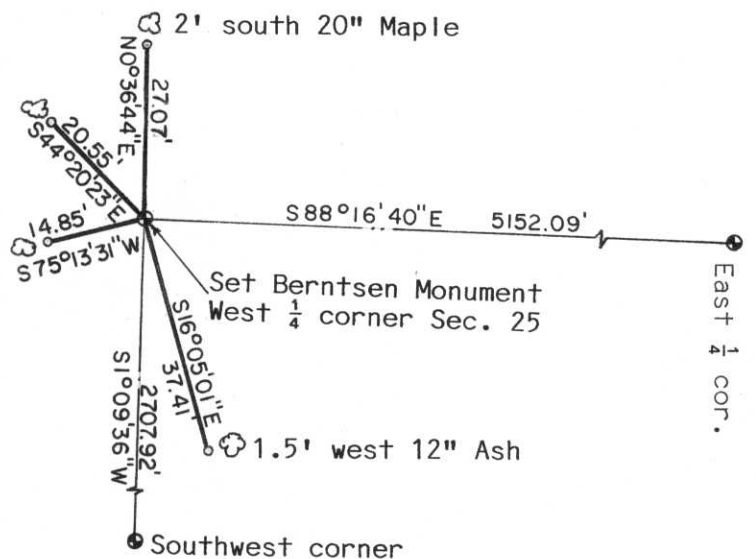
Original corner was wood post set in 1865 by William Daugherty  
 Original ties are as follows:  
 Hemlock 12" N40°E 36 links  
 Elm 12" N60°W 13 links

Traversed into corner location and found existing 2" x 30" iron pipe. Located iron pipe and position was very close to a single proportionate straight-line measurement from the Northwest and Southwest Section corners. Held 2" iron pipe as best evidence of the West 1/4 of Section 25 and replaced 2" with Lincoln County Berntsen Monument set flush with ground. Set 2" iron pipe on Southwest side Berntsen and set orange Carsonite post on Northeast side of Berntsen.

(c) (d) (e) Plan view of corner with ties to at least 4 witness monuments. If in disagreement with previously established corner, show the distances between the two corners and also indicate the ties to the disputed corner.

- Set 7/8" x 30" iron rebar with Lincoln County Aluminum cap
- 2' southeast 14" Maple
- All trees have orange survey sign.

2' east 10" Yellow Birch with old grown over blaze



(l) I, David J. Goslin RLS No. 2280

(type or print name) certify that the corner location on this record was determined by me or under my direction and control and that this U.S. Public Land Survey Monument Record is correct and complete to the best of my knowledge and belief.

David J. Goslin  
 Signature



Date 3-27-00

RECEIVED AT LINCOLN COUNTY COURTHOUSE THIS 28th DAY OF March 2000  
Tony Daltman  
 LAND INFORMATION OFFICE

Index No. 5-21



