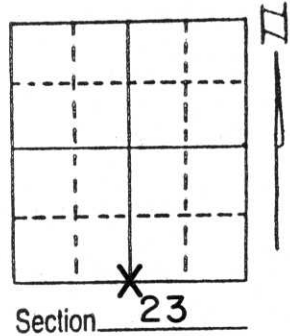


# U.S. PUBLIC LAND SURVEY MONUMENT RECORD

Note: This form is intended and designed to fulfill all requirements of Wisconsin Administrative Code, Chapter A-E 5.02, U.S. Public Land Survey Monument Record (3) (a) (b) (c) (d) (e) (f) (g) (h) (i). An additional sheet may be added if necessary to conform with said requirements.

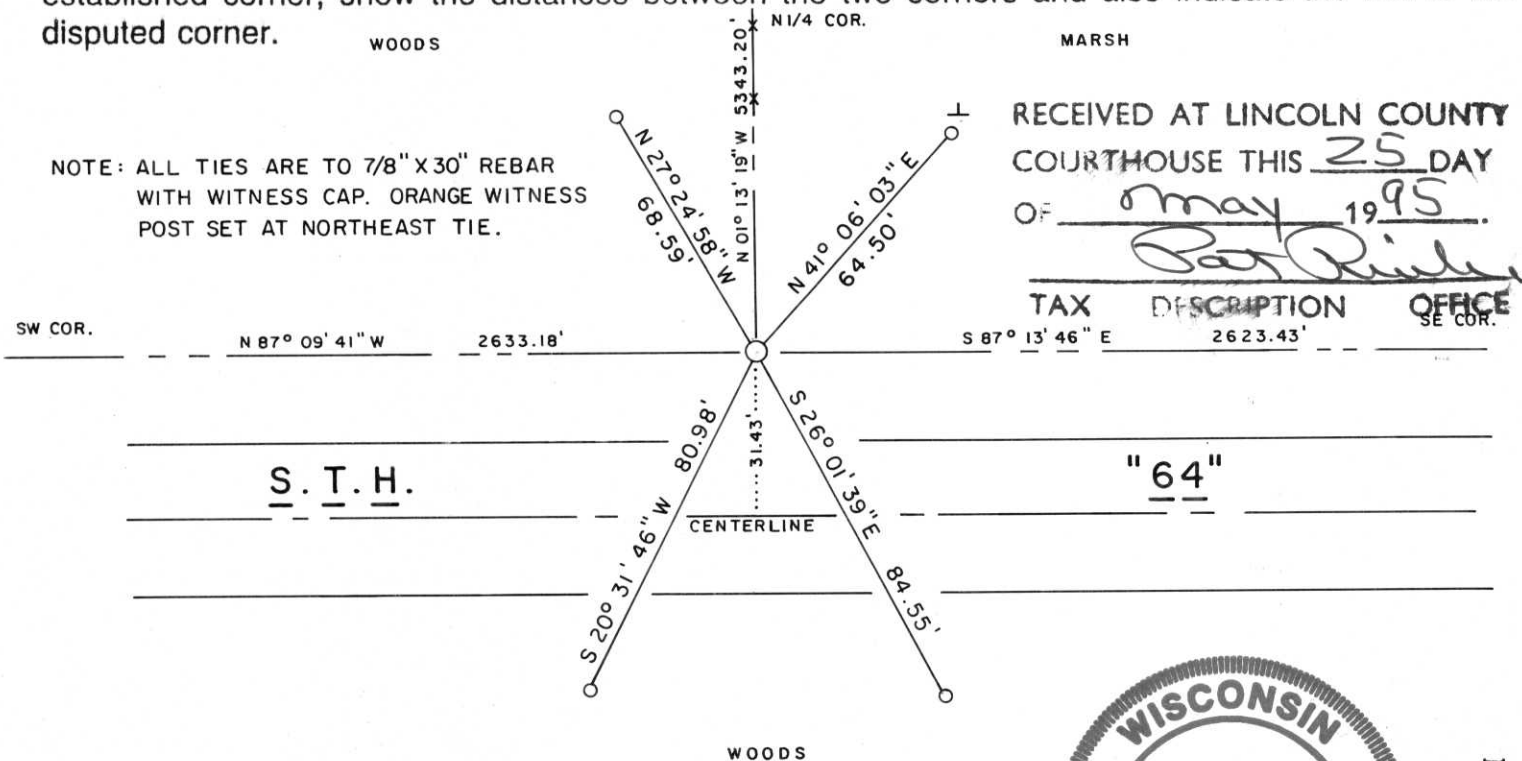
(a) Corner location: Township 31 North  
 Range 4 East  
 Town/City/Village CORNING  
 County LINCOLN



(b) (f) (g) (h) Description of monument found at this corner and if it was accepted, state all evidence (material, testimonial, occupational, plats, records, other monuments) used as a basis for accepting. If not accepted or if nothing was found, state evidence used as basis for establishing location. If reestablished through lost corner proportionate methods, indicate all monuments, distances and directions used to establish.

Original Corner - Wood Post set by W.E. Daugherty, 1851?. No remonumentation notes available.  
 Corner area searched and excavated by personnel from Owen Ayres & Associates in 1979. No corner was found and corner point established at that time by using information garnered from a traverse of Sections 25 and 26 and by accepting an old fence line to North as best evidence of true corner location. The corner point thus established in 1979 was referenced to RR Spikes set in the roadway of S.T.H. "64" which were recovered in April, 1994 and relied upon to establish new corner location. Set a Standard Lincoln County Berntsen Monument at corner point flush with ground surface. A section summary sheet of Section 23 placed on file with Lincoln County Surveyor's Office.

(c) (d) (e) Plan view of corner with ties to at least 4 witness monuments. If in disagreement with previously established corner, show the distances between the two corners and also indicate the ties to the disputed corner.



RECEIVED AT LINCOLN COUNTY COURTHOUSE THIS 25 DAY OF May 1995.  
*Pat Riehl*  
 TAX DESCRIPTION OFFICE  
 SE COR.

(i) I, LAVERNE H. MOSHER  
 (type or print name) certify that the corner location on this record was determined by me or under my direction and control and that this U.S. Public Land Survey Monument Record is correct and complete to the best of my knowledge and belief.



LaVerne H. Mosher Signature  
 MAY 24, 1995 Date

Index No. Q-19





31 2:31 PM



31 2:28 PM