

U.S. PUBLIC LAND SURVEY MONUMENT RECORD

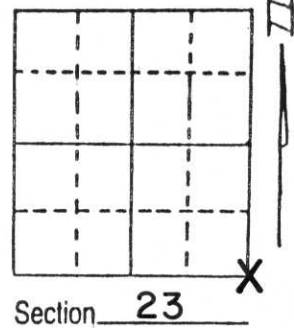
Note: This form is intended and designed to fulfill all requirements of Wisconsin Administrative Code, Chapter A-E 5.02, U.S. Public Land Survey Monument Record (3) (a) (b) (c) (d) (e) (f) (g) (h) (i). An additional sheet may be added if necessary to conform with said requirements.

(a) Corner location: Township 31 North

Range 4 East

Town/City/Village CORNING

County LINCOLN

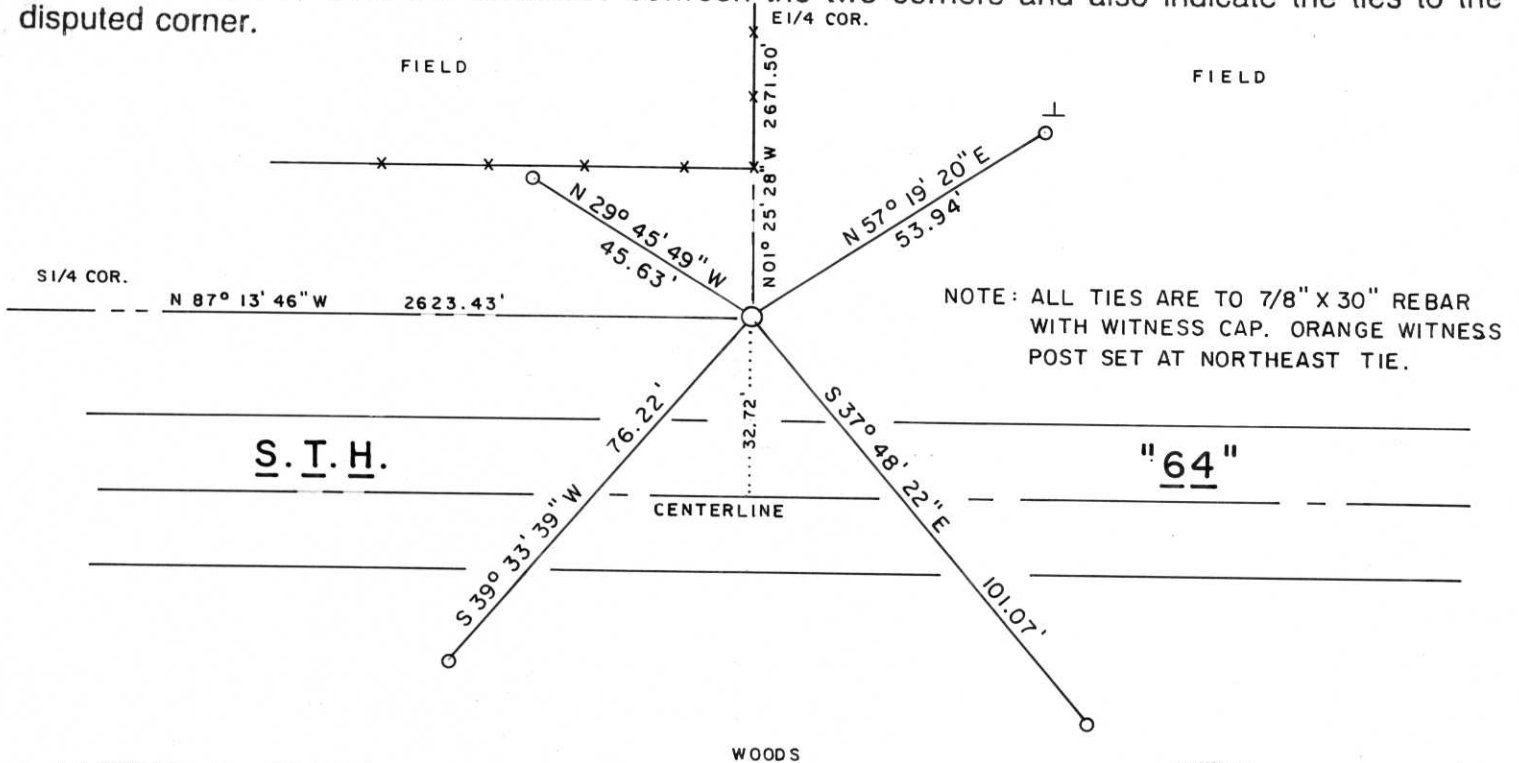


(b) (f) (g) (h) Description of monument found at this corner and if it was accepted, state all evidence (material, testimonial, occupational, plats, records, other monuments) used as a basis for accepting. If not accepted or if nothing was found, state evidence used as basis for establishing location. If reestablished through lost corner proportionate methods, indicate all monuments, distances and directions used to establish.

Original Corner - Wood Post set by W.E. Daugherty, 1851?. No remonumentation notes available.

Corner area searched by personnel from Owen Ayres & Associates in 1979 for a survey of private lands. Corner point was established at that time from data obtained from the S.T.H. "64" R/W plat, an existing fence line running to North and by a traverse of Sections 25 and 26. Reference points to corner had been set in roadway surface and were recovered in April, 1994 and used to establish the corner position. A Standard Lincoln County Berntsen Monument was placed at this corner such that the top is about 1 inch below ground surface. A section summary sheet of Section 23 has been placed on file with the County Surveyor's Office.

(c) (d) (e) Plan view of corner with ties to at least 4 witness monuments. If in disagreement with previously established corner, show the distances between the two corners and also indicate the ties to the disputed corner.



(i) I, LAVERNE H. MOSHER

(type or print name) certify that the corner location on this record was determined by me or under my direction and control and that this U.S. Public Land Survey Monument Record is correct and complete to the best of my knowledge and belief.

Laverne H. Mosher
Signature

MAY 24, 1995
Date

Index No. 9-21

RECEIVED AT LINCOLN COUNTY
CO. HOUSE LHS 25 DAY
OF MAY 1995.

[Signature]
TAX DESCRIPTION OFFICE



31 2:38 PM



31 2:36 PM



31 2:36 PM



31 2:38 PM