

U.S. PUBLIC LAND SURVEY MONUMENT RECORD

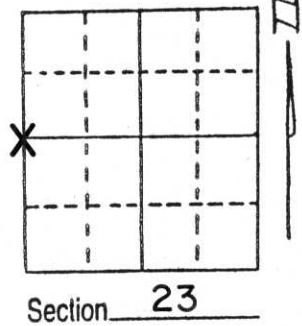
Note: This form is intended and designed to fulfill all requirements of Wisconsin Administrative Code, Chapter A-E 5.02, U.S. Public Land Survey Monument Record (3) (a) (b) (c) (d) (e) (f) (g) (h) (i). An additional sheet may be added if necessary to conform with said requirements.

(a) Corner location: Township 31 North

Range 4 East

Town/Village CORNING

County LINCOLN



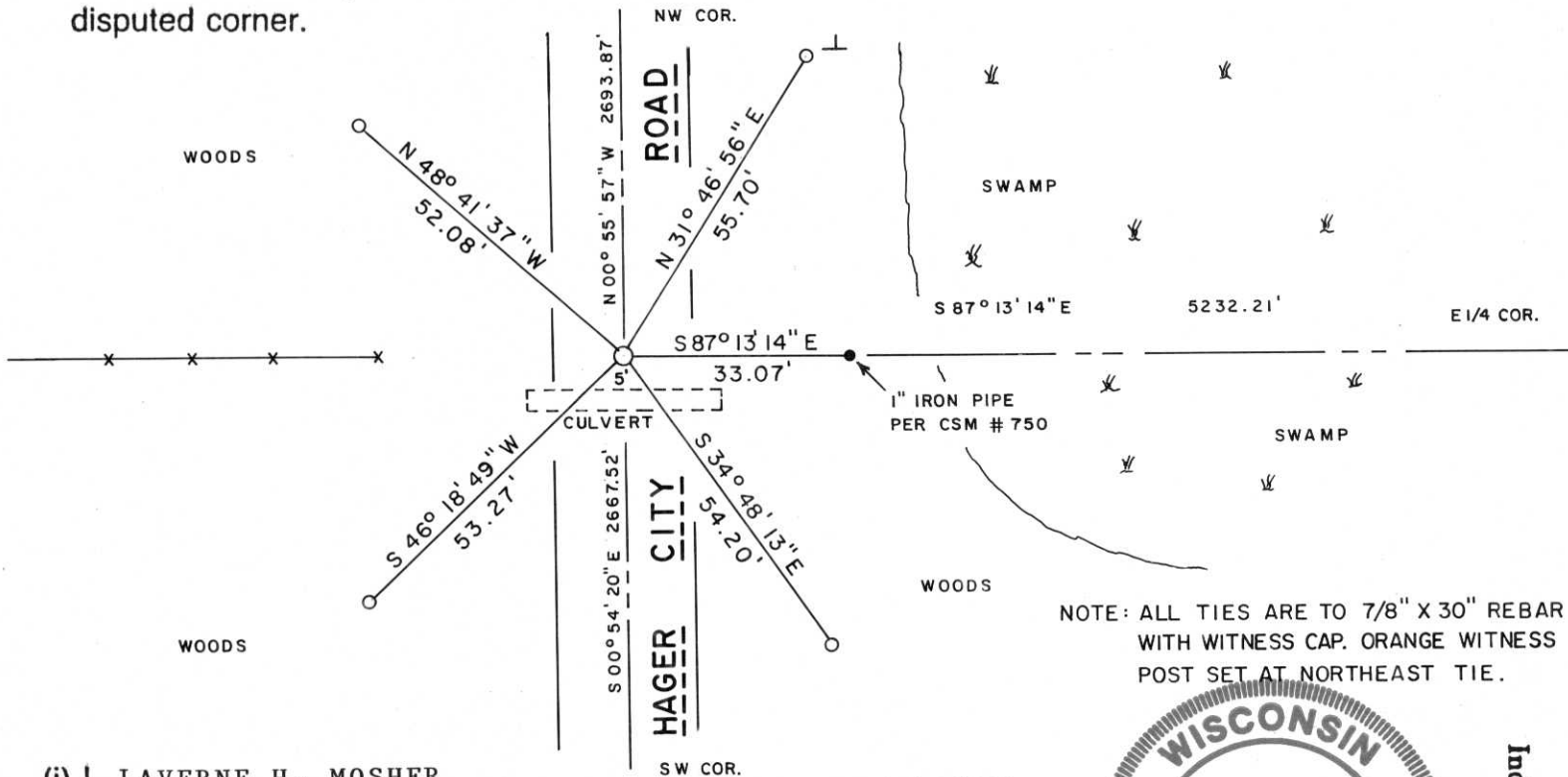
(b) (f) (g) (h) Description of monument found at this corner and if it was accepted, state all evidence (material, testimonial, occupational, plats, records, other monuments) used as a basis for accepting. If not accepted or if nothing was found, state evidence used as basis for establishing location. If reestablished through lost corner proportionate methods, indicate all monuments, distances and directions used to establish.

Original corner - Wood Post set by W.E. Daugherty, 1851?. No remonumentation notes available.

Did not excavate as it appeared that corner evidence would have been destroyed by installation of large metal culvert in roadway. A traverse of Sections 23, 25, 26 and most of Section 24 was performed for private clients. Corner point established at intersection of old fence line to West and road centerline. Set Standard Lincoln County Berntsen Monument at corner and file a section summary of Section 23 with County Surveyor's Office.

RECEIVED AT LINCOLN COUNTY
COURTHOUSE THIS 25 DAY
OF May 1995.
Pat Ruelle
TAX DESCRIPTION OFFICE

(c) (d) (e) Plan view of corner with ties to at least 4 witness monuments. If in disagreement with previously established corner, show the distances between the two corners and also indicate the ties to the disputed corner.



NOTE: ALL TIES ARE TO 7/8" X 30" REBAR WITH WITNESS CAP. ORANGE WITNESS POST SET AT NORTHEAST TIE.

(i) I, LAVERNE H. MOSHER

(type or print name) certify that the corner location on this record was determined by me or under my direction and control and that this U.S. Public Land Survey Monument Record is correct and complete to the best of my knowledge and belief.



Index No. 0-17

LaVerne H. Mosher
Signature

MAY 24, 1995

Date



31 2:05 PM



31 2:06 PM



31 2:05 PM