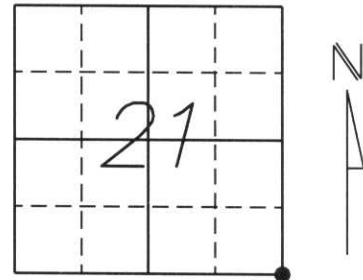


U.S. PUBLIC LAND SURVEY MONUMENT RECORD

Note: This form is intended and designed to fulfill all requirements of Wisconsin Administrative Code, Chapter A-E 5.02, U.S. Public Land Survey Monument Record (3) (a) (b) (c) (d) (e) (f) (g) (h) (i). An additional sheet may be added if necessary to conform with said requirements.

(a) Corner location: Township 31 North
 Range 4 East
 Town/City/Village CORNING
 County Lincoln

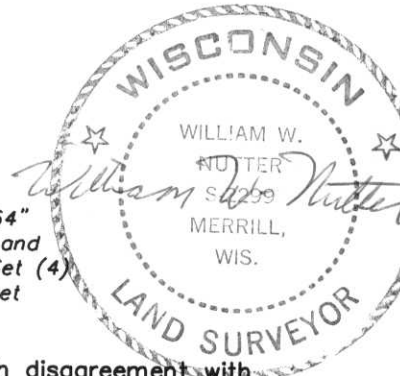


Section 21

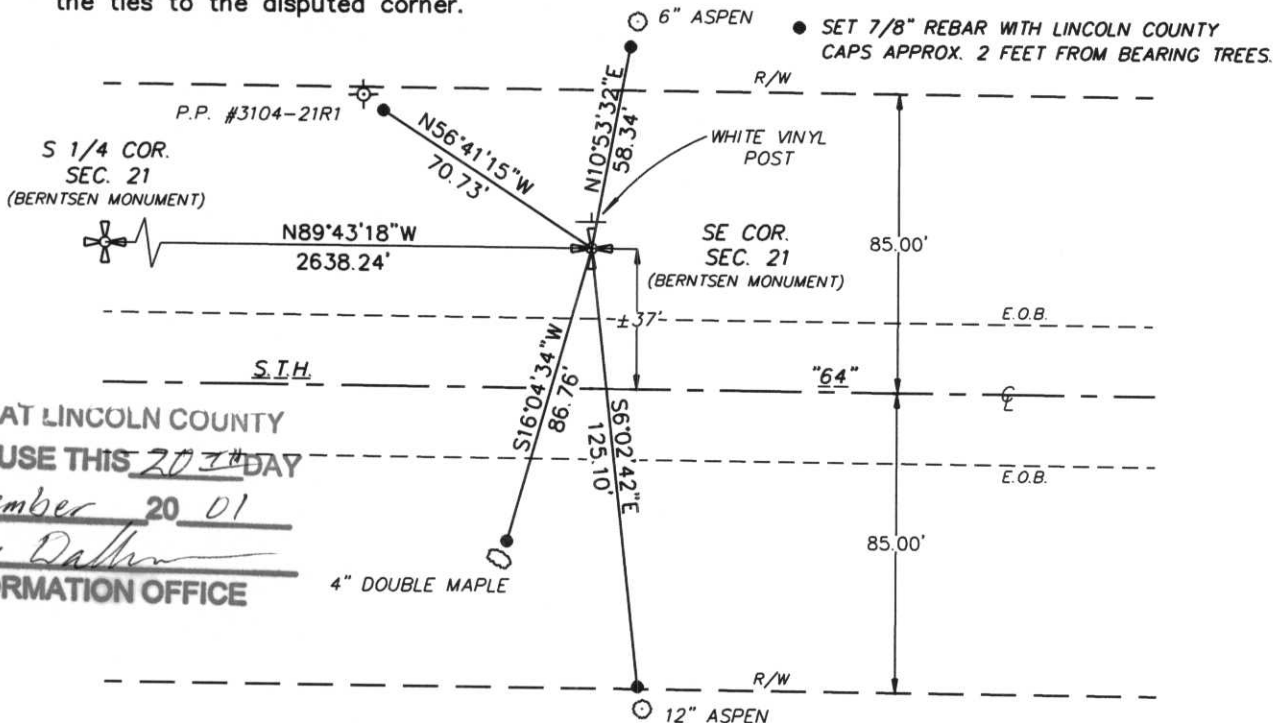
(b) (f) (g) (h) Description of monument found at this corner and if it was accepted, state all evidence (material, testimonial, occupational, plats, records, other monuments) used as a basis for accepting. If not accepted or if nothing was found, state evidence used as a basis for establishing location. If reestablished through lost corner proportionate methods, indicate all monuments, distances and directions used to establish.

Original survey done by William E. Daugherty in Oct., 1861, with bearing trees:
 16" White Pine S69°W, 34 lks
 14" Birch N58°E, 14 lks.

Set Berntsen Monument at intersection of the offset of centerline of S.T.H. "64" at a distance specified on map done by D.O.T. (at SE Cor., distance is ±37'), and a line perpendicular to said offset from a plaque set by American Can Co. Set (4) 7/8" rebars with Lincoln County caps as witness monuments, set approx 2 feet from bearing trees.



(c) (d) (e) Plan view of corner with ties to at least 4 witness monuments. If in disagreement with previously established corner, show the distances between the two corners and also indicate the ties to the disputed corner.



RECEIVED AT LINCOLN COUNTY
 COURTHOUSE THIS 20TH DAY
 OF December 20 01
Tommy Dalko
 LAND INFORMATION OFFICE

(i) I, William W. Nutter RLS, S-2299
 (type or print name) certify that the corner location on this record was determined by me or under my direction and control and that this U.S. Public Land Survey Monument Record is correct and complete to the best of my knowledge and belief.

William W. Nutter, RLS, S-2299 12-19-01
 Signature Date

Index No. 8-13