

# LINCOLN COUNTY U.S. PUBLIC LAND TIE SHEET RECORD

SECTION 29  
TOWNSHIP 31N  
RANGE 4 E

293142  
NO.

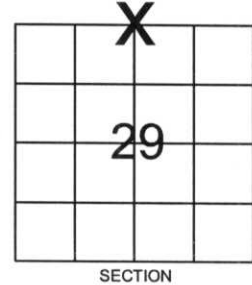
LANDMARK

CORNING  
CITY, VILLAGE, TOWN

CORNER INDENTITY: BERNSTEN MONUMENT

LINCOLN COUNTY COORDINATE: N: 111684.0001  
E: 309159.5249

FOUND   
SET   
RE-SET   
RE-TIED



DATE OF SURVEY: September 19, 2006  
SURVEY PARTY: Rutzen

Description of monument found at this corner and if was accepted, state all evidence (material, testimonial, occupational, plats, records, other monuments) used as a basis for accepting. If not accepted or if nothing was found, state evidence used as basis for establishing location. If reestablished through lost corner proportionate methods, indicate all monuments, distances and directions used to establish.

## BASIS FOR MONUMENT LOCATION:

(DESCRIBE METHOD OF SURVEY AND CORNER AUTHENTICATION)

Monument was set based on evidence found in the field for STH 64 Right-Of-Way and the Right-Of-Way Plat for STH 64.



RECEIVED BY LINCOLN COUNTY  
SURVEYOR THIS 29<sup>TH</sup> DAY  
OF September, 20 06  
Tony Wall  
COUNTY SURVEYOR

CERTIFIED CORRECT:

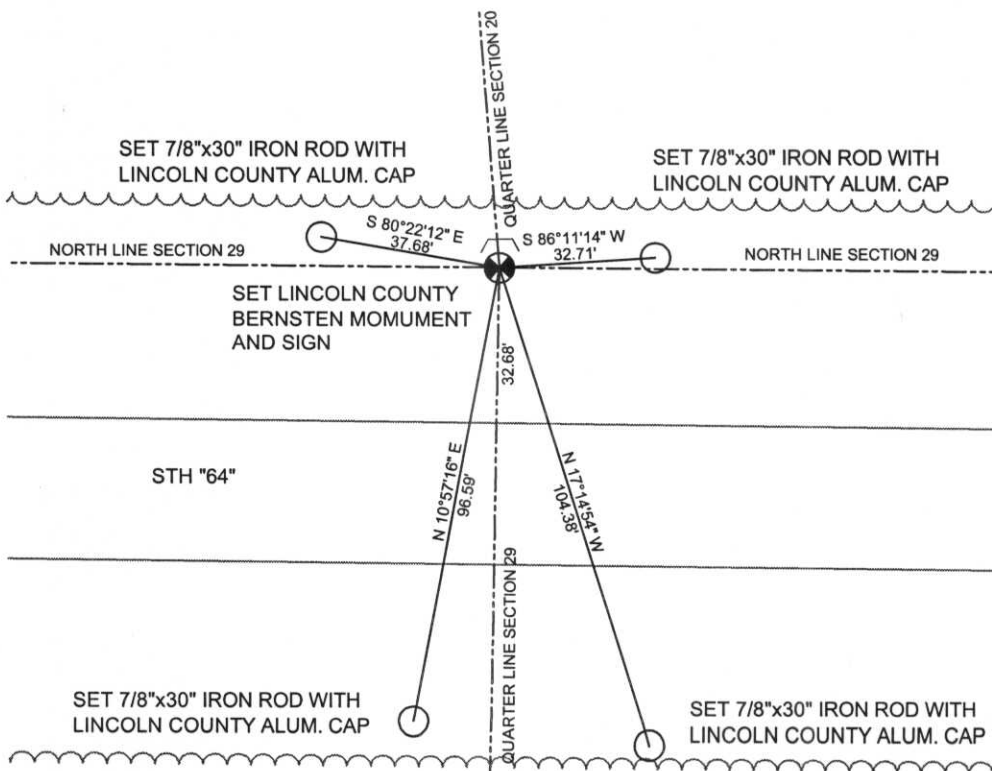
Ronald Jacobson  
Ronald Jacobson RLS 2059-008  
Registered Land Surveyor

COMPANY: Central Wisconsin Engineers & Architects  
5707 Schofield Ave.  
Weston, Wisconsin 54476  
(715) 359-3400

DATE: September 29, 2006

## TIE SKETCH:

SHOW MINIMUM OF FOUR (4) HORIZONTAL TIE DISTANCES TO FIXED WITNESS MONUMENTS.  
DESCRIBE ALL MONUMENTS FOUND OR SET. ALL DISTANCES SHOWN IN US SURVEY FEET.



COORDINATES ARE REFERENCED TO LINCOLN COUNTY COORDINATE SYSTEM AS DEVELOPED BY THE WI. DEPARTMENT OF TRANSPORTATION AND ARE BASED ON GPS OBSERVATIONS TO CONTROL POINTS AS SUPPLIED BY LINCOLN COUNTY.

NOT TO SCALE  
BEARINGS REFERENCED TO LINCOLN COUNTY COORDINATE SYSTEM









