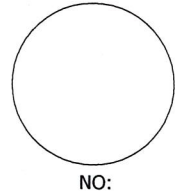


**LINCOLN COUNTY U.S. PUBLIC LAND
SURVEY MONUMENT LOCATION RECORD**

CORNER LOCATION: SOUTHEAST CORNER
 MONUMENT TYPE: BERNSTEN
 COUNTY COORDINATE: (N 117008.94) (E 311622.92)
 HORIZONTAL DATUM: WCCS LINCOLN CO. NAD83 2011
 DATE OF SURVEY: 11-15-2021
 SURVEY PARTY: JASON J. PFLIEGER

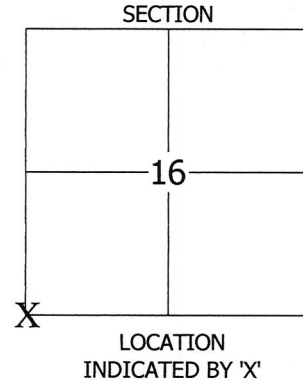
FOUND
 SET
 RE-SET
 RE-TIED
 SECTION 16
 TOWNSHIP 31 NORTH
 RANGE 4 EAST
 TOWN OF CORNING



BASIS FOR MONUMENT LOCATION:

2006: CORNER WAS PREVIOUSLY TIED OUT BY RON JACOBSON (S-2059). HE FOUND A 1" IRON PIPE AND HELD IT AS THE SECTION CORNER LOCATION.

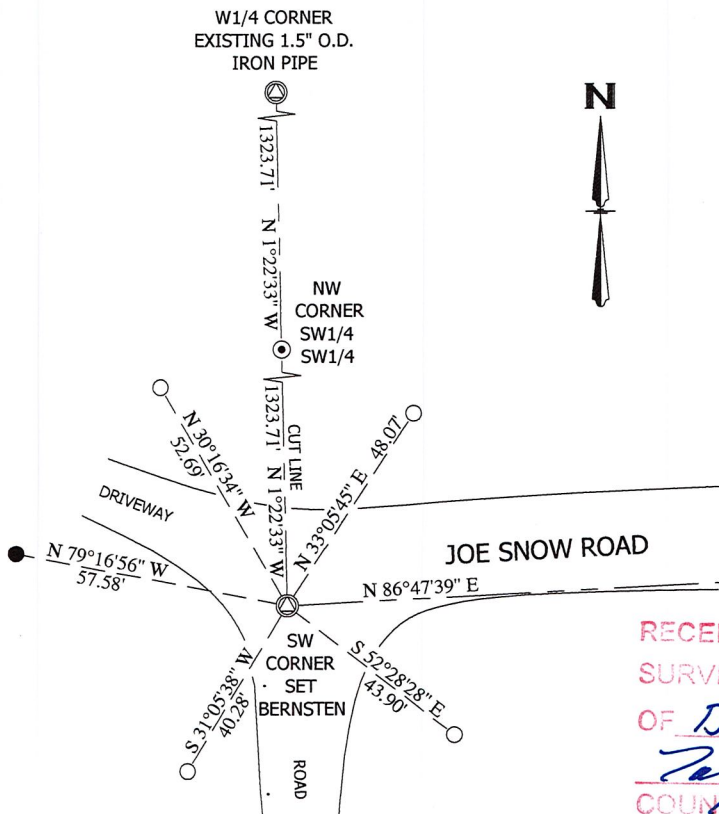
2021: I FOUND THE 1" IRON PIPE AT THE SW CORNER TIED OUT BY JACOBSON THAT DID NOT FIT CUT LINES OR EXISTING TRAILS AND ROADS. I ALSO FOUND A 1.5" IRON PIPE AT THE WEST QUARTER CORNER AND A 1.5" IRON PIPE AT THE NW CORNER OF THE SW1/4 SW1/4 THAT FIT A CUT LINE. WHEN I DOUBLED DOWN THE DISTANCE FROM THE WEST 1/4 CORNER TO THE NW CORNER OF THE SW1/4 SW1/4, THE LOCATION FIT CUT LINES AND THE ROAD CUT TO THE SOUTH. I USED THIS AS THE BEST EVIDENCE OF THE LOCATION OF THE SECTION CORNER. I SET A BERNSTEN MONUMENT AT THE CORNER LOCATION AND SET 4 NEW TIES AS SHOWN.



J. Pflieger

JASON J. PFLIEGER P.L.S. 3148-8
 DATE: 12-1-2021

TIE SKETCH:



LEGEND

| | |
|--|---------------------------|
| | = SECTION CORNER AS NOTED |
| | |

BEARING REFERENCE
 BEARINGS REFERENCED TO THE WEST LINE OF THE SW1/4 BEARING N 1°22'33" W PER WCCS (LINCOLN COUNTY) NAD83 (2011)

RECEIVED BY LINCOLN COUNTY
 SURVEYOR THIS 3RD DAY
 OF December 20 21
Zemy Dahl
 COUNTY SURVEYOR

11-9

LINCOLN COUNTY U.S. PUBLIC LAND TIE SHEET RECORD

SECTION 16
TOWNSHIP 31N
RANGE 4 E

163146
NO.

LANDMARK

CORNING
CITY, VILLAGE, TOWN

CORNER INDENTITY: BERNSTEN MONUMENT

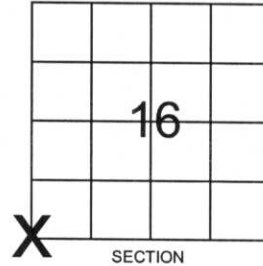
LINCOLN COUNTY COORDINATE: N: 117019.6630

E: 311566.4590

DATE OF SURVEY: October 3, 2006

SURVEY PARTY: Rutzen/Rehfeldt/Dahlvig

FOUND
SET
RE-SET
RE-TIED



Description of monument found at this corner and if was accepted, state all evidence (material, testimonial, occupational, plats, records, other monuments) used as a basis for accepting. If not accepted or if nothing was found, state evidence used as basis for establishing location. If reestablished through lost corner proportionate methods, indicate all monuments, distances and directions used to establish.

BASIS FOR MONUMENT LOCATION:

(DESCRIBE METHOD OF SURVEY AND CORNER AUTHENTICATION)

Found iron pipe was held based on parcel line evidence, and roadway evidence found in the field.



CERTIFIED CORRECT:

Ronald K. Jacobson

Ronald Jacobson RLS 2059-008

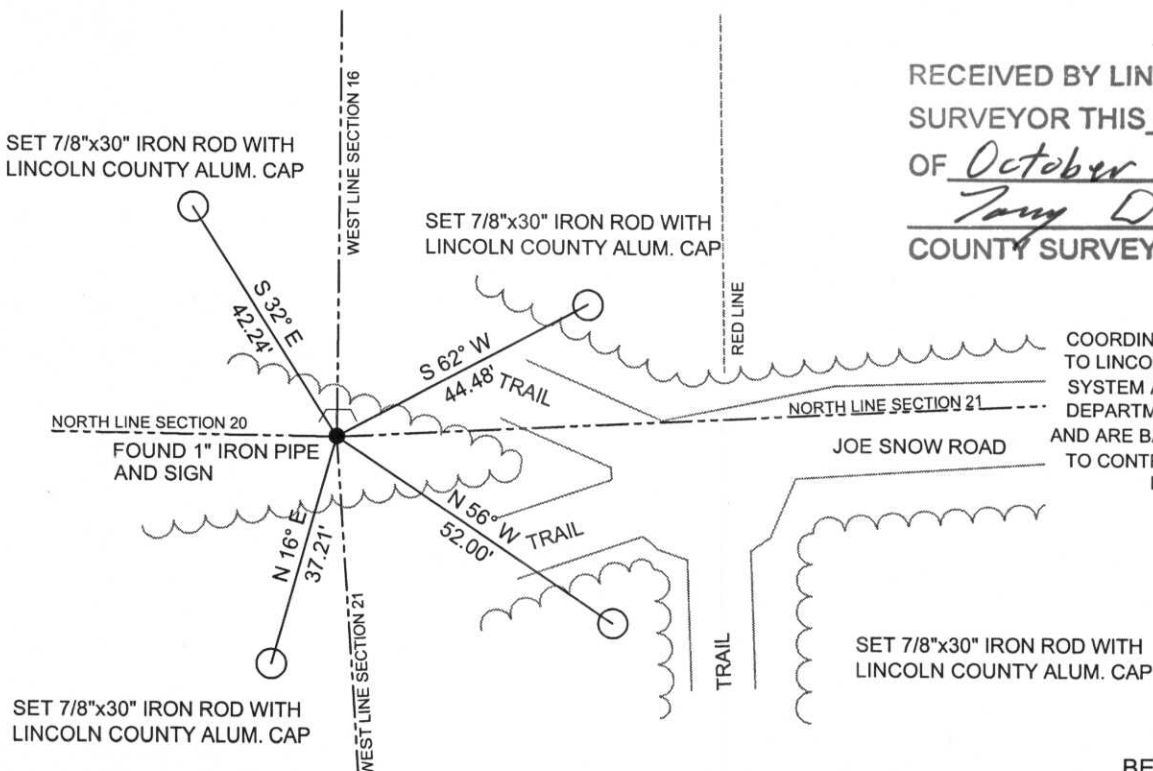
Registered Land Surveyor

DATE: October 24, 2006

COMPANY: Central Wisconsin Engineers & Architects
5707 Schofield Ave.
Weston, Wisconsin 54476
(715) 359-9400

TIE SKETCH:

SHOW MINIMUM OF FOUR (4) HORIZONTAL TIE DISTANCES TO FIXED WITNESS MONUMENTS.
DESCRIBE ALL MONUMENTS FOUND OR SET. ALL DISTANCES SHOWN IN US SURVEY FEET.



RECEIVED BY LINCOLN COUNTY
SURVEYOR THIS 31st DAY
OF October 20 06
Tony Dahl
COUNTY SURVEYOR

COORDINATES ARE REFERENCED TO LINCOLN COUNTY COORDINATE SYSTEM AS DEVELOPED BY THE WI. DEPARTMENT OF TRANSPORTATION AND ARE BASED ON GPS OBSERVATIONS TO CONTROL POINTS AS SUPPLIED BY LINCOLN COUNTY.

NOT TO SCALE
BEARINGS REFERENCED TO MAGNETIC NORTH











