

LINCOLN COUNTY U.S. PUBLIC LAND TIE SHEET RECORD

SECTION 13
TOWNSHIP 31N
RANGE 4 E

133144
NO.

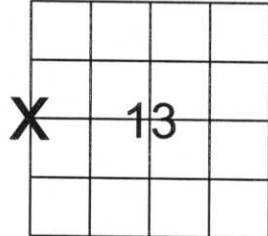
LANDMARK

CORNING
CITY, VILLAGE, TOWN

CORNER IDENTITY: 1.5" IRON PIPE

LINCOLN COUNTY COORDINATE: N: 119527.9380
E: 327400.0210

FOUND
SET
RE-SET
RE-TIED



DATE OF SURVEY: October 25, 2006
SURVEY PARTY: Rutzen/Rehfeldt

Description of monument found at this corner and if was accepted, state all evidence (material, testimonial, occupational, plats, records, other monuments) used as a basis for accepting. If not accepted or if nothing was found, state evidence used as basis for establishing location. If reestablished through lost corner proportionate methods, indicate all monuments, distances and directions used to establish.

BASIS FOR MONUMENT LOCATION:

(DESCRIBE METHOD OF SURVEY AND CORNER AUTHENTICATION)

Found 1.5" iron pipe with wood post next to it.
Held the pipe as the corner.



CERTIFIED CORRECT:

Ronald Jacobson

Ronald Jacobson RLS 2059-008

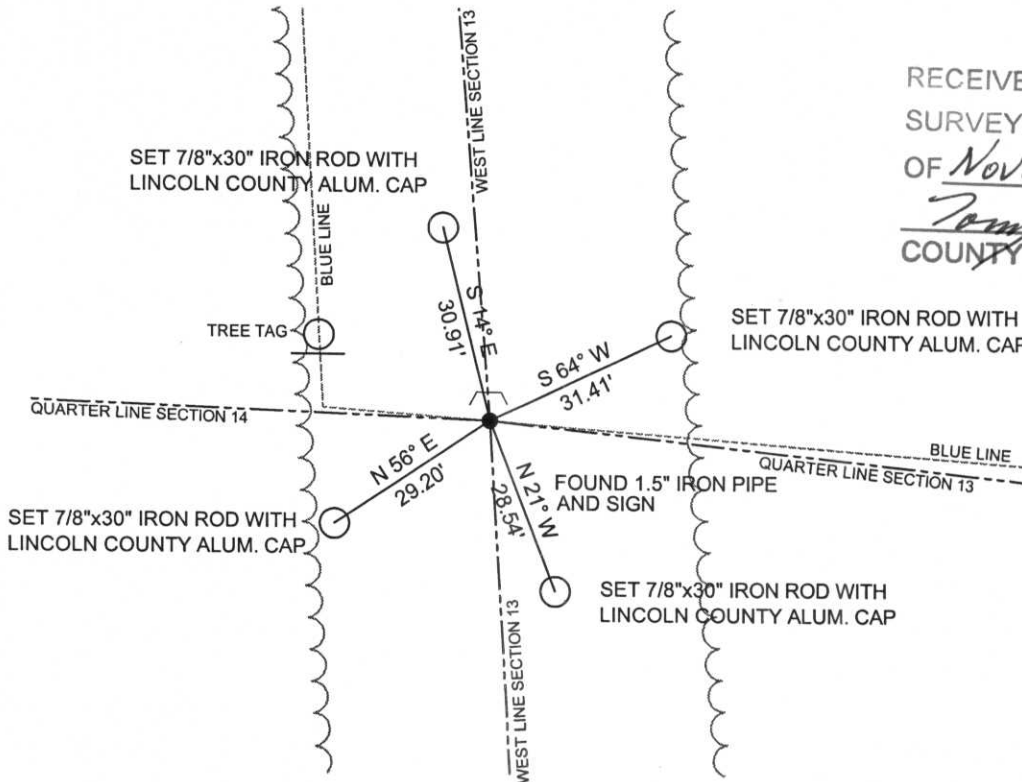
Registered Land Surveyor

DATE: November 3, 2006

COMPANY: Central Wisconsin Engineers & Architects
5707 Schofield Ave.
Weston, Wisconsin 54476
(715) 359-9400

TIE SKETCH:

SHOW MINIMUM OF FOUR (4) HORIZONTAL TIE DISTANCES TO FIXED WITNESS MONUMENTS.
DESCRIBE ALL MONUMENTS FOUND OR SET. ALL DISTANCES SHOWN IN US SURVEY FEET.



RECEIVED BY LINCOLN COUNTY
SURVEYOR THIS 07TH DAY
OF November 20 06
Tom Dahl
COUNTY SURVEYOR

COORDINATES ARE REFERENCED TO LINCOLN COUNTY COORDINATE SYSTEM AS DEVELOPED BY THE WI. DEPARTMENT OF TRANSPORTATION AND ARE BASED ON GPS OBSERVATIONS TO CONTROL POINTS AS SUPPLIED BY LINCOLN COUNTY.



NOT TO SCALE
BEARINGS REFERENCED TO MAGNETIC NORTH











PLEASE
DO NOT
DISTURB
NEARBY

SM









proper eye
my object



