

U.S. PUBLIC LAND SURVEY MONUMENT RECORD

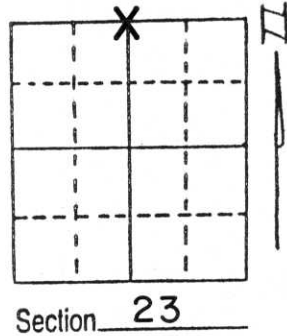
Note: This form is intended and designed to fulfill all requirements of Wisconsin Administrative Code, Chapter A-E 5.02, U.S. Public Land Survey Monument Record (3) (a) (b) (c) (d) (e) (f) (g) (h) (i). An additional sheet may be added if necessary to conform with said requirements.

(a) Corner location: Township 31 North

Range 4 East

Town/City/Village CORNING

County LINCOLN

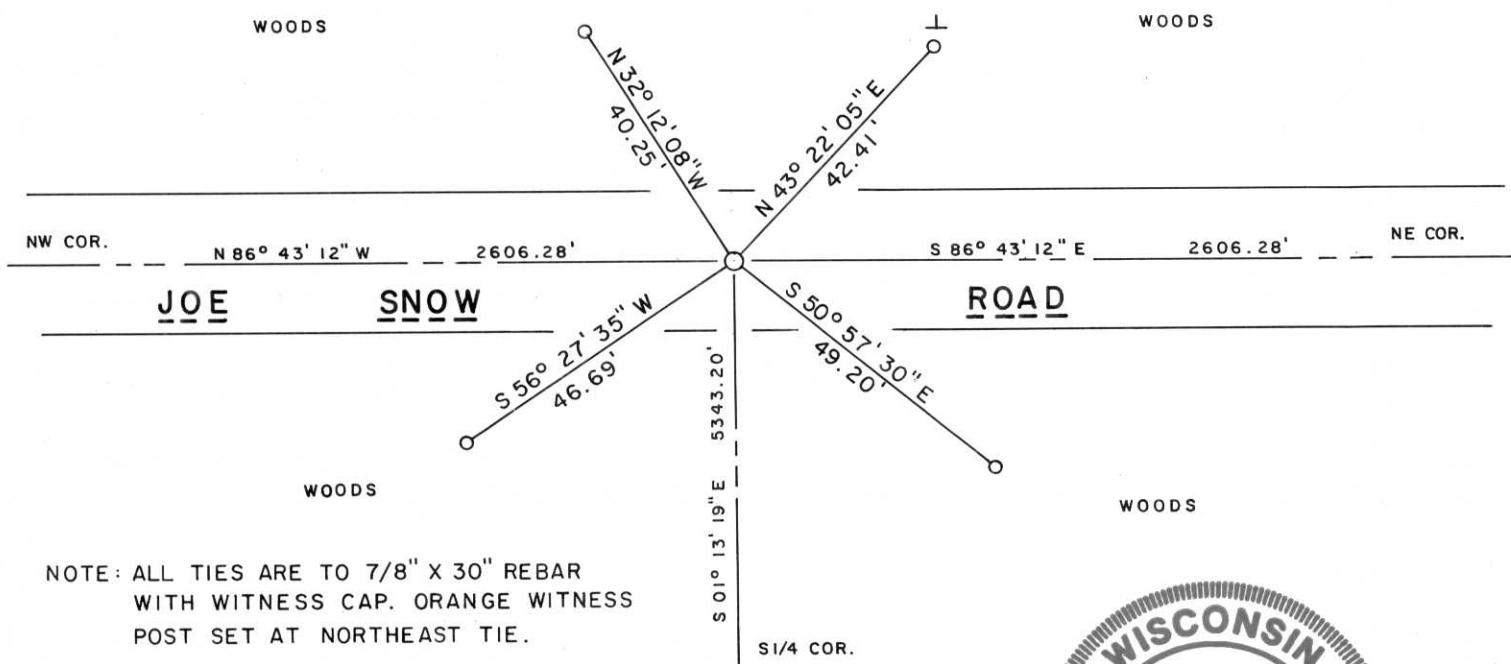


(b) (f) (g) (h) Description of monument found at this corner and if it was accepted, state all evidence (material, testimonial, occupational, plats, records, other monuments) used as a basis for accepting. If not accepted or if nothing was found, state evidence used as basis for establishing location. If reestablished through lost corner proportionate methods, indicate all monuments, distances and directions used to establish.

Original corner - Wood Post set by W.E. Daugherty, 1851?. No remonumentation notes available.
 Excavated for corner in April, 1994 and found no evidence of corner. Traversed all of Section 23, 25 and 26 and all of Section 24 save for East 1/4 corner. Corner point established by single proportionate measurement between Northeast and Northwest corners as no fence or discernible occupation lines were in evidence. Set a Standard Lincoln County Berntsen Monument at corner and filed complete section summary of Section 23 with County Surveyor's Office.

RECEIVED AT LINCOLN COUNTY
 COURTHOUSE THIS 25 DAY
 OF May 1995.
Pat Riche
 TAX DESCRIPTION OFFICE

(c) (d) (e) Plan view of corner with ties to at least 4 witness monuments. If in disagreement with previously established corner, show the distances between the two corners and also indicate the ties to the disputed corner.



(i) I, LAVERNE H. MOSHER
 (type or print name) certify that the corner location on this record was determined by me or under my direction and control and that this U.S. Public Land Survey Monument Record is correct and complete to the best of my knowledge and belief.



LaVerne H. Mosher MAY 24, 1995
 Signature Date

Index No. M-19