

U.S. PUBLIC LAND SURVEY MONUMENT RECORD

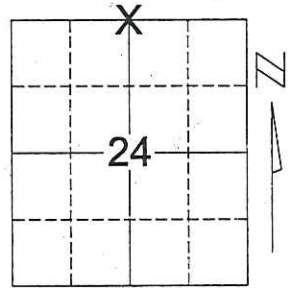
Note: This form is intended and designed to fulfill all requirements of Wisconsin Administrative Code, Chapter A-E 7.08, U.S. Public Land Survey Monument Record (3)(a)(b)(c)(d)(e)(f)(g)(h)(i). An additional sheet may be added if necessary to conform with said requirements.

(a) Corner location: Township 31 North

Range 4 East

Town/City/Village CORNING

County LINCOLN

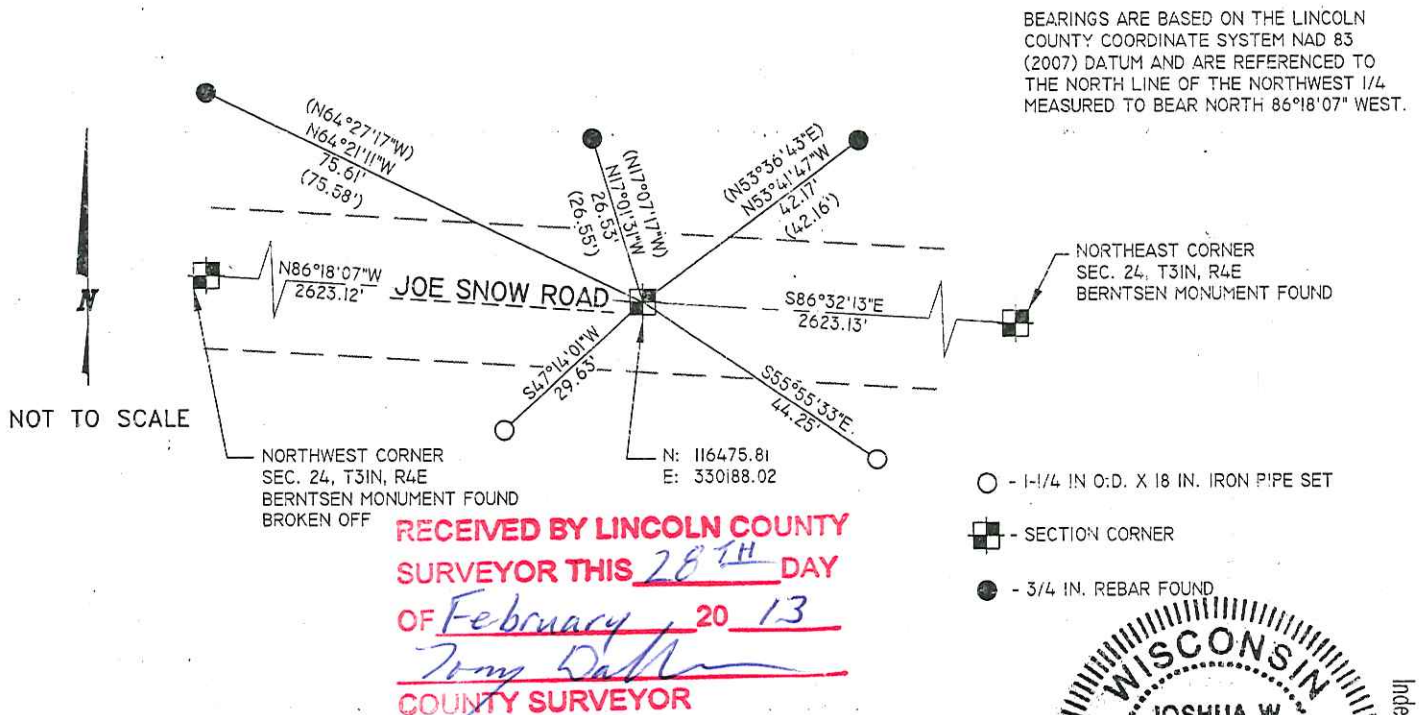


Section 24

(b)(f)(g)(h) Description of monument found at this corner and if it was accepted, state all evidence (material, testimonial, occupational, plats, records, other monuments) used as a basis for accepting. If not accepted or if nothing was found, state evidence used as basis for establishing location. If reestablished through lost corner proportionate methods, indicate all monuments, distances and directions used to establish.

WE MADE A THOROUGH SEARCH FOR EVIDENCE OF THE MONUMENT. THE GRAVEL ROAD APPEARED TO BE RE-GRADED AND THE MONUMENT WAS MISSING. WE FOUND 3 EXISTING TIES LOCATED ON THE NORTH SIDE OF JOE SNOW ROAD FROM THE FERGOT TIE SHEET DATED APRIL 28, 1998. USING THE EXISTING TIES WE SET A 1.25 INCH BY 18 INCH IRON BAR FOR THE SECTION CORNER AND TWO 1.25 INCH O.D. BY 18 INCH IRON PIPES FOR TIES ON THE SOUTH SIDE OF JOE SNOW ROAD.

(c)(d)(e) Plan view of corner with ties to at least 4 witness monuments. If in disagreement with previously established corner, show the distances between the two corners and also indicate the ties to the disputed corner.



(i) I, Joshua W. Prentice, RLS S-2852, certify that the corner location on this record was determined by me or under my direction and control and that this U.S. Public Land Survey Monument Record is correct and complete to the best of my knowledge and belief.

Signature

2-27-2013

Date



Index No. M-23

U.S. PUBLIC LAND SURVEY MONUMENT RECORD

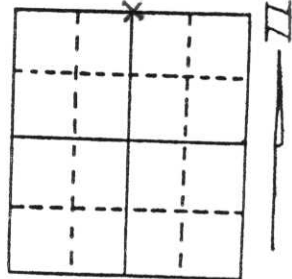
Note: This form is intended and designed to fulfill all requirements of Wisconsin Administrative Code, Chapter A-E 5.02, U.S. Public Land Survey Monument Record (3) (a) (b) (c) (d) (e) (f) (g) (h) (i). An additional sheet may be added if necessary to conform with said requirements.

(a) Corner location: Township 31 North

Range 4 East

Town/City/Village CORNING

County LINCOLN

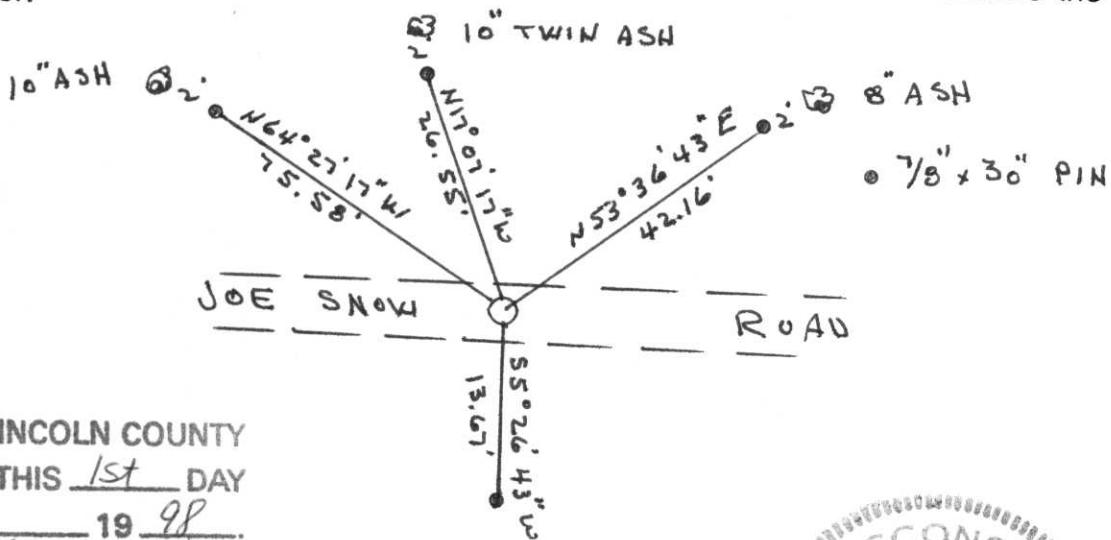


Section 24

(b) (f) (g) (h) Description of monument found at this corner and if it was accepted, state all evidence (material, testimonial, occupational, plats, records, other monuments) used as a basis for accepting. If not accepted or if nothing was found, state evidence used as basis for establishing location. If reestablished through lost corner proportionate methods, indicate all monuments, distances and directions used to establish.

Made thorough search for evidence of corner. Location is in alder swamp, no fences or lines of occupation.
Set Berntsen Monument in center of road midway between NW Corner and NE Corner.

(c) (d) (e) Plan view of corner with ties to at least 4 witness monuments. If in disagreement with previously established corner, show the distances between the two corners and also indicate the ties to the disputed corner.



RECEIVED AT LINCOLN COUNTY
COURTHOUSE THIS 1st DAY
OF May 19 98
Pat Priske
TAX DESCRIPTION OFFICE



(i) I, Robert K. Fergot
(type or print name) certify that the corner location on this record was determined by me or under my direction and control and that this U.S. Public Land Survey Monument Record is correct and complete to the best of my knowledge and belief.

Robert K. Fergot Signature April 20, 1998 Date