

# U.S. PUBLIC LAND SURVEY MONUMENT RECORD

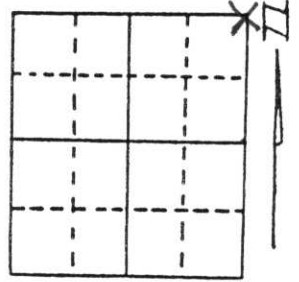
Note: This form is intended and designed to fulfill all requirements of Wisconsin Administrative Code, Chapter A-E 5.02, U.S. Public Land Survey Monument Record (3) (a) (b) (c) (d) (e) (f) (g) (h) (i). An additional sheet may be added if necessary to conform with said requirements.

(a) Corner location: Township 31 North

Range 4 East

Town/City/Village CORNING

County LINCOLN

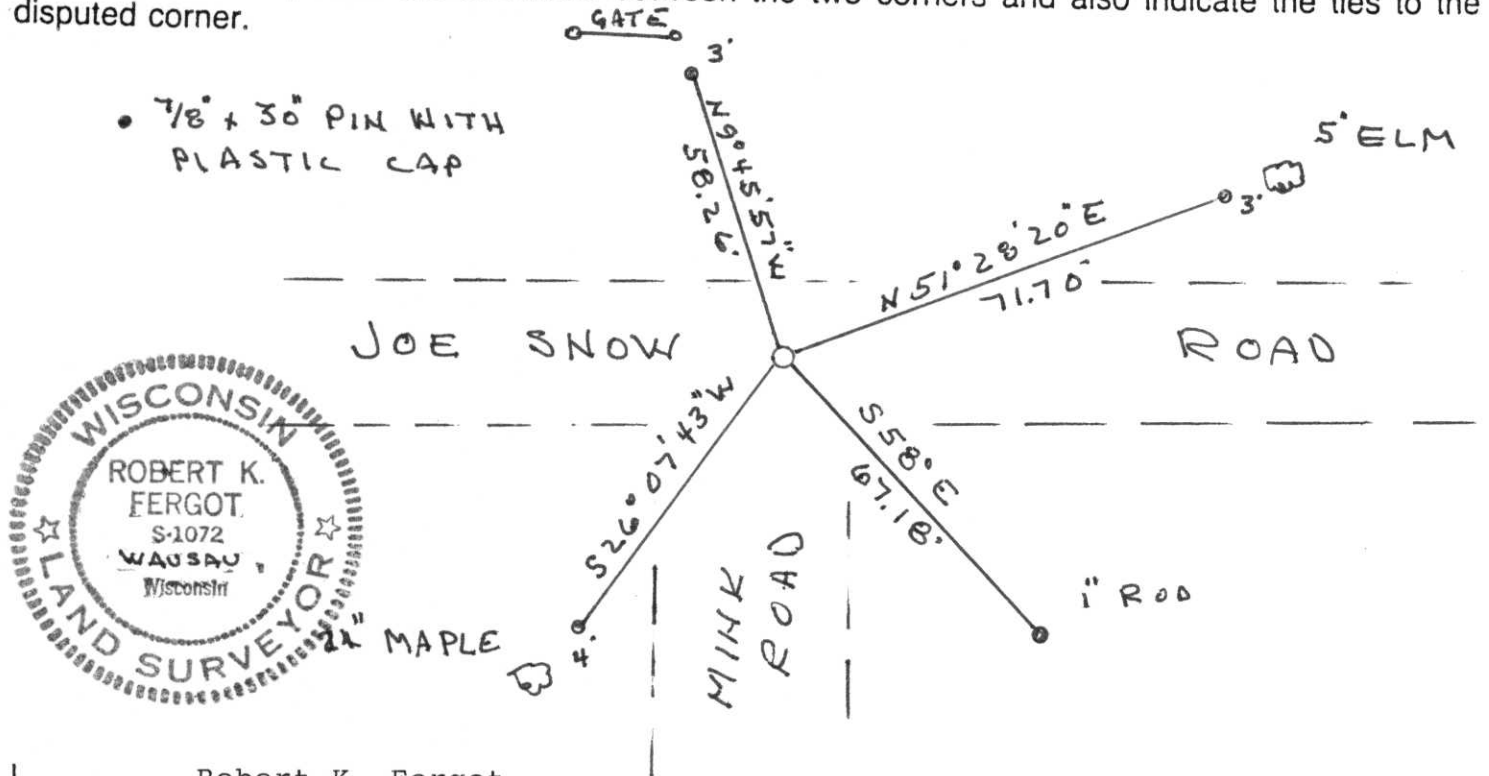


Section 24

(b) (f) (g) (h) Description of monument found at this corner and if it was accepted, state all evidence (material, testimonial, occupational, plats, records, other monuments) used as a basis for accepting. If not accepted or if nothing was found, state evidence used as basis for establishing location. If reestablished through lost corner proportionate methods, indicate all monuments, distances and directions used to establish.

Only 2 ties remaining from Sheridan <sup>Schwark</sup> Swartz tie sheet of July, 1982. Recovered Berntsen monument in 3 pieces.  
Set new Berntsen Monument using existing ties.  
Set new witness monuments.

(c) (d) (e) Plan view of corner with ties to at least 4 witness monuments. If in disagreement with previously established corner, show the distances between the two corners and also indicate the ties to the disputed corner.



(i) I, Robert K. Fergot  
(type or print name) certify that the corner location on this record was determined by me or under my direction and control and that this U.S. Public Land Survey Monument Record is correct and complete to the best of my knowledge and belief.

Robert K. Fergot Signature      June 17, 1998 Date

RECEIVED AT LINCOLN COUNTY COURTHOUSE THIS 22nd DAY OF June 19 98  
TAX DESCRIPTION OFFICE  
*Ant. Orsini*

Index No. M-25

CERTIFIED LAND CORNER RESTORATION

Index No. M-1

State of Wisconsin }  
County of Lincoln } ss.

History of original corner establishment:  
Wood post set by original government surveyor

I Sheridan D. Schwark, do hereby certify that on the 12th day of July, 1982, I found evidence of the Southwest corner of Section 18 Township 31, North, Range 5 East, Fourth, Principal Meridian, as described hereon; and that from this evidence I established a new monument and accessories as described hereon to perpetuate the original location of this corner.

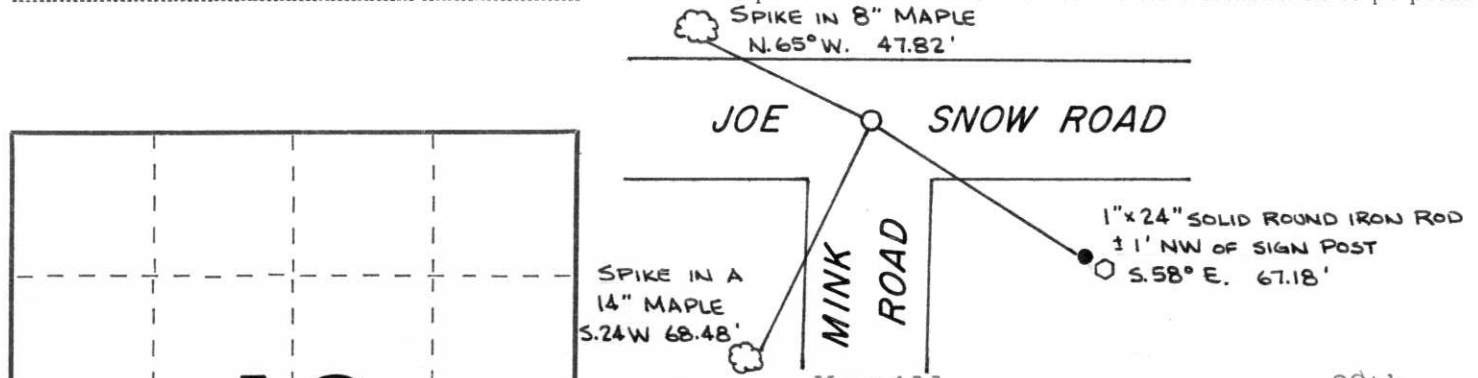
Description of corner evidence found:

We were contacted by the Town of Corning chairman (William Behrens) and told that they broke the top off the S.W. Section corner. We recovered both the broken top and a portion which was still upright and undisturbed. We replaced the broken monument with a Lincoln County Berntsen Monument and established the references as shown below.

Resident witnesses:

William Behrens

Description of monument and accessories I established to perpetuate the original location of this corner.



Dated at Merrill, Wis., this 28th day of July, 1982

Signature Sheridan D. Schwark Title Registered Land Surveyor Registration No. S-1205  
(County Surveyor, Registered Land Surveyor, or other duly authorized official)

Office of Register of Deeds, County of \_\_\_\_\_, I hereby certify that the within instrument was filed in this office for record on the \_\_\_\_\_ day of \_\_\_\_\_, 19\_\_\_\_ at \_\_\_\_\_ o'clock \_\_\_\_\_ M.

\_\_\_\_\_  
(Register of Deeds)

By \_\_\_\_\_ Deputy

○ = Corner monument restored.