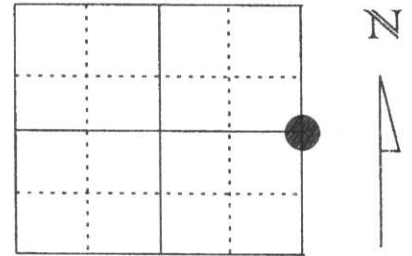


# U.S. PUBLIC LAND SURVEY MONUMENT RECORD

Note: This form is intended and designed to fulfill all requirements of Wisconsin Administrative Code, Chapter A-E 5.02, U.S. Public Land Survey Monument Record (3) (a) (b) (c) (d) (e) (f) (g) (h) (i). An additional sheet may be added if necessary to conform with said requirements.

(a) Corner location: Township 31 North  
 Range 4 East  
 Town/City/Village TN. OF CORNING  
 County Lincoln



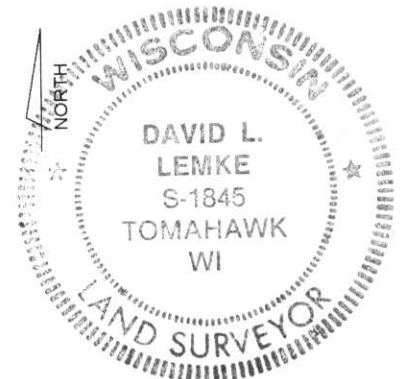
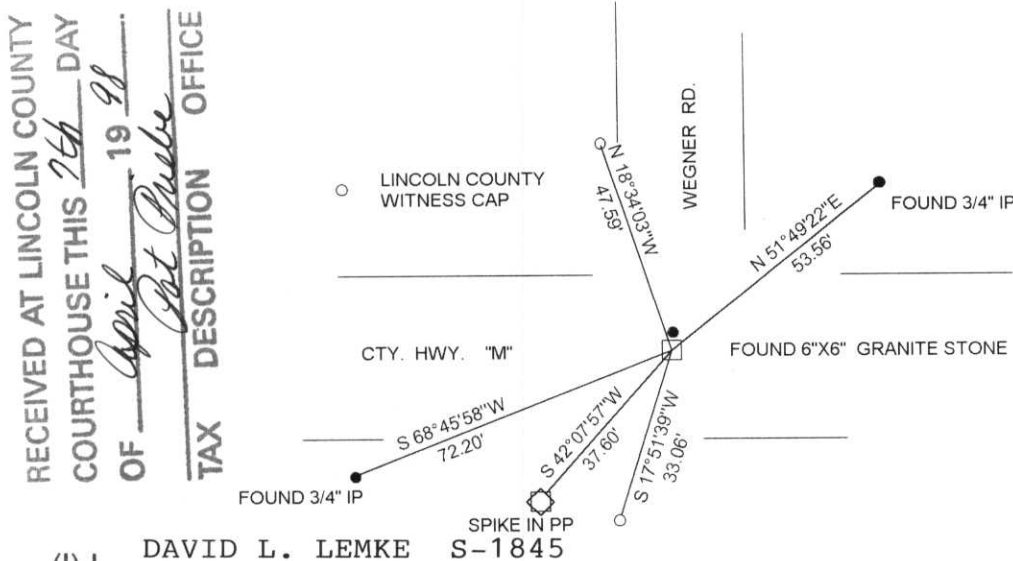
Section 12

(b) (f) (g) (h) Description of monument found at this corner and if it was accepted, state all evidence (material, testimonial, occupational, plats, records, other monuments) used as a basis for accepting. If not accepted or if nothing was found, state evidence used as basis for establishing location. If reestablished through lost corner proportionate methods, indicate all monuments, distances and directions used to establish.

JUNE OF 1994 ED ABENDROTH SET A PK NAIL FOR THE CORNER POSITION WHEN DENIED BY THE COUNTY HIGHWAY DEPT. TO DIG FOR THE CORNER. HE ESTABLISHED 4 TIES TO THE PK NAIL

MARCH 1998 I EXCAVATED THE INTERSECT OF HWY. "M" & WEGNER RD. AND FOUND A 6"X6" GRANITE STONE 1.5' BELOW THE PAVEMENT AND 1.5' NORTH OF THE C/L ON HWY. "M". A 1" IRON BAR WAS SET ON THE NORTH SIDE OF THE STONE AND RETIED TO ED'S NELY AND SWLY 3/4" IRON PIPES AND TO WITNESS CAPS AS SHOWN.

(c) (d) (e) Plan view of corner with ties to at least 4 witness monuments. If in disagreement with previously established corner, show the distances between the two corners and also indicate the ties to the disputed corner.



(i) I, DAVID L. LEMKE S-1845  
 (type or print name) certify that the corner location on this record was determined by me or under my direction and control and that this U.S. Public Land Survey Monument Record is correct and complete to the best of my knowledge and belief.

*David L. Lemke*

MAR. 30 1998

Signature

Date

# U.S. PUBLIC LAND SURVEY MONUMENT RECORD

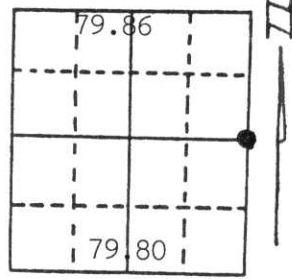
Note: This form is intended and designed to fulfill all requirements of Wisconsin Administrative Code, Chapter A-E 5.02, U.S. Public Land Survey Monument Record (3) (a) (b) (c) (d) (e) (f) (g) (h) (i). An additional sheet may be added if necessary to conform with said requirements.

(a) Corner location: Township 31 North

Range 4 East

Town/City/Village CORNING

County LINCOLN



Section 12

(b) (f) (g) (h) Description of monument found at this corner and if it was accepted, state all evidence (material, testimonial, occupational, plats, records, other monuments) used as a basis for accepting. If not accepted or if nothing was found, state evidence used as basis for establishing location. If reestablished through lost corner proportionate methods, indicate all monuments, distances and directions used to establish.

Did not find any monument at this location; did not dig up county highway. We asked permission to dig up C.T.H. "M" at this location to search for corner permission denied by highway commissioner.

Corner location is centerline intersection used by other surveyors. Accepted this as best available evidence. We believe this location was erroneously established by not allowing the Section to east (a closing section 7) which according to Gov't. notes should be a longer than normal closing section. Section 7 appears to have been established at normal distances while overage was carried into Section 12.

RECEIVED AT LINCOLN COUNTY

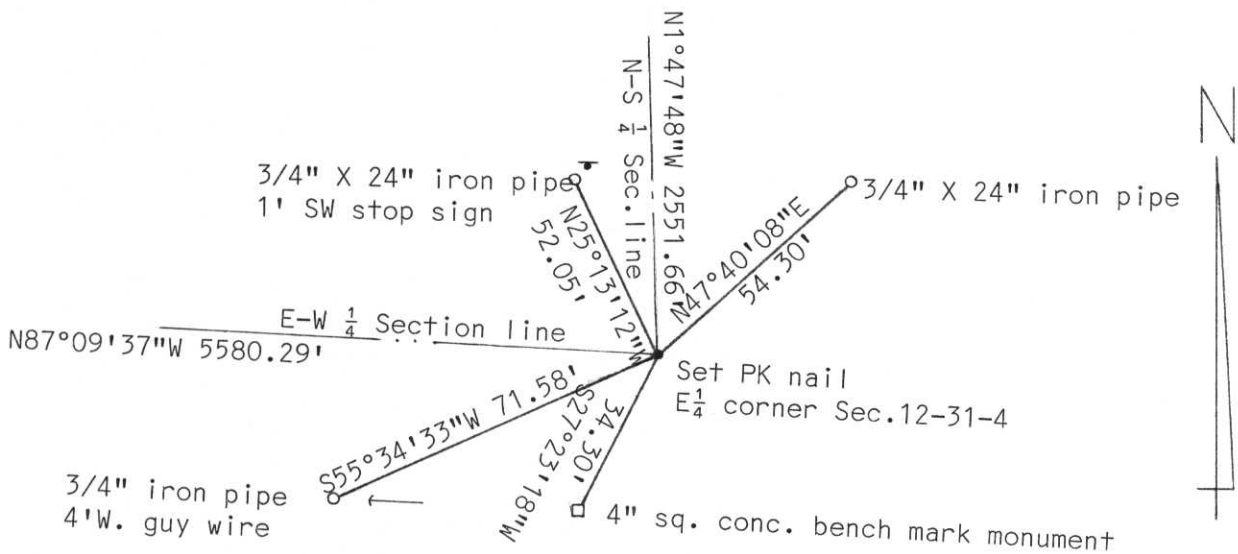
COURTHOUSE THIS 3rd DAY

OF June 19 94

Pat Niebe

TAX DESCRIPTION OFFICE

(c) (d) (e) Plan view of corner with ties to at least 4 witness monuments. If in disagreement with previously established corner, show the distances between the two corners and also indicate the ties to the disputed corner.



(i) I, Edwin R. Abendroth RLS No. S-798  
 (type or print name) certify that the corner location on this record was determined by me or under my direction and control and that this U.S. Public Land Survey Monument Record is correct and complete to the best of my knowledge and belief.

Edwin R. Abendroth 6-3-94  
 Signature Date



Index No. G-25





