

# LINCOLN COUNTY U.S. PUBLIC LAND TIE SHEET RECORD

SECTION 13  
TOWNSHIP 31N  
RANGE 4 E

133142  
NO.

LANDMARK

CORNER INDENTITY: BERNSTEN MONUMENT

LINCOLN COUNTY COORDINATE: N: 122032.5952

E: 330041.7807

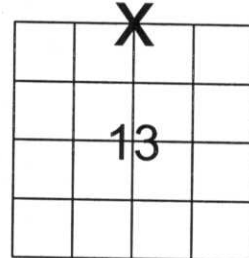
DATE OF SURVEY: October 26, 2006

SURVEY PARTY: Rutzen/Rehfeldt

CORNING

CITY, VILLAGE, TOWN

FOUND   
SET   
RE-SET   
RE-TIED



SECTION

Description of monument found at this corner and if was accepted, state all evidence (material, testimonial, occupational, plats, records, other monuments) used as a basis for accepting. If not accepted or if nothing was found, state evidence used as basis for establishing location. If reestablished through lost corner proportionate methods, indicate all monuments, distances and directions used to establish.

## BASIS FOR MONUMENT LOCATION:

(DESCRIBE METHOD OF SURVEY AND CORNER AUTHENTICATION)

Monument was set at equal distance from the Northeast corner and the Northwest corner and along an old fence line. This appeared to be the best evidence of the corners location.



CERTIFIED CORRECT:

*Ronald Jacobson*

Ronald Jacobson RLS 2059-008

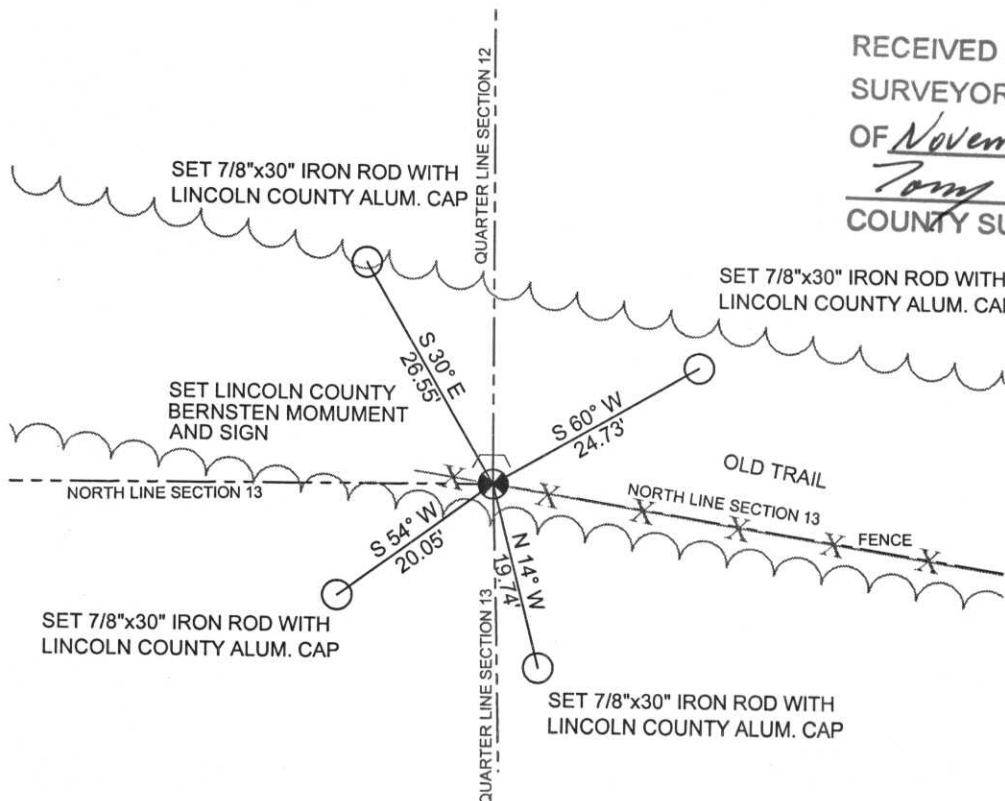
Registered Land Surveyor

DATE: November 3, 2006

COMPANY: Central Wisconsin Engineers & Architects  
5707 Schofield Ave.  
Weston, Wisconsin 54476  
(715) 359-9400

## TIE SKETCH:

SHOW MINIMUM OF FOUR (4) HORIZONTAL TIE DISTANCES TO FIXED WITNESS MONUMENTS. DESCRIBE ALL MONUMENTS FOUND OR SET. ALL DISTANCES SHOWN IN US SURVEY FEET.



RECEIVED BY LINCOLN COUNTY  
SURVEYOR THIS 8TH DAY  
OF November 20 06  
*Tom Dahl*  
COUNTY SURVEYOR

COORDINATES ARE REFERENCED TO LINCOLN COUNTY COORDINATE SYSTEM AS DEVELOPED BY THE WI. DEPARTMENT OF TRANSPORTATION AND ARE BASED ON GPS OBSERVATIONS TO CONTROL POINTS AS SUPPLIED BY LINCOLN COUNTY.

NOT TO SCALE  
BEARINGS REFERENCED TO MAGNETIC NORTH





1987  
1000















