

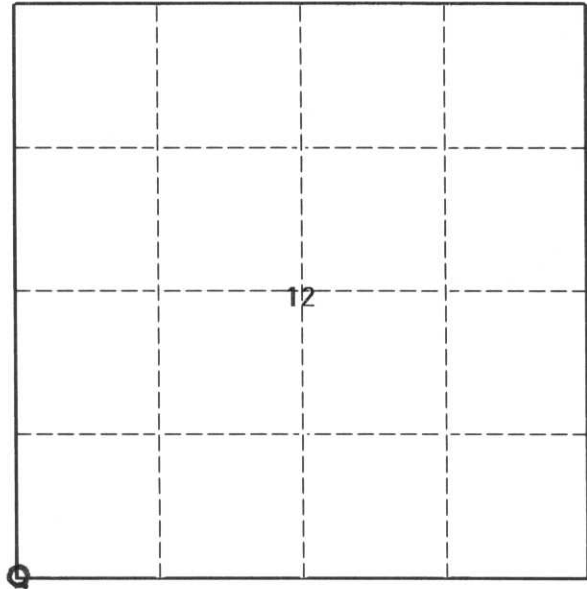
U. S. PUBLIC LAND SURVEY MONUMENT RECORD

INSTRUCTIONS:

This record shall show the location of the corner and shall include all of the following nine elements (a through i).

- (a) Identify the corner by reference to the U.S. public land survey system.
O = Corner monument restored.

SW CORNER SECTION 12, T31N, R4E
TOWN OF CORNING

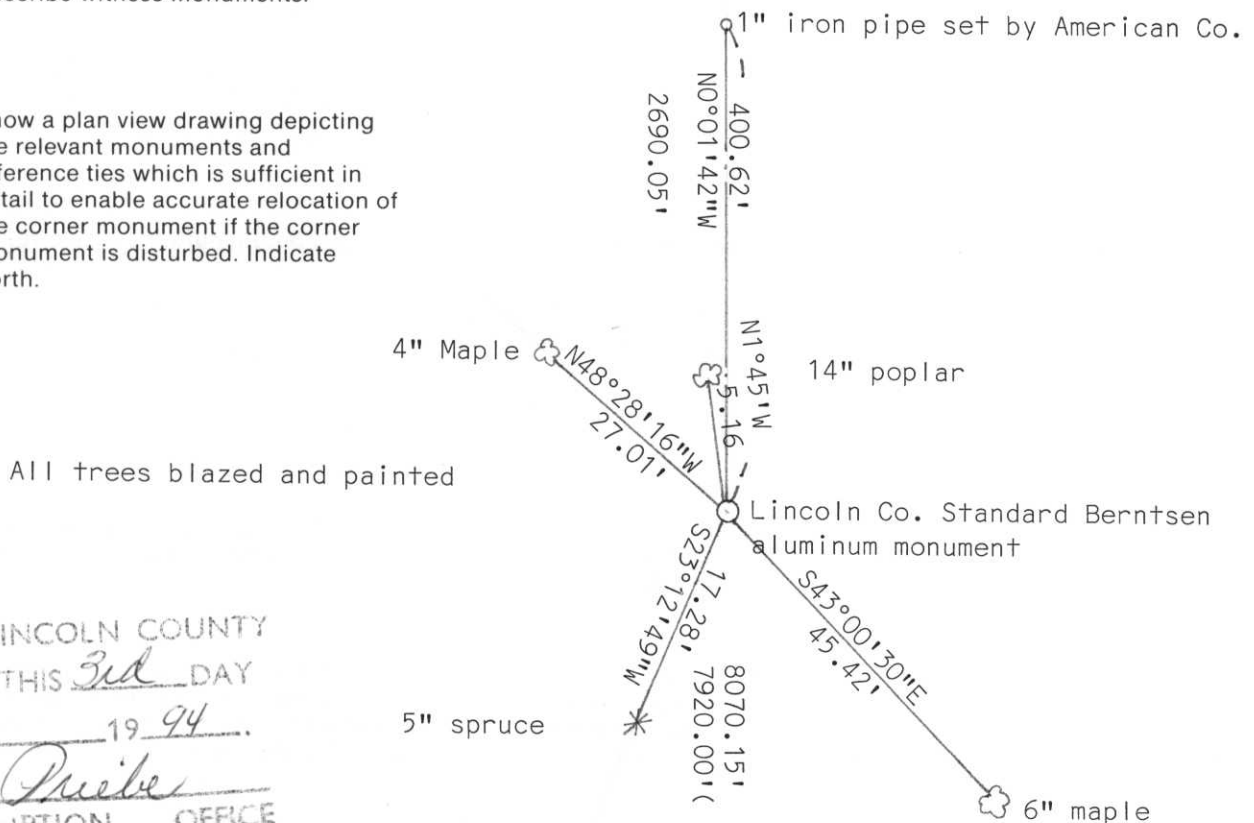


- (b) Describe any record evidence, monument evidence, occupational evidence, testimonial evidence or any other material evidence you considered, and whether the monument was found or placed.

FOUND 1" IRON PIPE SET BY AMERICAN COMPANY AND ONE BEARING TREE.. THE DISTANCE TO THE EAST $\frac{1}{4}$ corner was 400'± TOO SHORT. DID NOT ACCEPT THIS CORNER AS FOUND. MEASURED $1\frac{1}{2}$ MILES TO THE SOUTH TO VERIFY THE DISTANCES NORTH AND SOUTH. USED THE CORNER AS ESTABLISHED BY AMERICAN CO. FOR LINE EAST AND WEST.

- (c) In the plan view drawing below, provide reference ties to at least 4 witness monuments, or, if the location is within a municipality, to at least 2 witness monuments. (Witness monuments shall be made of concrete, natural stone, iron or other equally durable material.)
Describe witness monuments.

- (d) Show a plan view drawing depicting the relevant monuments and reference ties which is sufficient in detail to enable accurate relocation of the corner monument if the corner monument is disturbed. Indicate north.



I-21

RECEIVED AT LINCOLN COUNTY
COURTHOUSE THIS 3rd DAY
OF June 19 94
Pat Pfeifer
TAX DESCRIPTION OFFICE

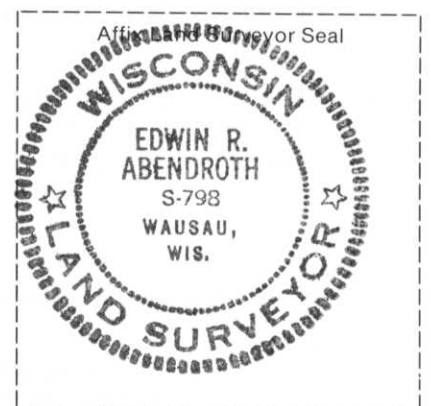
Describe any material discrepancy between the location of the corner as restored or reestablished and the location of that corner as previously restored or reestablished by distance and direction. Show the discrepancy on the plan view drawing under (d), above. Show the distances between the corner as previously restored or reestablished and (1) the corner as restored or reestablished, and (2) to at least 2 of the witness monuments shown on the drawing in (d), above.

Corner originally set at 40 chains from $\frac{1}{4}$ corner. Measured distance is 2289.43'.
to corner as established by American Co.

- (f) Was the corner restored through acceptance of (1) an obliterated evidence location, or, (2) a found perpetuated location?
(1)

- (g & h) Was the corner reestablished through lost corner proportionate methods? If so, show the method, including the directions and distances to other public land survey corners used as evidence or used for proportioning in determining the corner location.

Yes evidence givin on sketch and in text.



(i) I, Edwin R. Abendroth
(type or print name)

certify that the corner location shown on this record was determined by me or under my direction and control and that this U.S. Public Land Survey Monument Record is correct and complete to the best of my knowledge and belief.

Edwin R. Abendroth May 5, 1994
Signature Date



6 3:08 PM

Yellow identification tag on a tree trunk.

3-08 PM