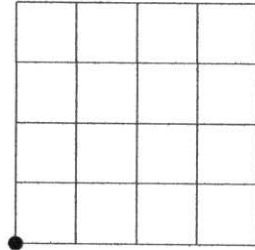


U.S. PUBLIC LAND SURVEY MONUMENT RECORD

Note: This form is intended and designed to fulfill all requirements of the Wisconsin Administrative Code, Chapter A-E 7.08 U.S. Public Land Monument Record (3)(a)(b)(c)(d)(e)(f)(g)(h)(i). An additional sheet may be added if necessary to conform with said requirements.

<p>(a) CORNER LOCATION:</p> <p>south west corner of Section 9 Township 31 North Range 4 East Town of Corning County of Lincoln</p>	<p>COORDINATES</p> <p>North: East: Control Station: Latitude: Longitude: Datum Method</p>
--	---



SECTION 9

(b) HISTORY OF ORIGINAL CORNER ESTABLISHMENT

Original Surveyor: W.E. Daugherty	Original B.T.'S
Date of Survey: Commenced December 1861	Tamarack 9" dia., N24°W 22 links
Completed January 1862	Tamarack 8" dia., S67°E 16 links

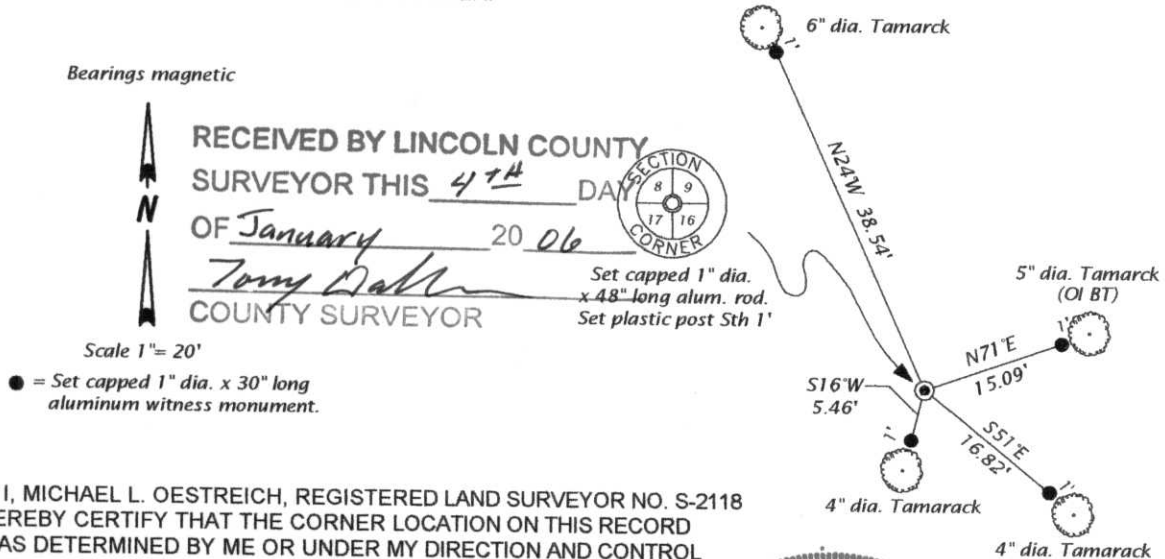
(f)(g)(h) DESCRIPTION OF MONUMENT FOUND AT THIS CORNER AND IF IT WAS ACCEPTED, STATE ALL EVIDENCE (MATERIAL, TESTIMONIAL, OCCUPATIONS, PLATS, RECORDS, OTHER MONUMENTS) USED AS A BASIS FOR ESTABLISHING LOCATION. IF NOT ACCEPTED OF IF NOTHING WAS FOUND, STATE EVIDENCE USED AS BASIS FOR ESTABLISHING LOCATION. IF REESTABLISHED THROUGH LOST CORNER PROPORTIONATE METHODS, INDICATE ALL MONUMENTS, DISTANCES AND DIRECTIONS USED TO ESTABLISH. INDICATE TYPE OF MONUMENT AND SIGN POST FOUND OR SET.

Original Surveyor: W.E. Daugherty, at 80 chains set quarter post for corner to Sections 8, 9, 16 & 17.

W. H. Stuth: 3/6/87, set an iron pipe and notes the following bearing trees: 6" Tamarack S25W 16.0' and a 4" Spruce N61E 16.0'

Michael L. Oestreich: 12/8/05, replaced a recovered 1.6" dia. iron pipe with a capped aluminum monument for the corner. The northeast bearing tree by Stuth is now dead, and still standing with blazes visible, bearing N71E at a distance of 16.00'. The southwest bearing tree by Stuth is now dead, and still standing with blazes visible, bearing S15W 17.05'. I set witness monuments and made ties as shown in plan below. See map of Survey by Oestreich Surveying & Mapping, LLC dated 11/30/05 for more survey data relating to the subdivision of Section 9.

(c)(d)(e) PLAN VIEW OF CORNER WITH TIES TO AT LEAST 4 WITNESS MONUMENTS. IF IN DISAGREEMENT WITH PREVIOUSLY ESTABLISHED CORNER, SHOW THE DISTANCE BETWEEN THE TWO CORNERS AND ALSO INDICATE THE TIES TO THE DISPUTED CORNER.



(i) I, MICHAEL L. OESTREICH, REGISTERED LAND SURVEYOR NO. S-2118 HEREBY CERTIFY THAT THE CORNER LOCATION ON THIS RECORD WAS DETERMINED BY ME OR UNDER MY DIRECTION AND CONTROL AND THAT THIS U.S. PUBLIC LAND SURVEY MONUMENT RECORD IS CORRECT AND COMPLETE TO THE BEST OF MY KNOWLEDGE AND BELIEF.

Michael L. Oestreich SIGNATURE 12/30/05 DATE



INDEX NO. I-9