

# LINCOLN COUNTY U.S. PUBLIC LAND TIE SHEET RECORD

SECTION 18  
TOWNSHIP 31N  
RANGE 4 E

183142  
NO.

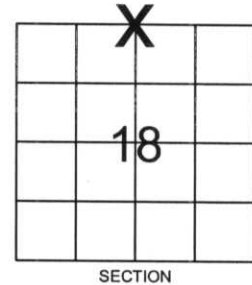
LANDMARK

CORNING  
CITY, VILLAGE, TOWN

CORNER INDENTITY: 6' ALUM. SWAMP MONUMENT

LINCOLN COUNTY COORDINATE: N: 122109.8214  
E: 303406.1185

FOUND   
SET   
RE-SET   
RE-TIED



DATE OF SURVEY: November 14, 2006  
SURVEY PARTY: Rutzen/Dahlvig

Description of monument found at this corner and if was accepted, state all evidence (material, testimonial, occupational, plats, records, other monuments) used as a basis for accepting. If not accepted or if nothing was found, state evidence used as basis for establishing location. If reestablished through lost corner proportionate methods, indicate all monuments, distances and directions used to establish.

## BASIS FOR MONUMENT LOCATION:

(DESCRIBE METHOD OF SURVEY AND CORNER AUTHENTICATION)

No evidence remained of the corner.  
Corner was set by single proportionate measurement.



CERTIFIED CORRECT:

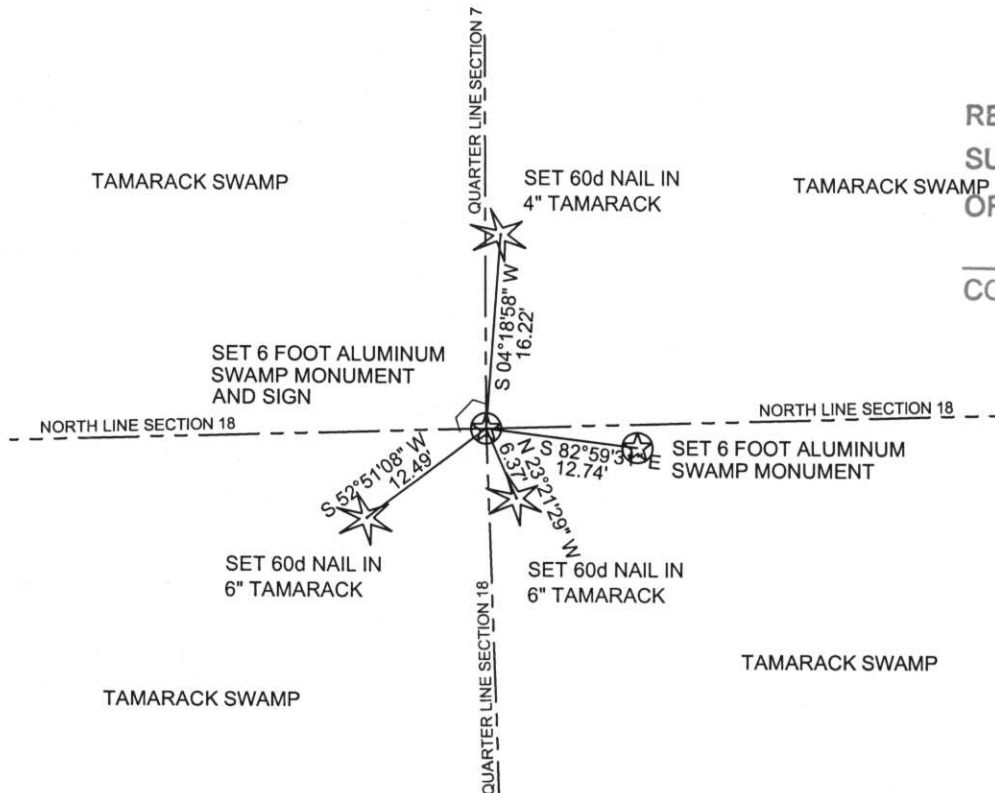
*Ronald K. Jacobson*  
Ronald Jacobson RLS 2059-008  
Registered Land Surveyor

COMPANY: Central Wisconsin Engineers & Architects  
5707 Schofield Ave.  
Weston, Wisconsin 54476  
(715) 359-9400

DATE: November 21, 2006

## TIE SKETCH:

SHOW MINIMUM OF FOUR (4) HORIZONTAL TIE DISTANCES TO FIXED WITNESS MONUMENTS.  
DESCRIBE ALL MONUMENTS FOUND OR SET. ALL DISTANCES SHOWN IN US SURVEY FEET.



RECEIVED BY LINCOLN COUNTY  
SURVEYOR THIS 22<sup>ND</sup> DAY  
OF November 20 06  
*Tony Dahl*  
COUNTY SURVEYOR

COORDINATES ARE REFERENCED TO LINCOLN COUNTY COORDINATE SYSTEM AS DEVELOPED BY THE WI. DEPARTMENT OF TRANSPORTATION AND ARE BASED ON GPS OBSERVATIONS TO CONTROL POINTS AS SUPPLIED BY LINCOLN COUNTY.

NOT TO SCALE  
BEARINGS REFERENCED TO LINCOLN COUNTY COORDINATE SYSTEM

I-3

**ELL  
YR**

IF THE  
LOCATION  
OF THE NEARBY  
MARKER IS  
ENDANGERED  
PLEASE CONTACT  
THE COUNTY  
SURVEYORS  
OFFICE









