

# LINCOLN COUNTY U.S. PUBLIC LAND TIE SHEET RECORD

SECTION 18  
TOWNSHIP 31N  
RANGE 4 E

183143  
NO.

LANDMARK

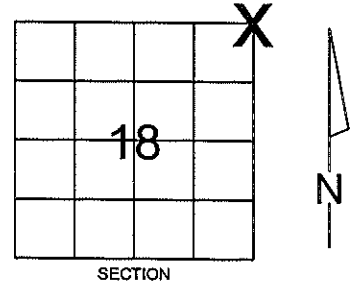
**CORNING**  
CITY, VILLAGE, TOWN

CORNER IDENTIFY: 6' ALUM. SWAMP MONUMENT

LINCOLN COUNTY COORDINATE: N: 122191.4935  
E: 306094.0400

DATE OF SURVEY: November 14, 2006  
SURVEY PARTY: Rutzen/Dahlvig

FOUND   
SET   
RE-SET   
RE-TIED



Description of monument found at this corner and if was accepted, state all evidence (material, testimonial, occupational, plats, records, other monuments) used as a basis for accepting. If not accepted or if nothing was found, state evidence used as basis for establishing location. If reestablished through lost corner proportionate methods, indicate all monuments, distances and directions used to establish.

## BASIS FOR MONUMENT LOCATION:

(DESCRIBE METHOD OF SURVEY AND CORNER AUTHENTICATION)

No evidence remained of the corner.  
Corner was set by double proportionate measurement.



CERTIFIED CORRECT:

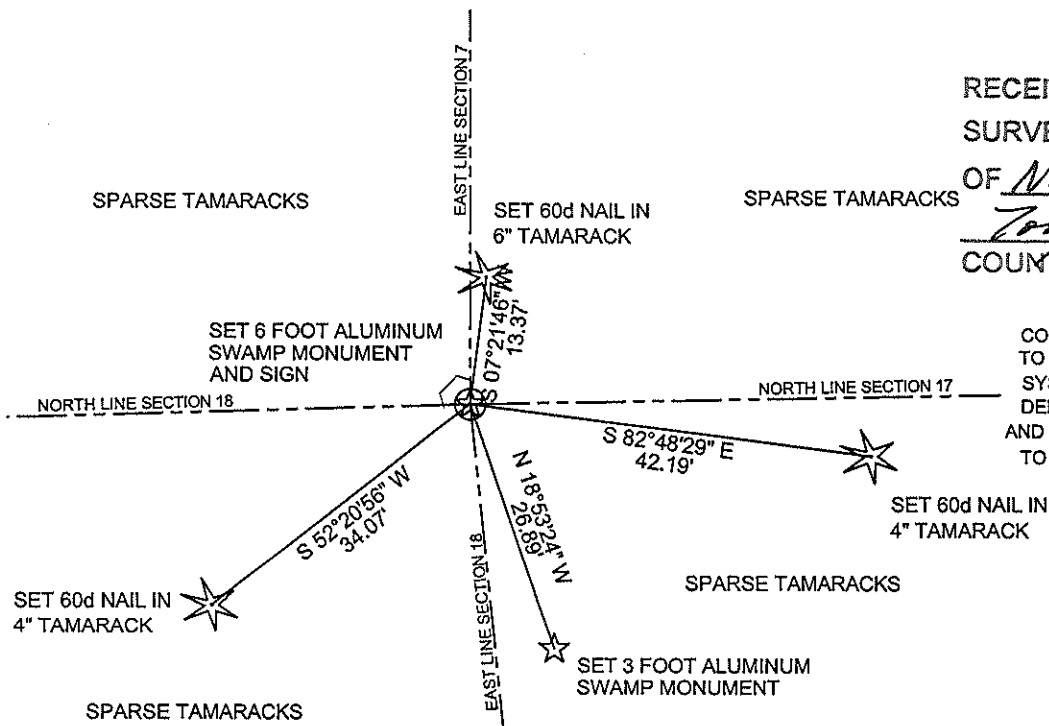
*Ronald K. Jacobson*  
Ronald Jacobson RLS 2059-008  
Registered Land Surveyor

DATE: November 21, 2006

COMPANY: Central Wisconsin Engineers & Architects  
5707 Schofield Ave.  
Weston, Wisconsin 54476  
(715) 359-9400

## TIE SKETCH:

SHOW MINIMUM OF FOUR (4) HORIZONTAL TIE DISTANCES TO FIXED WITNESS MONUMENTS.  
DESCRIBE ALL MONUMENTS FOUND OR SET. ALL DISTANCES SHOWN IN US SURVEY FEET.



RECEIVED BY LINCOLN COUNTY  
SURVEYOR THIS 22<sup>ND</sup> DAY  
OF November 20 06  
*Tom Dahlvig*  
COUNTY SURVEYOR

COORDINATES ARE REFERENCED TO LINCOLN COUNTY COORDINATE SYSTEM AS DEVELOPED BY THE WI. DEPARTMENT OF TRANSPORTATION AND ARE BASED ON GPS OBSERVATIONS TO CONTROL POINTS AS SUPPLIED BY LINCOLN COUNTY.

NOT TO SCALE  
BEARINGS REFERENCED TO LINCOLN COUNTY COORDINATE SYSTEM

I-5