

LINCOLN COUNTY U.S. PUBLIC LAND TIE SHEET RECORD

SECTION 8
TOWNSHIP 31N
RANGE 4 E

83141
NO.

LANDMARK

CORNING

CITY, VILLAGE, TOWN

CORNER INDENTITY: BERNSTEN MONUMENT

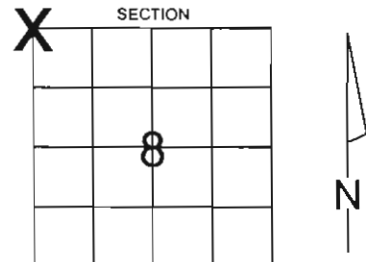
LINCOLN COUNTY COORDINATE: N: 127392.5352

E: 306110.0008

DATE OF SURVEY: October 31, 2006

SURVEY PARTY: Rutzen/Broton

- FOUND
SET
RE-SET
RE-TIED

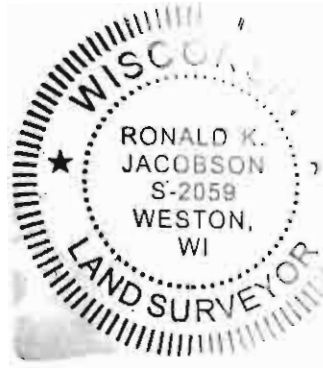


Description of monument found at this corner and if was accepted, state all evidence (material, testimonial, occupational, plats, records, other monuments) used as a basis for accepting. If not accepted or if nothing was found, state evidence used as basis for establishing location. If reestablished through lost corner proportionate methods, indicate all monuments, distances and directions used to establish.

BASIS FOR MONUMENT LOCATION:

(DESCRIBE METHOD OF SURVEY AND CORNER AUTHENTICATION)

No evidence at the corner was found. Monument was set by double proportionate measurement.



CERTIFIED CORRECT:

Ronald Jacobson

Ronald Jacobson RLS 2059-008

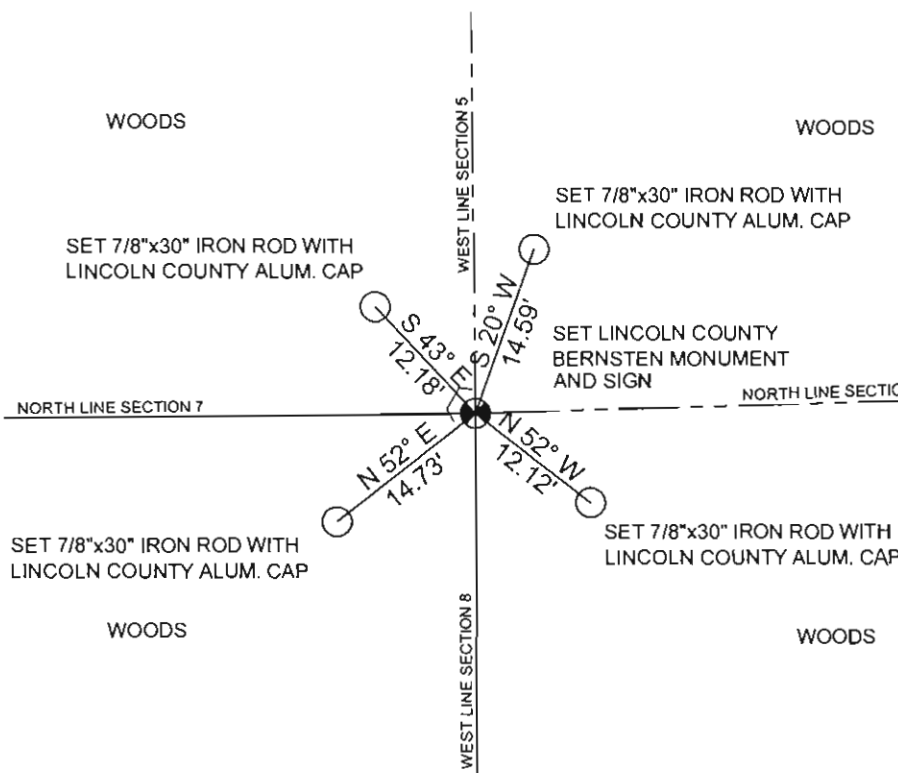
Registered Land Surveyor

DATE: November 17, 2006

COMPANY: Central Wisconsin Engineers & Architects
5707 Schofield Ave.
Weston, Wisconsin 54476
(715) 359-9400

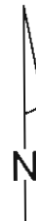
TIE SKETCH:

SHOW MINIMUM OF FOUR (4) HORIZONTAL TIE DISTANCES TO FIXED WITNESS MONUMENTS. DESCRIBE ALL MONUMENTS FOUND OR SET. ALL DISTANCES SHOWN IN US SURVEY FEET.



RECEIVED BY LINCOLN COUNTY
SURVEYOR THIS 22ND DAY
OF November 20 06
Tony Dader
COUNTY SURVEYOR

COORDINATES ARE REFERENCED TO LINCOLN COUNTY COORDINATE SYSTEM AS DEVELOPED BY THE WI. DEPARTMENT OF TRANSPORTATION AND ARE BASED ON GPS OBSERVATIONS TO CONTROL POINTS AS SUPPLIED BY LINCOLN COUNTY.



NOT TO SCALE
BEARINGS REFERENCED TO MAGNETIC NORTH









