

LINCOLN COUNTY U.S. PUBLIC LAND TIE SHEET RECORD

SECTION 4
TOWNSHIP 31N
RANGE 4 E

43145
NO.

CORNING

CITY, VILLAGE, TOWN

LANDMARK

CORNER INDENTITY: 6' ALUMINUM SWAMP MONUMENT

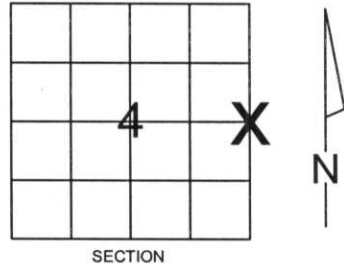
LINCOLN COUNTY COORDINATE: N: 130255.2263

E: 316829.3601

DATE OF SURVEY: November 15, 2006

SURVEY PARTY: Rutzen/Broton

FOUND
SET
RE-SET
RE-TIED



Description of monument found at this corner and if was accepted, state all evidence (material, testimonial, occupational, plats, records, other monuments) used as a basis for accepting. If not accepted or if nothing was found, state evidence used as basis for establishing location. If reestablished through lost corner proportionate methods, indicate all monuments, distances and directions used to establish.

BASIS FOR MONUMENT LOCATION:

(DESCRIBE METHOD OF SURVEY AND CORNER AUTHENTICATION)

No evidence remained of the corner.
Corner was set by single proportionate measurement.



CERTIFIED CORRECT:

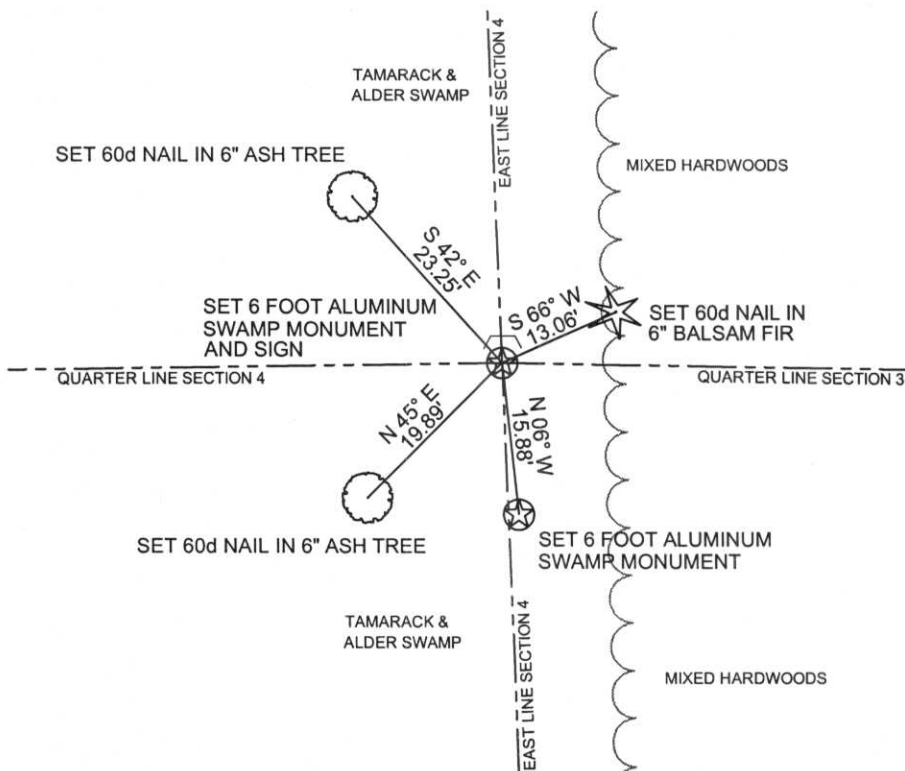
Ronald K. Jacobson
Ronald Jacobson RLS 2059-008
Registered Land Surveyor

DATE: November 21, 2006

COMPANY: Central Wisconsin Engineers & Architects
5707 Schofield Ave.
Weston, Wisconsin 54476
(715) 359-9400

TIE SKETCH:

SHOW MINIMUM OF FOUR (4) HORIZONTAL TIE DISTANCES TO FIXED WITNESS MONUMENTS.
DESCRIBE ALL MONUMENTS FOUND OR SET. ALL DISTANCES SHOWN IN US SURVEY FEET.



RECEIVED BY LINCOLN COUNTY
SURVEYOR THIS 22ND DAY
OF November 20 06
Tom Dahl
COUNTY SURVEYOR

COORDINATES ARE REFERENCED TO LINCOLN COUNTY COORDINATE SYSTEM AS DEVELOPED BY THE WI. DEPARTMENT OF TRANSPORTATION AND ARE BASED ON GPS OBSERVATIONS TO CONTROL POINTS AS SUPPLIED BY LINCOLN COUNTY.

Tom Dahl
N
NOT TO SCALE
BEARINGS REFERENCED TO MAGNETIC NORTH



LINCOLN COUNTY
SURVEY MARKER
1983







