

U.S. PUBLIC LAND SURVEY MONUMENT RECORD

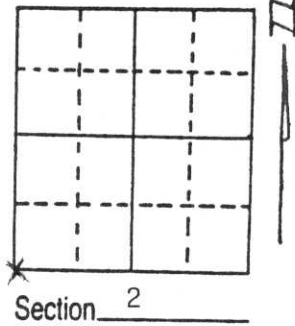
Note: This form is intended and designed to fulfill all requirements of Wisconsin Administrative Code, Chapter A-E 5.02, U.S. Public Land Survey Monument Record (3) (a) (b) (c) (d) (e) (f) (g) (h) (i). An additional sheet may be added if necessary to conform with said requirements.

(a) Corner location: Township 31 North

Range 4 East

Town/City/Village CORNING

County LINCOLN

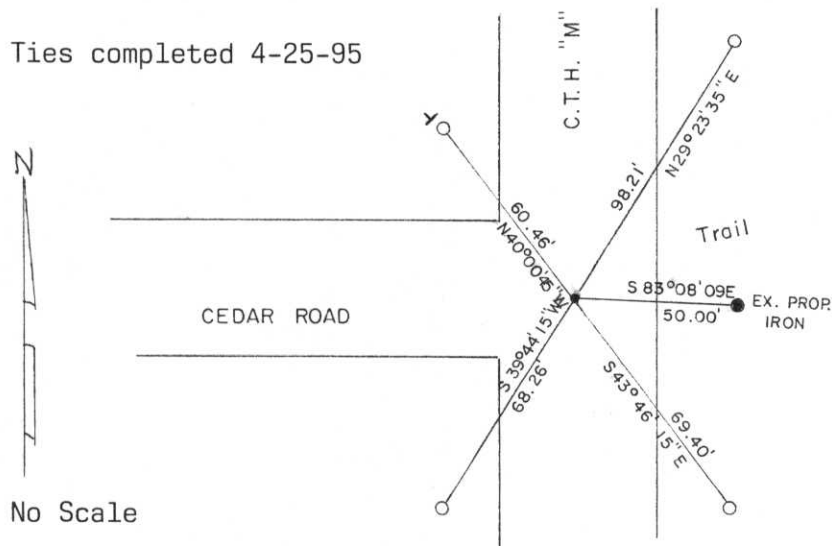


(b) (f) (g) (h) Description of monument found at this corner and if it was accepted, state all evidence (material, testimonial, occupational, plats, records, other monuments) used as a basis for accepting. If not accepted or if nothing was found, state evidence used as basis for establishing location. If reestablished through lost corner proportionate methods, indicate all monuments, distances and directions used to establish.

An existing PK Nail that was set by Wisconsin Valley Surveyors at the intersection of C.T.H. "M" and Cedar Road was tied into extensive survey work done in Sections 1 and 2 (T31N, R4E) and 35 and 36 (T32N, R4E). This was also used in survey work to the West. This position was also referenced to in survey work done by Krebs (RLS.471) in 1981. Location and nail excepted as best location for corner and was tied out.

RECEIVED AT LINCOLN COUNTY
COURT HOUSE THIS 27th DAY
OF April 1995
Pat Priebe
TAX DESCRIPTION OFFICE

(c) (d) (e) Plan view of corner with ties to at least 4 witness monuments. If in disagreement with previously established corner, show the distances between the two corners and also indicate the ties to the disputed corner.



All ties 7/8" x 30" Rebars unless otherwise noted. With the tie in the NW Quadrant having a Do Not Disturb Marker alongside. Bearing and distances to South 1/4 corner; S83°08'09"E, 2730.60' and to West 1/4 corner; N2°19'50"E, 2640.00'.



(i) I, Gary R. Krueger RLS NO.1619
(type or print name) certify that the corner location on this record was determined by me or under my direction and control and that this U.S. Public Land Survey Monument Record is correct and complete to the best of my knowledge and belief.

Gary R. Krueger 4.26.95
Signature Date

Index No. E-17





