

U.S. PUBLIC LAND SURVEY MONUMENT RECORD

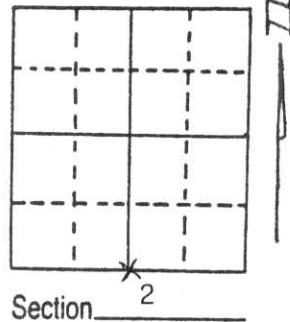
Note: This form is intended and designed to fulfill all requirements of Wisconsin Administrative Code, Chapter A-E 5.02, U.S. Public Land Survey Monument Record (3) (a) (b) (c) (d) (e) (f) (g) (h) (i). An additional sheet may be added if necessary to conform with said requirements.

(a) Corner location: Township 31 North

Range 4 East

Town/City/Village CORNING

County LINCOLN



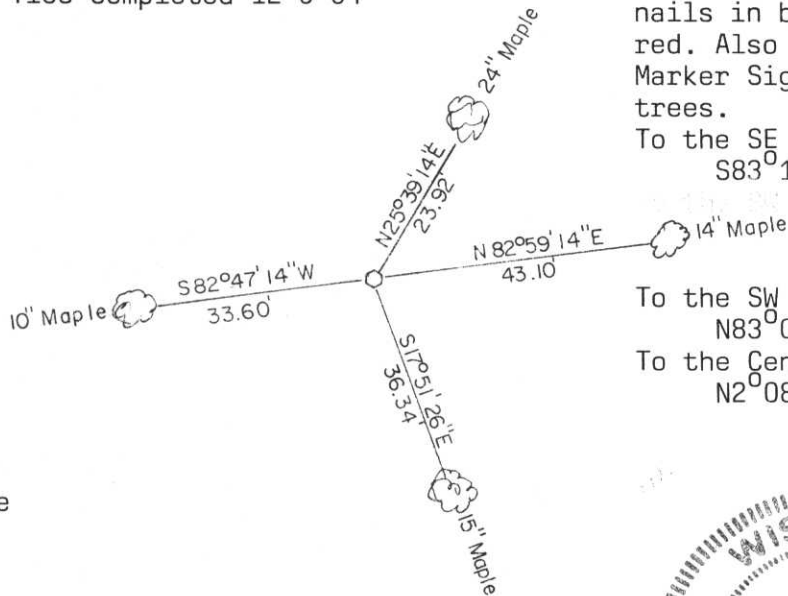
(b) (f) (g) (h) Description of monument found at this corner and if it was accepted, state all evidence (material, testimonial, occupational, plats, records, other monuments) used as a basis for accepting. If not accepted or if nothing was found, state evidence used as basis for establishing location. If reestablished through lost corner proportionate methods, indicate all monuments, distances and directions used to establish.

Found existing part of squared up wood post with angle iron alongside at this location. It fit existing old, down barb wire running to the East. Tied into extensive survey of Sections 1 and 2 (T31N, R4E) and Sections 35 and 36 (T32N, R4E) and held as best location of corner. Replaced with Berntsen Monument.

RECEIVED AT LINCOLN COUNTY
COURTHOUSE THIS 27th DAY
O. April 1995
Pat Pichel
TAX DESCRIPTION OFFICE

(c) (d) (e) Plan view of corner with ties to at least 4 witness monuments. If in disagreement with previously established corner, show the distances between the two corners and also indicate the ties to the disputed corner.

Ties completed 12-9-94



All ties to trees with PK nails in blazes and painted red. Also with Orange Survey Marker Signs on two of the trees.

To the SE Cor;
S83°12'26"E, 2738.36'

To the SW Cor;
N83°08'09"W, 2730.60'

To the Cen of Sec.
N2°08'23"E, 2605.69'

No Scale

(i) I, Gary R. Krueger RLS NO.1619

(type or print name) certify that the corner location on this record was determined by me or under my direction and control and that this U.S. Public Land Survey Monument Record is correct and complete to the best of my knowledge and belief.

Gary R. Krueger
Signature

4-26-95
Date



Index No. E-19



LINCOLN COUNTY
UNLAWFUL TO REMOVE

SURVEY

MARKER

COOPER



