

**LINCOLN COUNTY U.S. PUBLIC LAND  
SURVEY MONUMENT LOCATION RECORD**

Corner Location: Southwest Corner of Section 31  
 Monument Type: Found Berntsen Aluminum Monument  
 County Coordinate: N \_\_\_\_\_, E \_\_\_\_\_  
 Date of Survey: August 13, 2013 Datum: \_\_\_\_\_  
 Survey Party: J. Dick & J. Grande  
 Field Book: Loose Paper & Data File Page Number: \_\_\_\_\_

Found   
 Set   
 Re-set   
 Re-Tied

Section 31  
 Township 31 N  
 Range 4 E

CORNING  
 City, Village, Town

Y-1

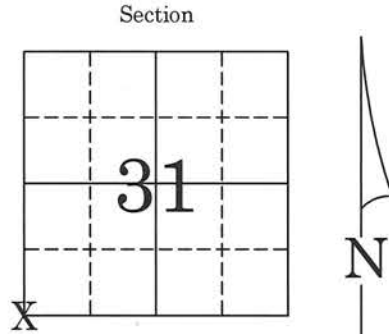
**BASIS FOR MONUMENT LOCATION:**

(Describe method of survey and corner authentication)

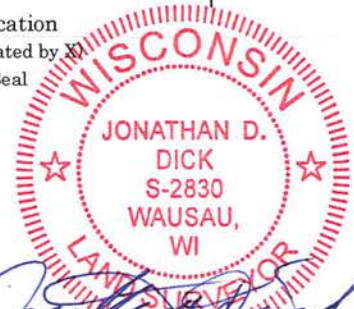
09/29/2006 - R. Jacobson RLS-2059 set monument based on found Marathon County corners, comparison of original notes, 1923 retracement notes from Marathon County, evidence of old wood post found, buried fencelines, and roadway evidence found in the field. Set four (4) Rebar as reference ties.

08/13/2013 - I found the Berntsen Aluminum Monument of record  $\pm 10''$  below the gravel roadway surface. I set one (1) new reference tie, NW, and re-measured the existing ties as shown in the sketch below.

RECEIVED BY LINCOLN COUNTY  
 SURVEYOR THIS 11<sup>TH</sup> DAY  
 OF November 20 13  
*Tom Wall*  
 COUNTY SURVEYOR



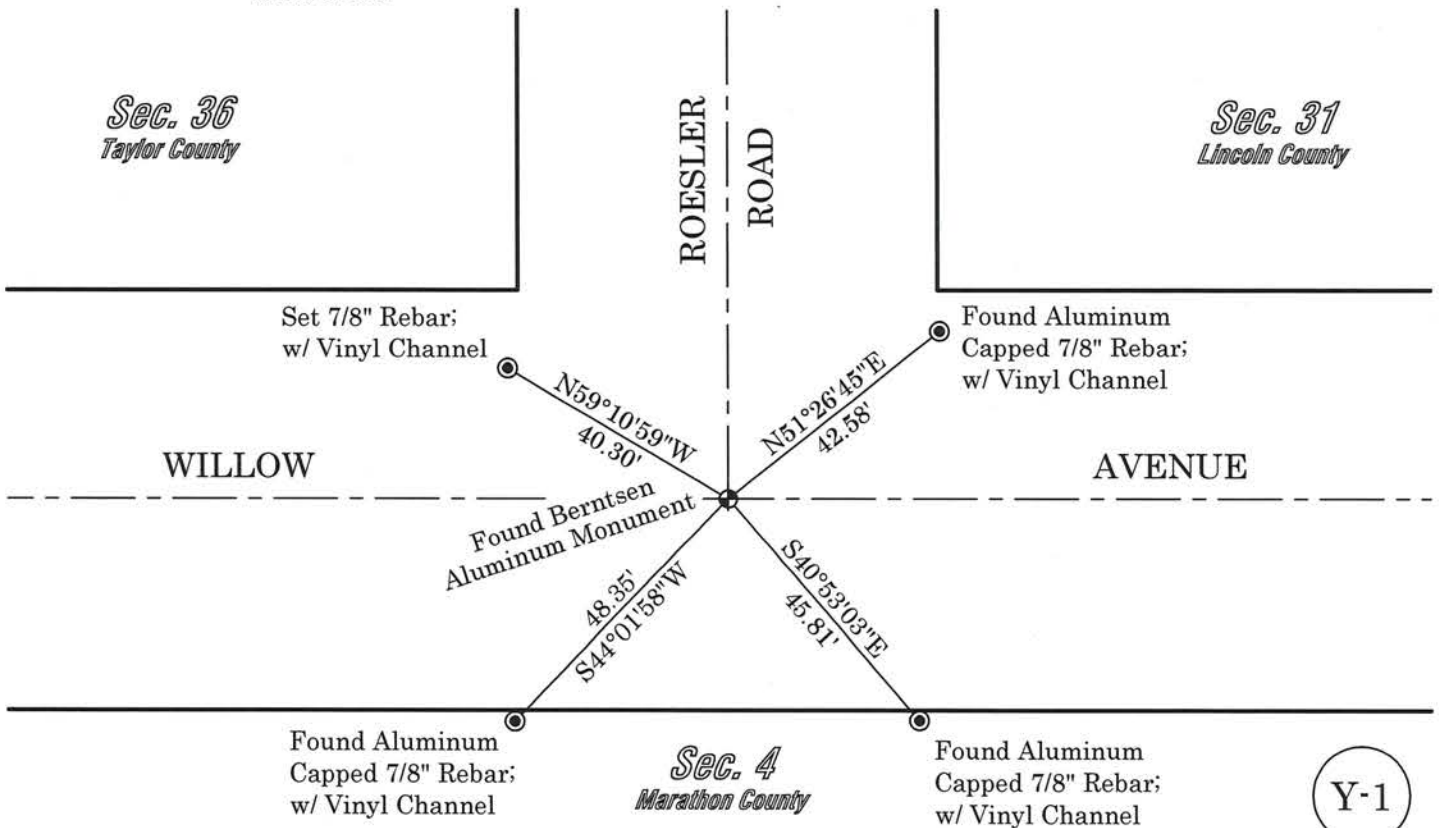
Location  
 (indicated by X)  
 Seal



Jonathan D. Dick, RLS-2830

Date: September 26, 2013

**TIE SKETCH:** Show minimum of four (4) horizontal tie distances to fixed witness monuments found or set.



Y-1

# LINCOLN COUNTY U.S. PUBLIC LAND TIE SHEET RECORD

SECTION 31  
TOWNSHIP 31N  
RANGE 4 E

313146

LANDMARK

**CORNING**  
CITY, VILLAGE, TOWN

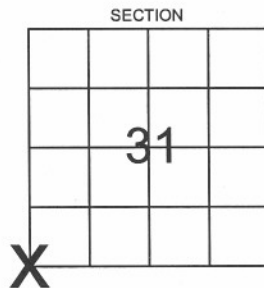
NO.

CORNER INDENTITY: BERNSTEN MONUMENT

LINCOLN COUNTY COORDINATE: N: 100713.8750  
E: 300842.5780

DATE OF SURVEY: September 28, 2006  
SURVEY PARTY: Rutzen/Jacobson/Rehfeldt

FOUND   
SET   
RE-SET   
RE-TIED

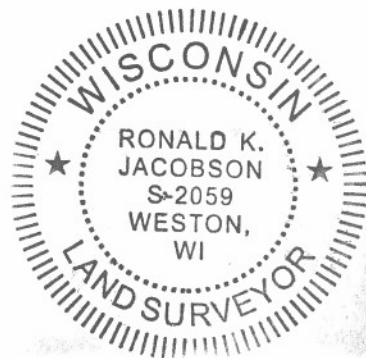


Description of monument found at this corner and if was accepted, state all evidence (material, testimonial, occupational, plats, records, other monuments) used as a basis for accepting. If not accepted or if nothing was found, state evidence used as basis for establishing location. If reestablished through lost corner proportionate methods, indicate all monuments, distances and directions used to establish.

## BASIS FOR MONUMENT LOCATION:

(DESCRIBE METHOD OF SURVEY AND CORNER AUTHENTICATION)

Monument was set based on found Marathon County corners, comparison of original notes, 1923 retracement notes from Marathon County, evidence of old wood post found, buried fencelines, and roadway evidence found in the field.



RECEIVED BY LINCOLN COUNTY  
SURVEYOR THIS 29<sup>TH</sup> DAY  
OF September 20 06  
Jerry Dahl  
COUNTY SURVEYOR

CERTIFIED CORRECT:

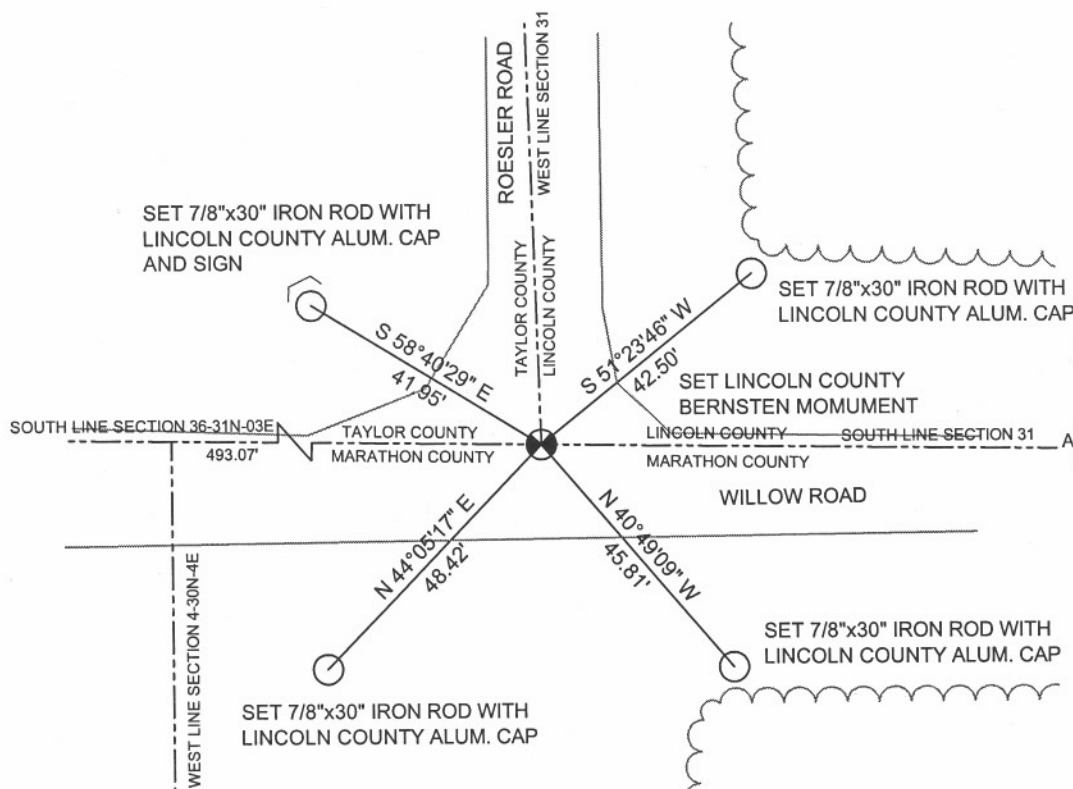
Ronald Jacobson  
Ronald Jacobson RLS 2059-008  
Registered Land Surveyor

COMPANY: Central Wisconsin Engineers & Architects  
5707 Schofield Ave.  
Weston, Wisconsin 54476  
(715) 359-3400

DATE: September 29, 2006

## TIE SKETCH:

SHOW MINIMUM OF FOUR (4) HORIZONTAL TIE DISTANCES TO FIXED WITNESS MONUMENTS.  
DESCRIBE ALL MONUMENTS FOUND OR SET. ALL DISTANCES SHOWN IN US SURVEY FEET.



COORDINATES ARE REFERENCED TO LINCOLN COUNTY COORDINATE SYSTEM AS DEVELOPED BY THE WI. DEPARTMENT OF TRANSPORTATION AND ARE BASED ON GPS OBSERVATIONS TO CONTROL POINTS AS SUPPLIED BY LINCOLN COUNTY.

NOT TO SCALE  
BEARINGS REFERENCED TO LINCOLN COUNTY COORDINATE SYSTEM













541250





