

# LINCOLN COUNTY U.S. PUBLIC LAND TIE SHEET RECORD

SECTION 18  
TOWNSHIP 31N  
RANGE 4 E

183144  
NO.

LANDMARK

CORNING  
CITY, VILLAGE, TOWN

CORNER INDENTITY: 1" IRON PIPE

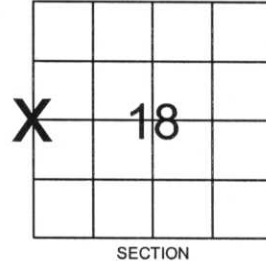
LINCOLN COUNTY COORDINATE: N: 119374.2630

E: 300613.3480

DATE OF SURVEY: October 30, 2006

SURVEY PARTY: Rutzen/Broten

FOUND   
SET   
RE-SET   
RE-TIED

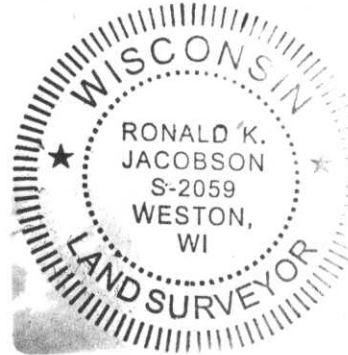


Description of monument found at this corner and if was accepted, state all evidence (material, testimonial, occupational, plats, records, other monuments) used as a basis for accepting. If not accepted or if nothing was found, state evidence used as basis for establishing location. If reestablished through lost corner proportionate methods, indicate all monuments, distances and directions used to establish.

## BASIS FOR MONUMENT LOCATION:

(DESCRIBE METHOD OF SURVEY AND CORNER AUTHENTICATION)

Iron pipe was held based on fence line and parcel line evidence.



CERTIFIED CORRECT:

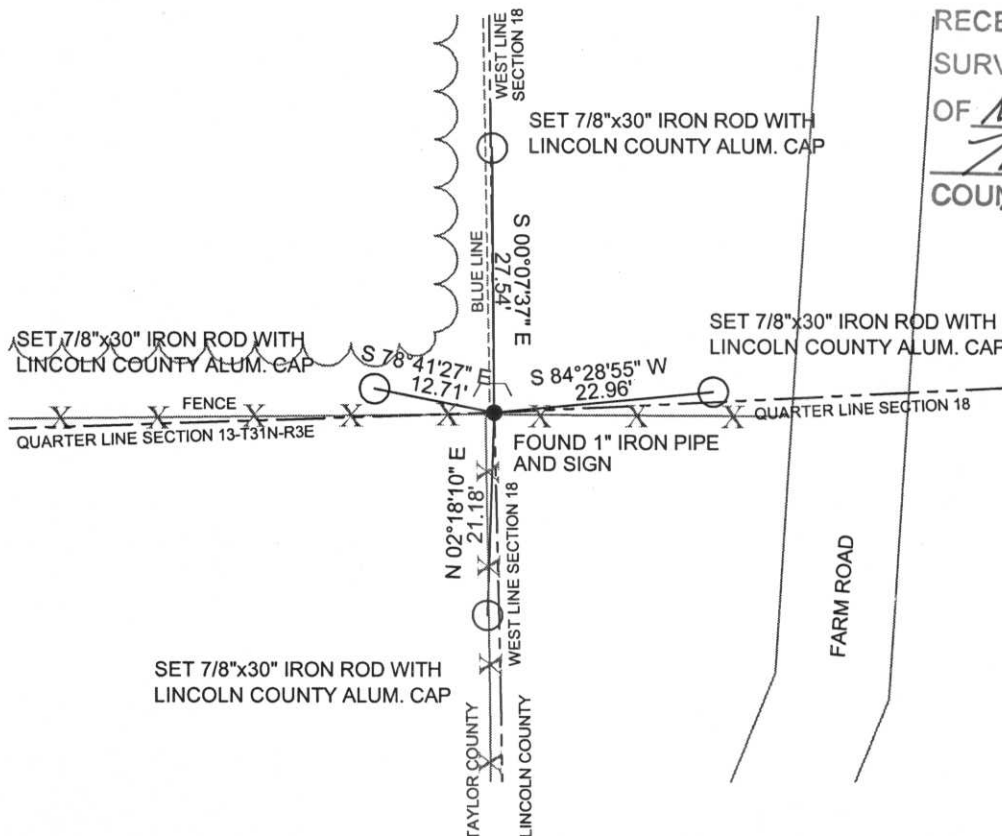
*Ronald Jacobson*  
Ronald Jacobson RLS 2059-008  
Registered Land Surveyor

DATE: November 3, 2006

COMPANY: Central Wisconsin Engineers & Architects  
5707 Schofield Ave.  
Weston, Wisconsin 54476  
(715) 359-9400

## TIE SKETCH:

SHOW MINIMUM OF FOUR (4) HORIZONTAL TIE DISTANCES TO FIXED WITNESS MONUMENTS. DESCRIBE ALL MONUMENTS FOUND OR SET. ALL DISTANCES SHOWN IN US SURVEY FEET.



RECEIVED BY LINCOLN COUNTY  
SURVEYOR THIS 8<sup>TH</sup> DAY  
OF November 20 06  
*Troy Dalk*  
COUNTY SURVEYOR

COORDINATES ARE REFERENCED TO LINCOLN COUNTY COORDINATE SYSTEM AS DEVELOPED BY THE WI. DEPARTMENT OF TRANSPORTATION AND ARE BASED ON GPS OBSERVATIONS TO CONTROL POINTS AS SUPPLIED BY LINCOLN COUNTY.



NOT TO SCALE  
BEARINGS REFERENCED TO LINCOLN COUNTY COORDINATE SYSTEM





AWEA  
CENTRAL  
WISCONSIN  
ENGINEERS  
ARCHITECTS

715-359-9

www.cw6r.com





