

# LINCOLN COUNTY U.S. PUBLIC LAND TIE SHEET RECORD

SECTION 18  
TOWNSHIP 31N  
RANGE 4 E

183141  
NO.

LANDMARK

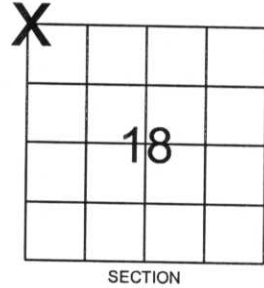
CORNING  
CITY, VILLAGE, TOWN

CORNER INDENTITY: 1" IRON PIPE

LINCOLN COUNTY COORDINATE: N: 122024.3924  
E: 300594.5561

DATE OF SURVEY: October 31, 2006  
SURVEY PARTY: Rutzen/Broten

FOUND   
SET   
RE-SET   
RE-TIED



Description of monument found at this corner and if was accepted, state all evidence (material, testimonial, occupational, plats, records, other monuments) used as a basis for accepting. If not accepted or if nothing was found, state evidence used as basis for establishing location. If reestablished through lost corner proportionate methods, indicate all monuments, distances and directions used to establish.

## BASIS FOR MONUMENT LOCATION:

(DESCRIBE METHOD OF SURVEY AND CORNER AUTHENTICATION)

Found wood post and iron pipe at the base of wood post.  
Held the wood post for corner.



CERTIFIED CORRECT:

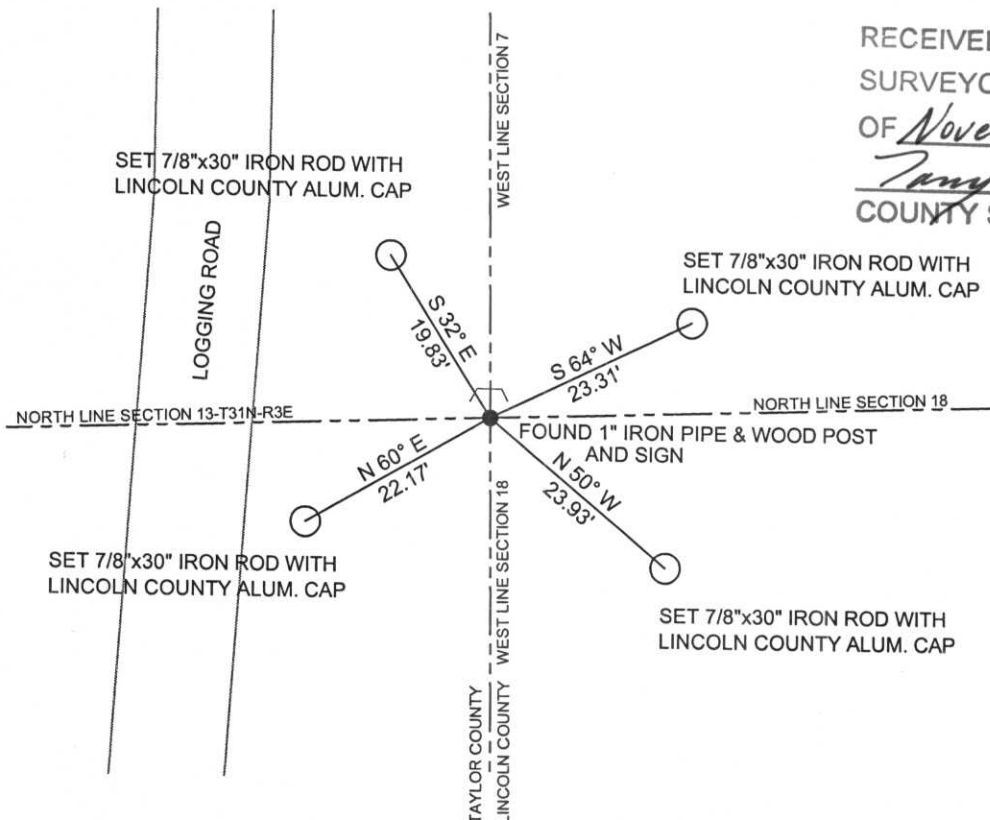
*Ronald Jacobson*  
Ronald Jacobson RLS 2059-008  
Registered Land Surveyor

COMPANY: Central Wisconsin Engineers & Architects  
5707 Schofield Ave.  
Weston, Wisconsin 54476  
(715) 359-9400

DATE: November 3, 2006

## TIE SKETCH:

SHOW MINIMUM OF FOUR (4) HORIZONTAL TIE DISTANCES TO FIXED WITNESS MONUMENTS.  
DESCRIBE ALL MONUMENTS FOUND OR SET. ALL DISTANCES SHOWN IN US SURVEY FEET.



RECEIVED BY LINCOLN COUNTY  
SURVEYOR THIS 8TH DAY  
OF November 20 06  
*Tony Dallen*  
COUNTY SURVEYOR

COORDINATES ARE REFERENCED TO LINCOLN COUNTY COORDINATE SYSTEM AS DEVELOPED BY THE WI. DEPARTMENT OF TRANSPORTATION AND ARE BASED ON GPS OBSERVATIONS TO CONTROL POINTS AS SUPPLIED BY LINCOLN COUNTY.

*N*  
NOT TO SCALE  
BEARINGS REFERENCED TO MAGNETIC NORTH









DO NOT  
DISTURB  
NEARBY

**SMURRVEYR**

IF YOU  
SEE THIS MARKER IN  
A SENSITIVE AREA  
PLEASE CONTACT  
THE LAND MANAGER  
FOR MORE INFORMATION



















