

# TAYLOR COUNTY U.S. PUBLIC LAND SURVEY MONUMENT RECORD

## Original Corner Information

Original corner monument: post  
 Set by: William E. Daugherty  
 Year: 1861

### Bearing Trees

Species:	hemlock	hemlock
Diameter:	10"	9"
Bearings:	N 61° W	S 65° E
Distance:	12 links	9 links

### Original Evidence Found – Subsequent Corner Restorations

(Include year of search, name of surveyor, evidence found and monument set.)  
 3-6-1987(survey date 1970), W.H. Stuth, "by others"

### Basis For Monument Location

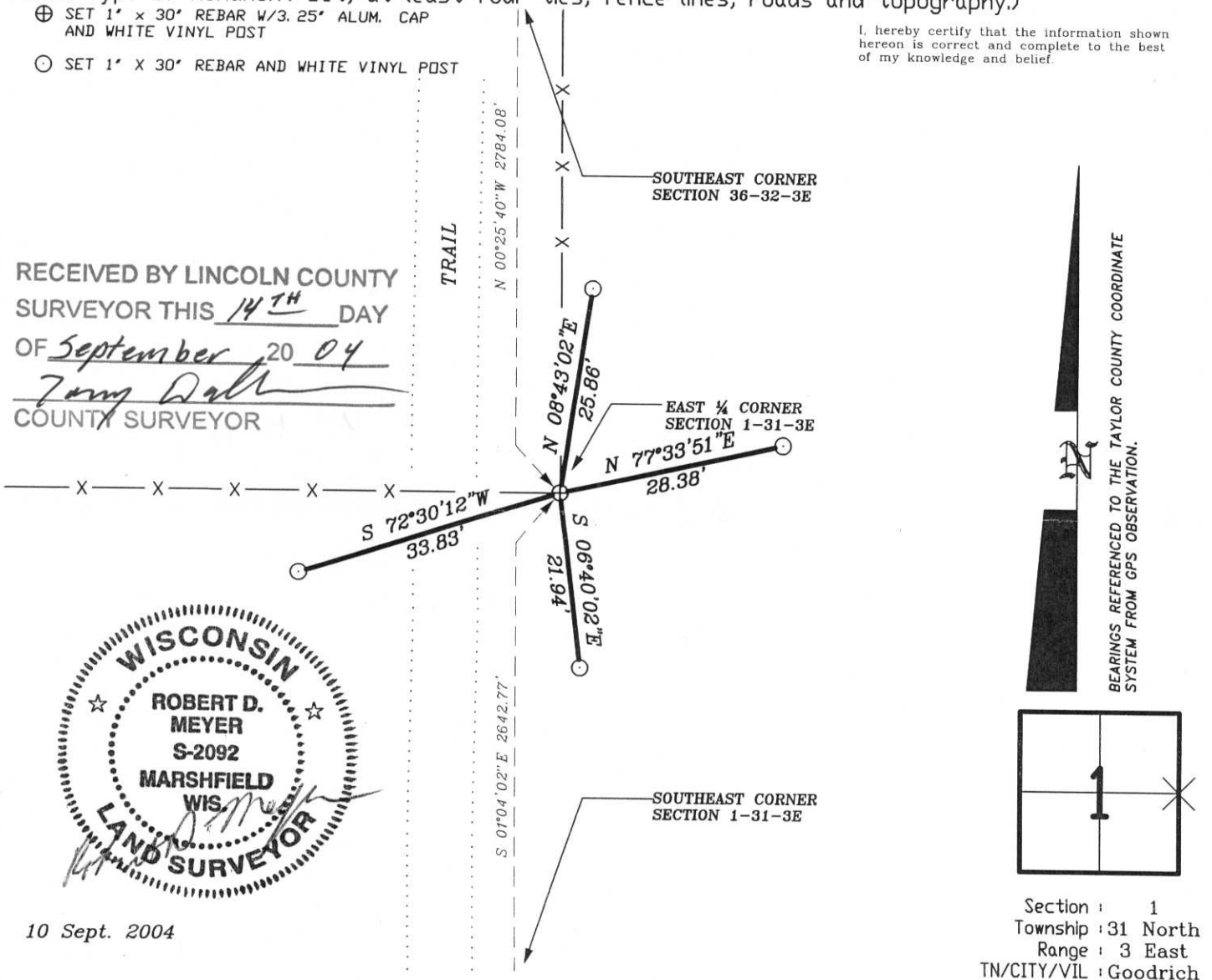
Accepted a found 1-1/2"(o.d.) iron pipe with a coupling at an old fence intersection to North and West as the best available evidence of this corner's location. Rod Kropp (life long resident) stated that the fences have been in place since he was a young boy. Kropp went on to say the fences had been in place for some time before he helped maintain them as a boy.

### Tie Sketch

( Show type of monument set, at least four ties, fence lines, roads and topography.)

- ⊕ SET 1' x 30' REBAR W/3.25' ALUM. CAP AND WHITE VINYL POST
- SET 1' x 30' REBAR AND WHITE VINYL POST

I, hereby certify that the information shown hereon is correct and complete to the best of my knowledge and belief.



RECEIVED BY LINCOLN COUNTY  
 SURVEYOR THIS 14<sup>TH</sup> DAY  
 OF September 20 04  
*Tommy Dalt*  
 COUNTY SURVEYOR



10 Sept. 2004

Section : 1  
 Township : 31 North  
 Range : 3 East  
 TN/CITY/VIL : Goodrich