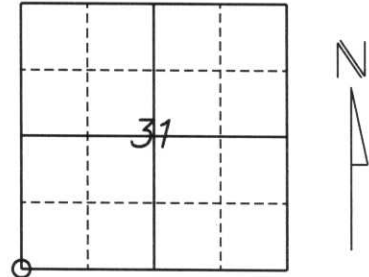


U.S. PUBLIC LAND SURVEY MONUMENT RECORD

Note: This form is intended and designed to fulfill all requirements of Wisconsin Administrative Code, Chapter A-E 5.02, U.S. Public Land Survey Monument Record (3) (a) (b) (c) (d) (e) (f) (g) (h) (l). An additional sheet may be added if necessary to conform with said requirements.

(a) Corner location: Township 35 North
 Range 8 East
 Town/City/Village HARRISON
 County Lincoln



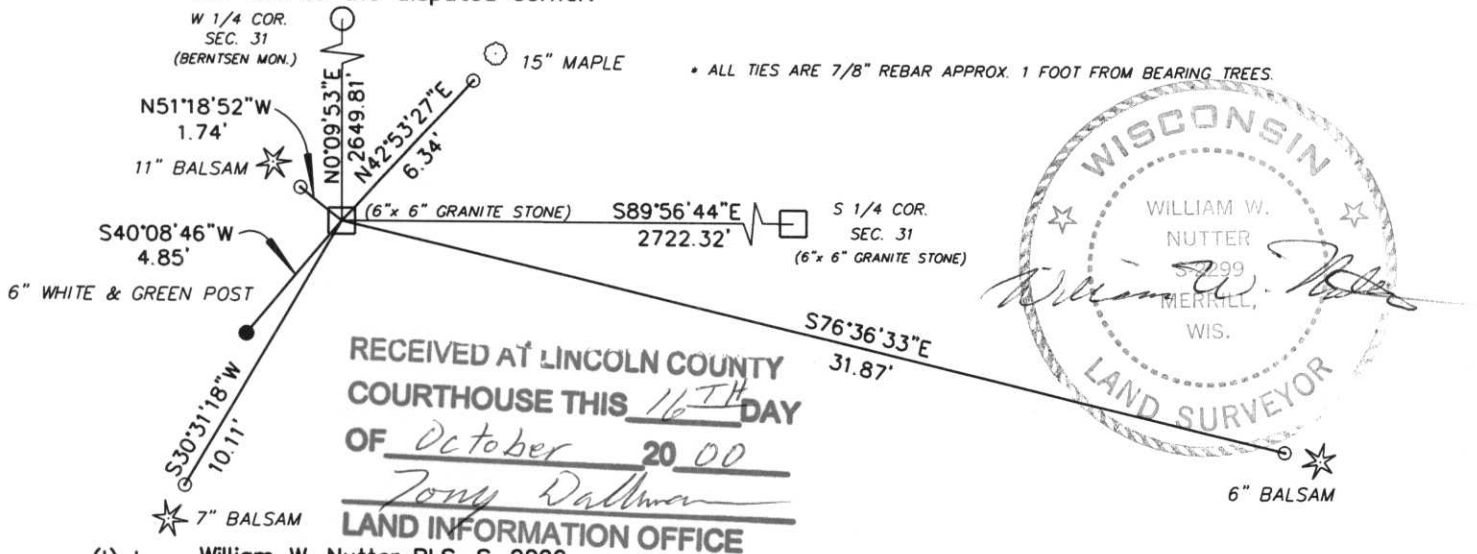
Section 31

(b) (f) (g) (h) Description of monument found at this corner and if it was accepted, state all evidence (material, testimonial, occupational, plats, records, other monuments) used as a basis for accepting. If not accepted or if nothing was found, state evidence used as a basis for establishing location. If reestablished through lost corner proportionate methods, indicate all monuments, distances and directions used to establish.

ORIGINAL CORNER SET BY UNKNOWN IN 1865, A WOODEN CORNER POST
 WITH BEARING TREES:
 11" BIRCH S38°E 40 LINKS
 10" WHITE PINE S88°W 8 LINKS
 18" HEMLOCK N27°W 64 LINKS
 11" BIRCH N39°E 56 LINKS

FOUND 6"x 6" GRANITE STONE SET BY UNKNOWN NEXT TO A WHITE AND GREEN POST.
 SET (4) 7/8" REBARS AS TIES TO MONUMENT.

(c) (d) (e) Plan view of corner with ties to at least 4 witness monuments. If in disagreement with previously established corner, show the distances between the two corners and also indicate the ties to the disputed corner.



(l) I, William W. Nutter RLS, S-2299
 (type or print name) certify that the corner location on this record was determined by me or under my direction and control and that this U.S. Public Land Survey Monument Record is correct and complete to the best of my knowledge and belief.

William W. Nutter Signature 10-16-00 Date