

U.S. PUBLIC LAND SURVEY MONUMENT RECORD

NOTE: This form is intended and designed to fulfill all requirements of Wisconsin Administrative Code, Chapter A-E 7.08 U.S. Public Land Survey Monument Record. An additional sheet may be added if necessary to conform with said requirements.

CORNER LOCATION:

Southeast Corner of Section 33
Township 35 North, Range 7 East of the 4th P.M.
Town of King, Lincoln County, Wisconsin

INDEX NUMBER:

Y-9

LINCOLN COUNTY COORDINATES:
(NAD83/2011)

N: 227,041.807
E: 407,334.458

6	5	4	3	2	1
7	8	9	10	11	12
18	17	16	15	14	13
19	20	21	22	23	24
30	29	28	27	26	25
31	32	33	34	35	36

●
T35N - R7E

HISTORY OF ORIGINAL CORNER:

ORIGINAL SURVEYOR: James M. Marsh	
DATE OF SURVEY: August 1851	
ORIGINAL ACCESSORIES: 12" Hemlock, S60°E, 24 lks	10" Aspen, N74°W, 16 lks
10" Aspen, S25°W, 21 lks	11" Birch, N57°E, 24 lks

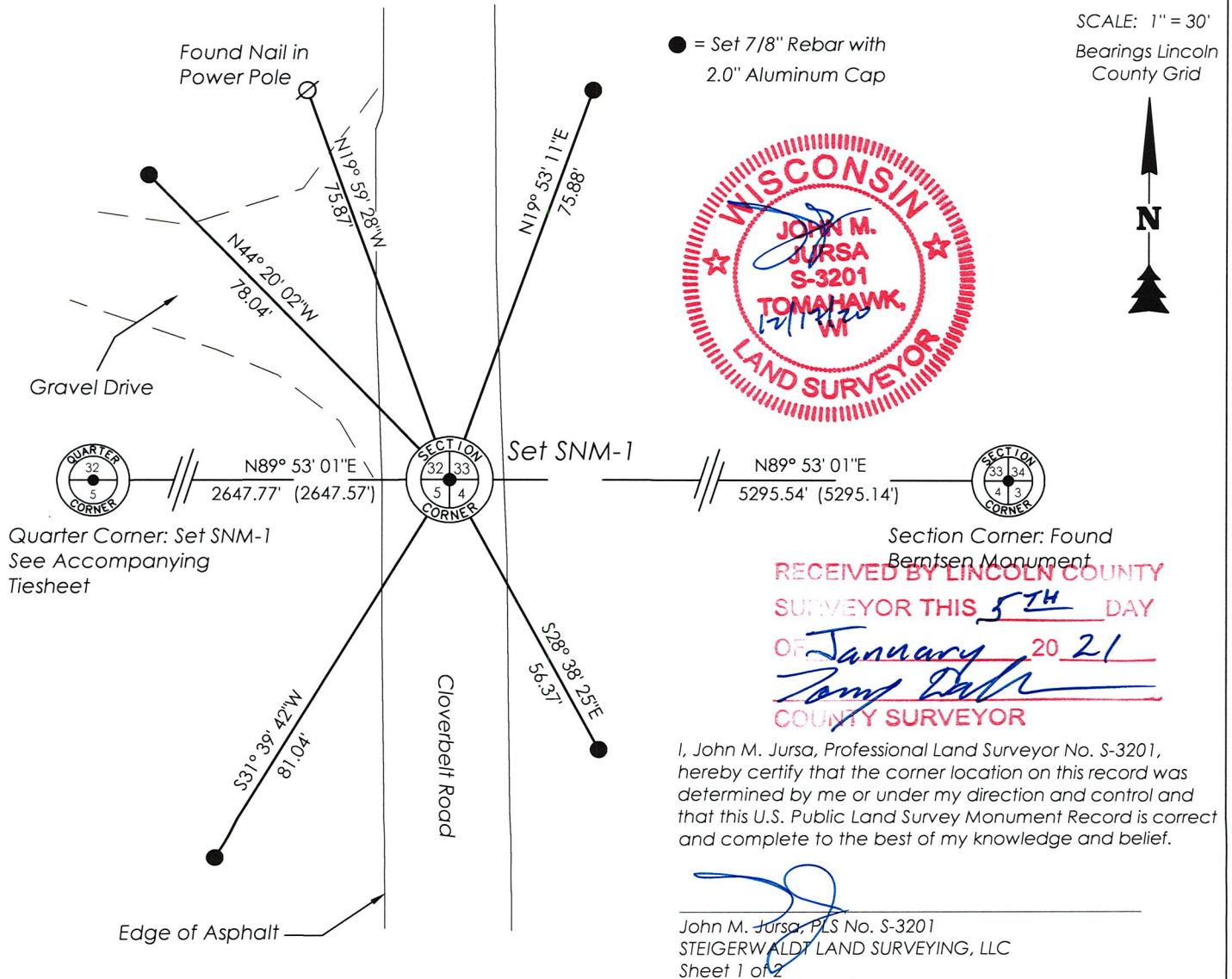
DESCRIPTION OF MONUMENT FOUND AT THIS CORNER AND IF IT WAS ACCEPTED, STATE ALL EVIDENCE (MATERIAL, TESTIMONIAL, OCCUPATIONAL, PLATS, RECORDS, OTHER MONUMENTS) USED AS A BASIS FOR ACCEPTING. IF NOT ACCEPTED OR IF NOTHING WAS FOUND, STATE EVIDENCE USED AS BASIS FOR ESTABLISHING LOCATION. IF RE-ESTABLISHED THROUGH LOST CORNER PROPORTIONATE METHODS, INDICATE ALL MONUMENTS, DISTANCES AND DIRECTIONS USED TO ESTABLISH. INDICATE TYPE OF MONUMENT AND SIGN POST FOUND OR SET.

5/26/1982 - Lester J. Schmit did not find evidence of corner. He proportioned the position based upon the found monuments of the South Quarter of Section 32 & of Southeast Corner of Section 33. He set a Berntsen Monument at the proportioned distance and established ties.

9/12/1988 - Lester J. Schmit did not find monument nor any ties from previous tiesheet. He set a new Berntsen Monument based upon previous survey work in area and established new ties.

12/9/2020 - Visited corner location and did not find evidence of monument or ties. I found what I believed to be two trees and a nail from Schmit's 1982 tiesheet but they did not match between each other very well nor did they match the published coordinates. Since the 1988 tiesheet stated that no ties were found from 1982 I determined that the best position should be ascertained by single proportion based upon the distances shown from the 1982 tiesheet. I set an SNM-1 at this position and set out new ties as shown below.

PLAN VIEW OF CORNER WITH TIES TO AT LEAST 4 WITNESS MONUMENTS. IF IN DISAGREEMENT WITH PREVIOUSLY ESTABLISHED CORNER, SHOW THE DISTANCES BETWEEN THE TWO CORNERS AND ALSO INDICATE THE TIES TO THE DISPUTED.



Y-9

U.S. PUBLIC LAND SURVEY MONUMENT RECORD

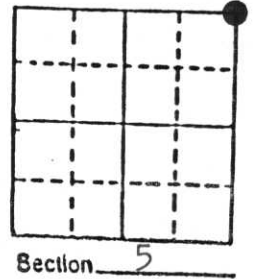
Note: This form is intended and designed to fulfill all requirements of Wisconsin Administrative Code, Chapter A-E 5.02, U.S. Public Land Survey Monument Record (3) (a) (b) (c) (d) (e) (f) (g) (h) (i). An additional sheet may be added if necessary to conform with said requirements.

(a) Corner location: Township 34 North

Range 7 East

Town Skanawan

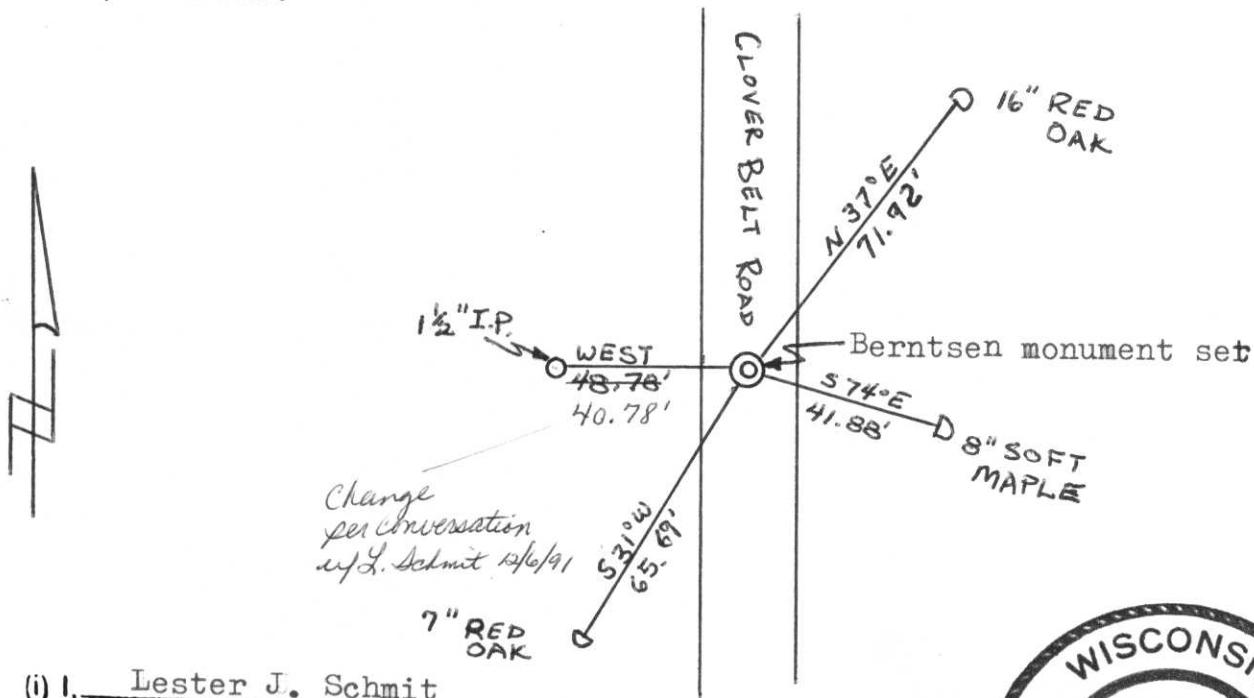
County Lincoln



b) (f) (g) (h) Description of monument found at this corner and if it was accepted, state all evidence (material, testimonial, occupational, plats, records, other monuments) used as a basis for accepting. If not accepted or if nothing was found, state evidence used as basis for establishing location. If reestablished through lost corner proportionate methods, indicate all monuments, distances and directions used to establish.

Road construction during the summer of 1988 removed the Berntsen monument originally marking the corner location. During the road work all of the witnesses to this corner were removed also. From previous survey work done in this area I was able to reestablish the corner's original location. Set a new Berntsen monument for the corner.

c) (d) (e) Plan view of corner with ties to at least 4 witness monuments. If in disagreement with previously established corner, show the distances between the two corners and also indicate the ties to the disputed corner.



(i) I, Lester J. Schmit

(Type or print name) certify that the corner location on this record was determined by me or under my direction and control and that this U.S. Public Land Survey Monument Record is correct and complete to the best of my knowledge and belief.

Lester J. Schmit
Signature

12 Sep 88
Date



Index No. A-9

CERTIFIED LAND CORNER RESTORATION

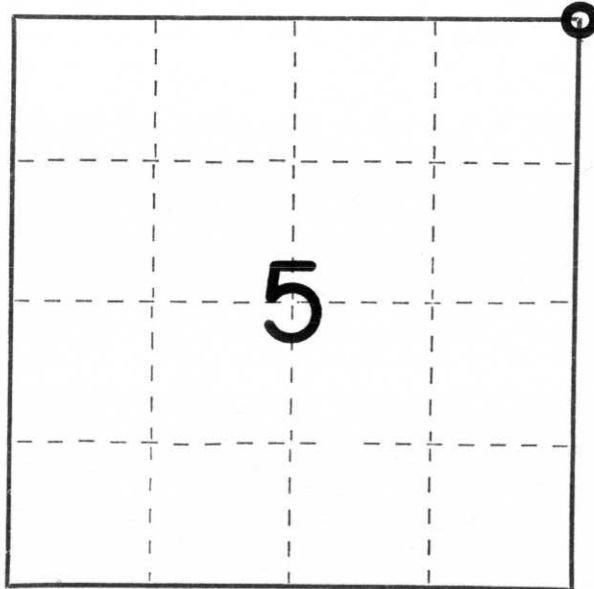
Index No. A-9

State of Wisconsin }
County of Lincoln } ss.

I Lester J. Schmit, do hereby certify that on the 26th day of May, 1982, I ~~found evidence of the~~ I set the Northeast corner of Section 5 Township 34, North, Range 7 East, Fourth, Principal Meridian, as described hereon; and that from this evidence I established a new monument and accessories as described hereon to perpetuate the original location of this corner.

Resident witnesses:

.....
.....
.....

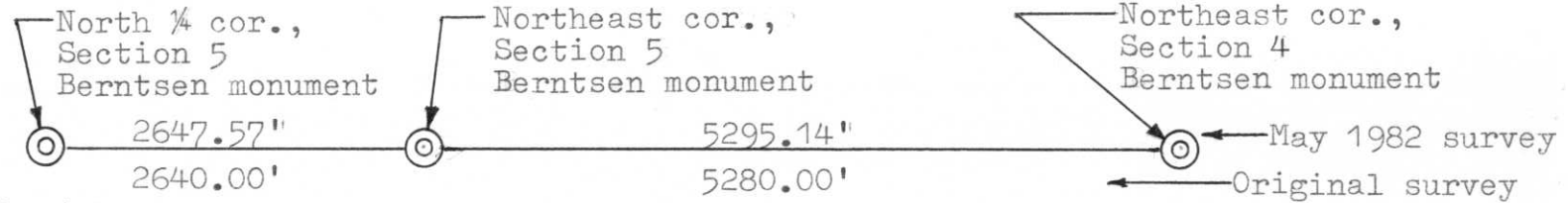


○ = Corner monument restored.

History of original corner establishment:

Surveyor: Jas. M. Marsh
Date: 16 August 1851
Monumentation: Wood Post
Witnesses: Birch 10", S 45° E, 10 links
Tamarac 9", S 55° W, 36 links
Tamarac 8", N 66° W, 20 links
Birch 10", N 18° E, 10 links

Description of corner evidence found: Found no evidence of the corner location so I single proportioned the location between the North 1/4 corner of Section 5 and the Northeast corner of Section 4 as shown below.



Description of monument and accessories I established to perpetuate the ~~original~~ location of this corner.

Set 30" Berntsen monument for corner 4" below surface and 1' west of the centreline of Tower Road.

Witnesses: P.K. nail in 12" Red Oak, N 15° E, 101.03'
P.K. nail in 5" White Birch, S 69° E, 27.77"
P.K. nail in 14" Red Oak, N 72° W, 95.37'
P.K. nail in power pole (no number), N 20° W, 76.24'

Dated at Tomahawk, Wis., this 7th day of June, 1982.

Signature Lester J. Schmit Title Land Surveyor Registration No. S-1192
(County Surveyor, Registered Land Surveyor, or other duly authorized official)

Office of Register of Deeds, County of....., I hereby certify that the within instrument was filed in this office for record on the..... day of....., 19..... at..... o'clock..... M.

.....
(Register of Deeds)

By..... Deputy



31 4:18 PM

R 100



31 4:22 PM



31 4:23 PM