

U.S. PUBLIC LAND SURVEY MONUMENT RECORD

NOTE: This form is intended and designed to fulfill all requirements of Wisconsin Administrative Code, Chapter A-E 7.08 U.S. Public Land Survey Monument Record. An additional sheet may be added if necessary to conform with said requirements.

CORNER LOCATION:

South Quarter Corner of Section 32
Township 35 North, Range 7 East of the 4th P.M.
Town of King, Lincoln County, Wisconsin

INDEX NUMBER:

Y-7

LINCOLN COUNTY COORDINATES:

(NAD83/2011)

N: 227,036.429

E: 404,686.693

6	5	4	3	2	1
7	8	9	10	11	12
18	17	16	15	14	13
19	20	21	22	23	24
30	29	28	27	26	25
31	32	33	34	35	36

●
T35N - R7E

HISTORY OF ORIGINAL CORNER:

ORIGINAL SURVEYOR: James M. Marsh
DATE OF SURVEY: August 1851
ORIGINAL ACCESSORIES: 11" Birch, S20°E, 22 lks 10" Maple, N44°W, 23 lks
12" Maple, S8°W, 11 lks 8" Birch, N71°E, 27 lks

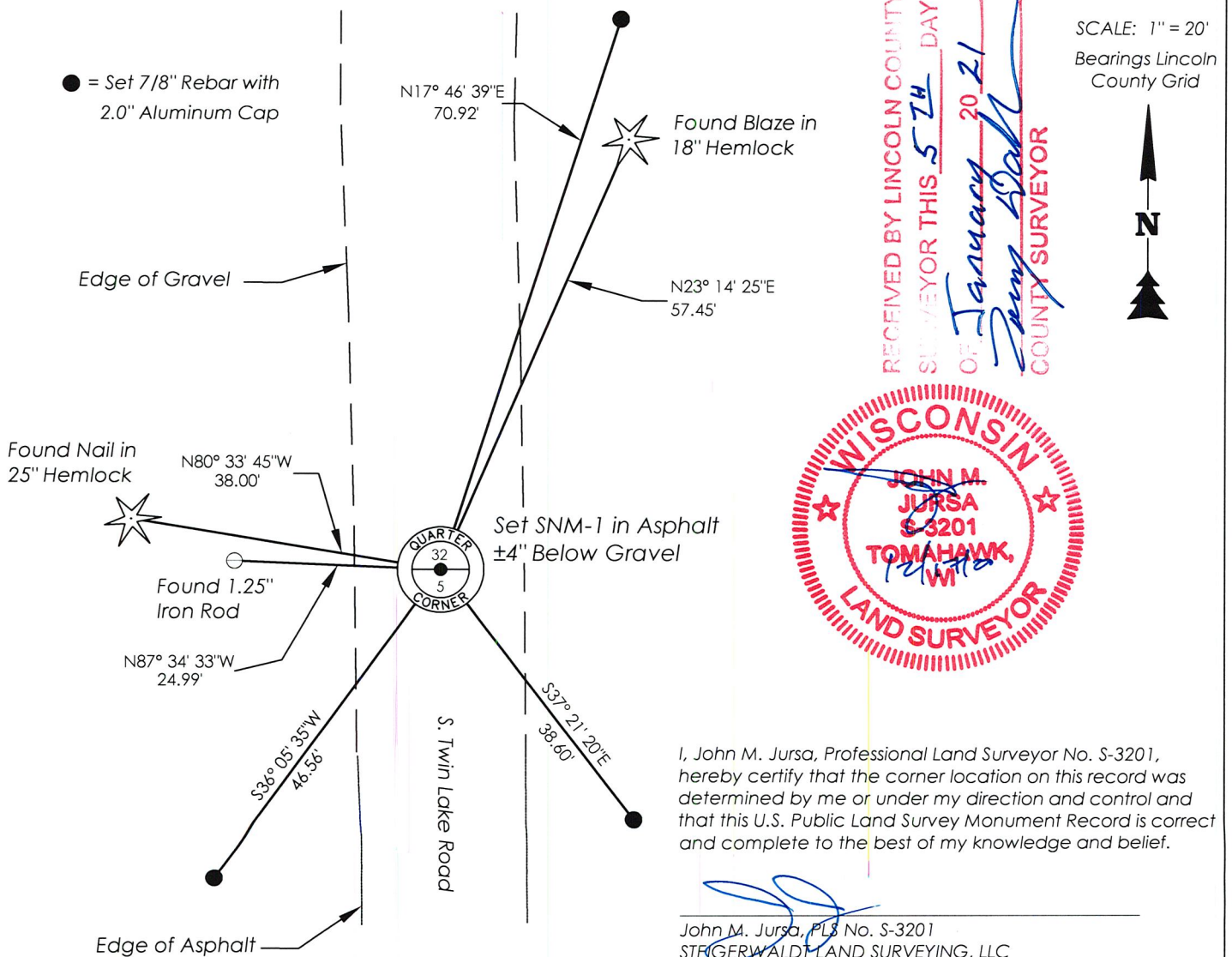
DESCRIPTION OF MONUMENT FOUND AT THIS CORNER AND IF IT WAS ACCEPTED, STATE ALL EVIDENCE (MATERIAL, TESTIMONIAL, OCCUPATIONAL, PLATS, RECORDS, OTHER MONUMENTS) USED AS A BASIS FOR ACCEPTING. IF NOT ACCEPTED OR IF NOTHING WAS FOUND, STATE EVIDENCE USED AS BASIS FOR ESTABLISHING LOCATION. IF RE-ESTABLISHED THROUGH LOST CORNER PROPORTIONATE METHODS, INDICATE ALL MONUMENTS, DISTANCES AND DIRECTIONS USED TO ESTABLISH. INDICATE TYPE OF MONUMENT AND SIGN POST FOUND OR SET.

5/17/1954 - Per Tiesheet from Stuart Foltz dated 1/28/1974 Anton V. Kordick established the corner and had a 20" Hemlock bearing N83°W, 38'.

1/28/1974 - Stuart Foltz found the bearing tree described above and used that to establish the corner. He set a Berntsen Monument in Twin Lakes Road and established ties.

12/9/2020 - Visited corner location and did not find evidence of monument. I found three ties from Foltz's tiesheet and used the Hemlock to the northwest and Hemlock to the northeast to re-establish the corner position. I found that this position matched the distance to his witness rod to the west very well and set an SNM-1 in asphalt below ±4" of gravel. I established new ties as shown below.

PLAN VIEW OF CORNER WITH TIES TO AT LEAST 4 WITNESS MONUMENTS. IF IN DISAGREEMENT WITH PREVIOUSLY ESTABLISHED CORNER, SHOW THE DISTANCES BETWEEN THE TWO CORNERS AND ALSO INDICATE THE TIES TO THE DISPUTED.



CERTIFIED LAND CORNER RESTORATION

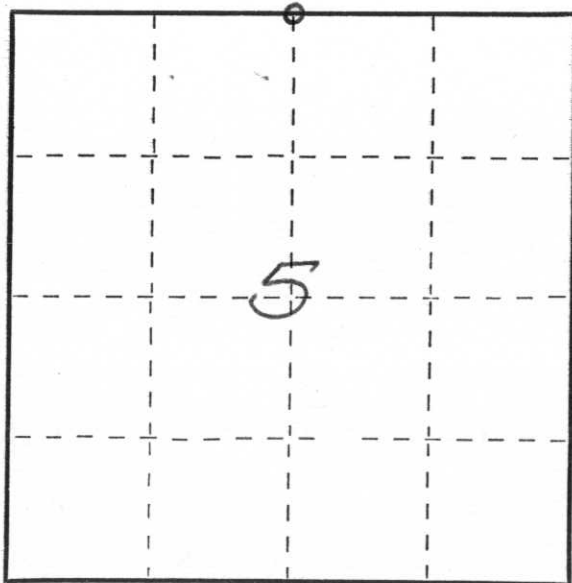
Index No. A-7

State of Wisconsin }
County of LINCOLN } ss.

I Stuart L. Foltz, do hereby certify that on the 28th day of January, 1974, I found evidence of the North one-quarter corner of Section 5 Township 34, North, Range 7 East, Fourth, Principal Meridian, as described hereon; and that from this evidence I established a new monument and accessories as described hereon to perpetuate the original location of this corner.

Resident witnesses:

.....
.....
.....



○ = Corner monument restored.

History of original corner establishment:

Original Surveyor: James N. Marsh
Date of Original Survey: May, 1851
Original corner monument: Wood post
Original Bearing trees: Birch 11" S20°E, 22 lks.
Maple 12" S 8°W, 11 lks.
Maple 10" N44°W, 23 lks.
Birch 8" N71°E, 27 lks.

Description of corner evidence found:

Bearing tree: 20" Hemlock scribed "B.T. 1/4" + 20 years old. Research showed that Anton W. Kordick had established the corner on May 17, 1954 and had a 20" Hemlock bearing N83°W, 38'. Corner apparently obliterated by road work on Twin Lakes Road.

Description of monument and accessories I established to perpetuate the original location of this corner.

Set Berntsen monument - 36" - in Twin Lakes Road
P.K. Nail w/disc in 20" Hemlock N83°W, 38.0'
P.K. Nail w/disc in 10" Ash N46°E, 46.5'
P.K. Nail w/disc in 6" Basswood S70°W, 49.8'
P.K. Nail w/disc in 14" Hemlock N20°E, 57.45'

Set witness iron rod West 25.0'

Dated at Minocqua Wis., this 10th day of December, 1974

Signature Stuart L. Foltz Title Reg. Land Surveyor Registration No. 1170
(County Surveyor, Registered Land Surveyor, or other duly authorized official)

Office of Register of Deeds, County of _____, I hereby certify that the within instrument was filed in this office for record on the _____ day of _____, 19____ at _____ o'clock _____ M.

.....
(Register of Deeds)

By _____ Deputy