

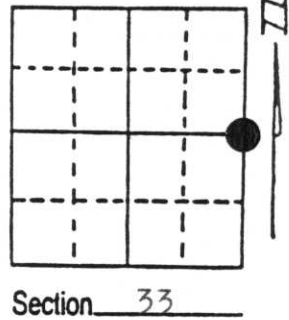
U.S. PUBLIC LAND SURVEY MONUMENT RECORD

Note: This form is intended and designed to fulfill all requirements of Wisconsin Administrative Code, Chapter A-E 7.08 U.S. Public Land Survey Monument Record (3) (a) (b) (c) (d) (e) (f) (g) (h) (i). An additional sheet may be added if necessary to conform with said requirements.

(a) Corner location: Township 35 North
 Range 7 East/West

Town/ ~~King~~ King

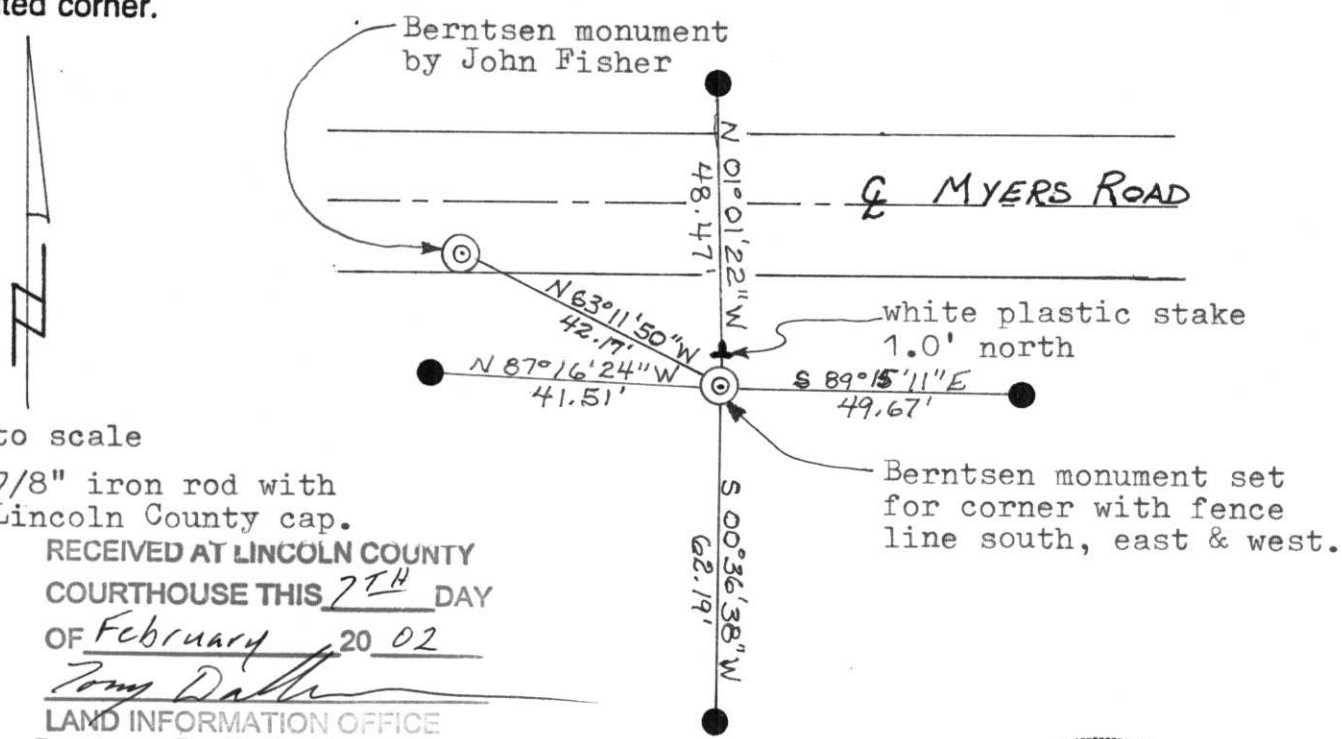
County Lincoln



Section 33

(b) (f) (g) (h) Description of monument found at this corner and if it was accepted, state all evidence (material, testimonial, occupational, plats, records, other monuments) used as a basis for accepting. If not accepted or if nothing was found, state evidence used as basis for establishing location. If reestablished through lost corner proportionate methods, indicate all monuments, distances and directions used to establish. Indicate type of monument found or set and sign post.
 Original Gov't. Survey: June 1861 by Alfred Millard, a white pine 6 for quarter corner with bearings, white pine 7 N 70° E 6 links and white pine 9 N 45° W 21 links. During the 1980's, Guy Myers, an elderly life long resident of this area, showed me the location of numerous irons marking section and quarter section corners. Each of these irons were later determined to be as Guy had said, the section or quarter section corner. During a survey by John Fisher, a Berntsen monument was set for the quarter corner at a single proportion measurement between the section corners. Guy Myers approached me, asking what the Fisher Berntsen monument meant. When I said that John Fisher called for it to be the quarter corner, Guy was quick to show me an existing iron pipe to the southeast of the Berntsen which John had called for as being a witness to his Berntsen. Guy indicated that the iron pipe witness had been used for the quarter corner location since he was a boy, which was even before Myers Road existed as it does today. Using this resident expert witness of Guy Myers, I replaced the iron pipe with a Berntsen monument for the quarter corner and witnessed it as shown below.

(c) (d) (e) Plan view of corner with ties to at least 4 witness monuments. If in disagreement with previously established corner, show the distances between the two corners and also indicate the ties to the disputed corner.



Not to scale

● = 7/8" iron rod with Lincoln County cap.

RECEIVED AT LINCOLN COUNTY
 COURTHOUSE THIS 7TH DAY
 OF February 20 02
Lester J. Schmit
 LAND INFORMATION OFFICE

(i) I, Lester J. Schmit
 (type or print name) certify that the corner location on this record was determined by me or under my direction and control and that this U.S. Public Land Survey Monument Record is correct and complete to the best of my knowledge and belief.

Lester J. Schmit Signature 4 Feb 03 Date



Index No. 43-13

CERTIFIED LAND CORNER RESTORATION

Index No. W-13

State of Wisconsin }
County of Lincoln } ss.

History of original corner establishment:

The original Gov't. Survey was performed by Alfred Millard, Deputy Surveyor in October of 1861.

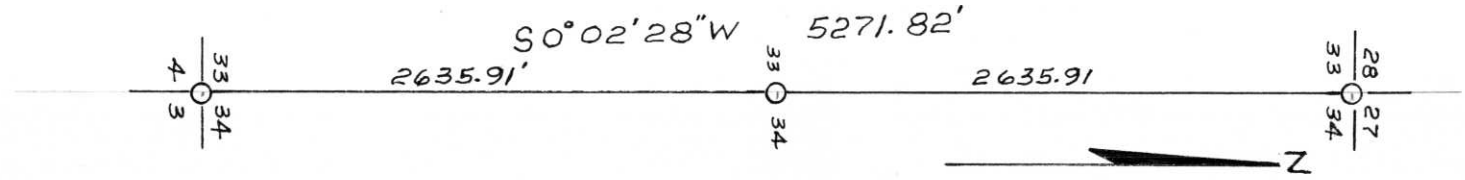
I John H. Fisher, do hereby certify that on the 17th. day of May, 1983, I found evidence of the East one quarter corner of Section 33 Township 35, North, Range 7 East, Fourth, Principal Meridian,

White Pine 6" was set for corner

White Pine 7" N70°E 6 links
White Pine 9" N45°W 21 links

as described hereon: ~~and the from the original location of this corner.~~
as described hereon to perpetuate the original location of this corner.

Description of corner evidence found: Found no evidence of the corner location so I single proportioned the location between the northeast and south-east corners of Section 33, T35N, R7East as shown below.



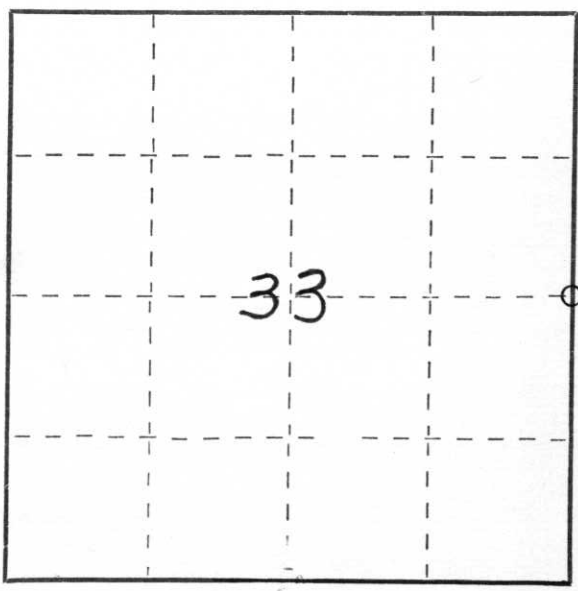
Resident witnesses:

.....
.....
.....

Description of monument and accessories I established to perpetuate the original location of this corner.

Corner set by proportionate measurement:
Lincoln County Berntsen Monument in blacktop 0.2' below surface, 8 feet south of centerline of Meyers Road, stamped to identify corner, 1/4, 33,, 34

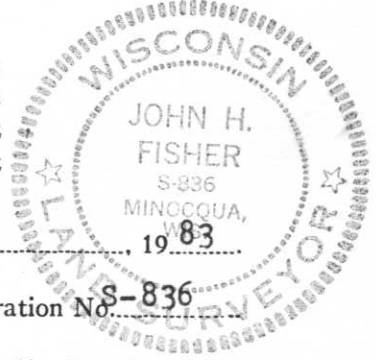
Witness:
1-1/2" iron pipe S63°E 42.17 feet
White Pine 6" S53°W 44.10 feet
Norway Pine 7" N67°E 105.05 feet
Nail in Power Pole N52°W 73.72 feet



○ = Corner monument restored.

Dated at Minocqua, Wis., this 18 day of May, 1983

Signature John H. Fisher Title Registered Land Surveyor Registration No. S-836
(County Surveyor, Registered Land Surveyor, or other duly authorized official)



Office of Register of Deeds, County of....., I hereby certify that the within instrument was filed in this office for record on the..... day of....., 19..... at..... o'clock..... M.

(Register of Deeds)

By..... Deputy



31 3:58 PM



31 4:01 PM



31 4:04 PM