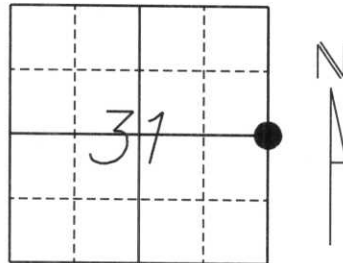


U.S. PUBLIC LAND SURVEY MONUMENT RECORD

Note: This form is intended and designed to fulfill all requirements of Wisconsin Administrative Code, Chapter A-E 5.02, U.S. Public Land Survey Monument Record (3) (a) (b) (c) (d) (e) (f) (g) (h) (l). An additional sheet may be added if necessary to conform with said requirements.

(a) Corner location: Township 35 North
 Range 7 East
 Town/City/Village KING
 County Lincoln



Section 31

(b) (f) (g) (h) Description of monument found at this corner and if it was accepted, state all evidence (material, testimonial, occupational, plats, records, other monuments) used as a basis for accepting. If not accepted or if nothing was found, state evidence used as a basis for anstablishing location. If reestablished through lost corner proportionate methods, indicate all monuments, distances and directions used to establish.

History of original corner establishment:

Original Survey was done by Alfred Millard in June-July 1861. Original corner was a wooden post with bearing trees:
 6" Spruce S74°W 3 lks.
 7" Spruce S58°E 15 lks.

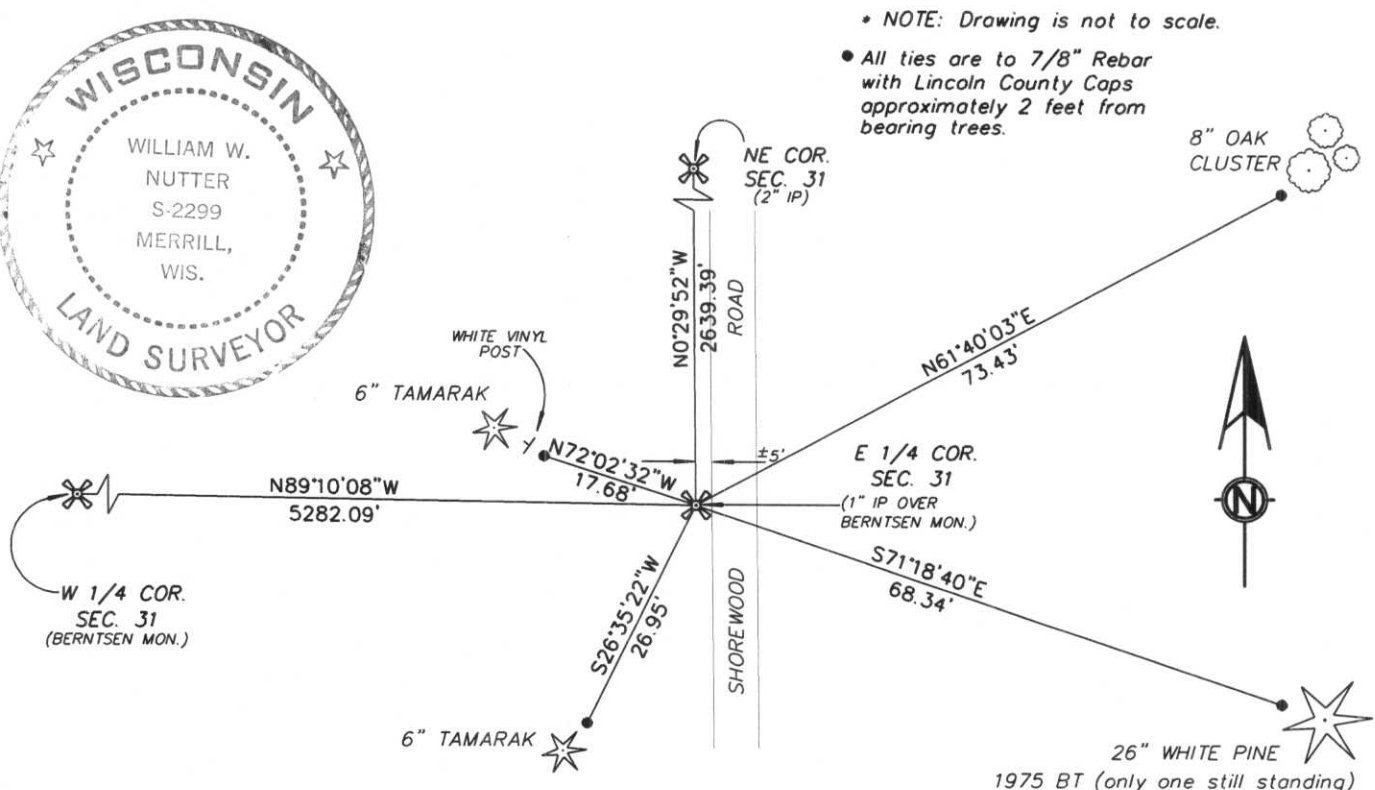
On November 6th, 1975 William F. Kelly located a Railroad rail, he accepted this position and replaced the it with a Berntsen Monument and reset Railroad rail next to Monument as guard with bearing trees:

6" White Birch marked 1/4 S., N41°E 61.2'
 18" White Pine "+" marked at base, S72°E 70.2'
 7" Tamarac marked 1/4 S., N56°W 18.4'

Description of corner evidence found:

We located a 1" (od) Iron Pipe over a Berntsen Monument, Railroad rail not found. We accepted this position and tied to 7/8" Iron Rebars with Lincoln County Caps.

(c) (d) (e) Plan view of corner with ties to at least 4 witness monuments. If in disagreement with previously established corner, show the distances between the two corners and also indicate the ties to the disputed corner.



* NOTE: Drawing is not to scale.

• All ties are to 7/8" Rebar with Lincoln County Caps approximately 2 feet from bearing trees.

(l) I, William W. Nutter RLS, S-2299
 (type or print name) certify that the corner location on this record was determined by me or under my direction and control and that this U.S. Public Land Survey Monument Record is correct and complete to the best of my knowledge and belief.

William W. Nutter

3-10-2004

Index No.

M-5

Signature

Date

(revised 2/97)

CERTIFIED LAND CORNER RESTORATION

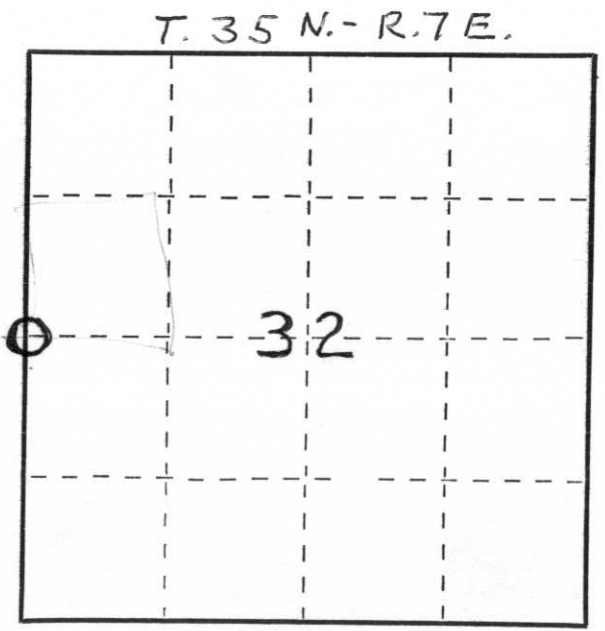
Index No. W-5

State of Wisconsin }
 County of LINCOLN } ss.

I WILLIAM F. KELLY, do hereby certify that on the 6th day of NOVEMBER, 1975, I found evidence of the 1/4 SECTION corner of SECTION 31 & 32 Township 35, North, Range 7 E, Fourth, Principal Meridian, as described hereon; and that from this evidence I established a new monument and accessories as described hereon to perpetuate the original location of this corner.

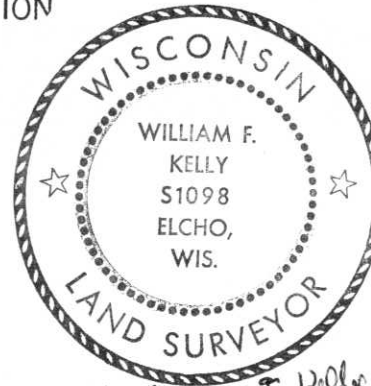
Resident witnesses:

.....



○ = Corner monument restored.

History of original corner establishment:

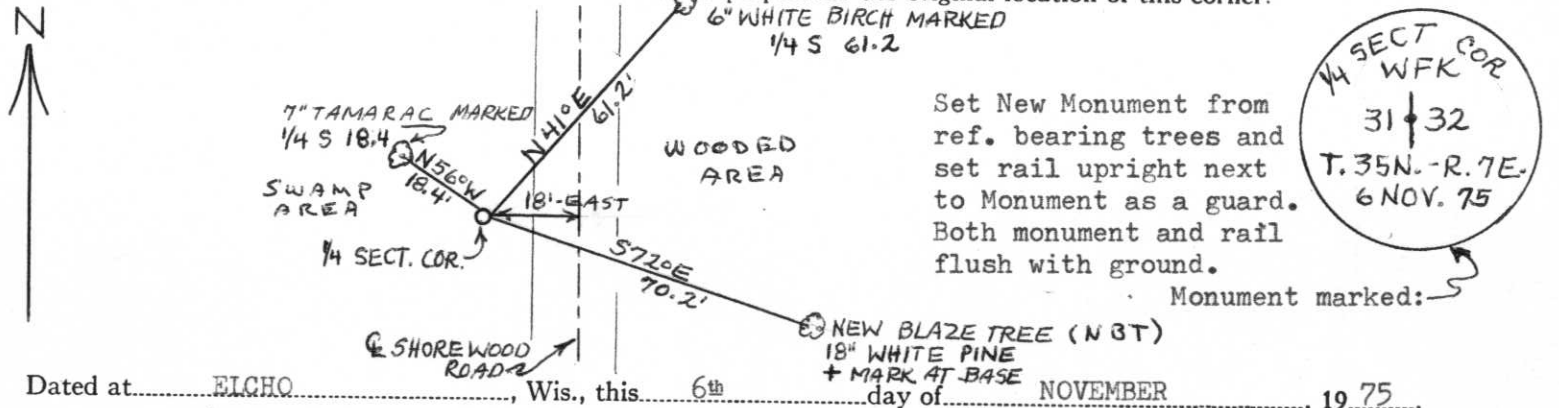


William F. Kelly 8 Nov, 1975

Description of corner evidence found:

Found two bearing trees scribed. Located Railroad rail which was tilted at a 45° angle as a result of an impact with a vehicle.

Description of monument and accessories I established to perpetuate the original location of this corner.



Dated at ELCHO, Wis., this 6th day of NOVEMBER, 1975.

Signature William F. Kelly Title REGISTERED LAND SURVEYOR Registration No. S 1098
 (County Surveyor, Registered Land Surveyor, or other duly authorized official)

Office of Register of Deeds, County of _____, I hereby certify that the within instrument was filed in this office for record on the _____ day of _____, 19____ at _____ o'clock _____ M.

.....
 (Register of Deeds)

By _____ Deputy