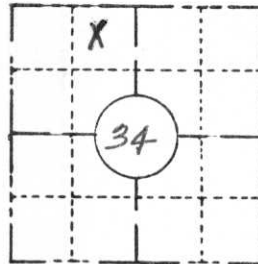


FIELD SURVEY NOTES
PRESERVATION OF LANDMARKS
(Pursuant to Section 59.635(7) Wisconsin Statutes)

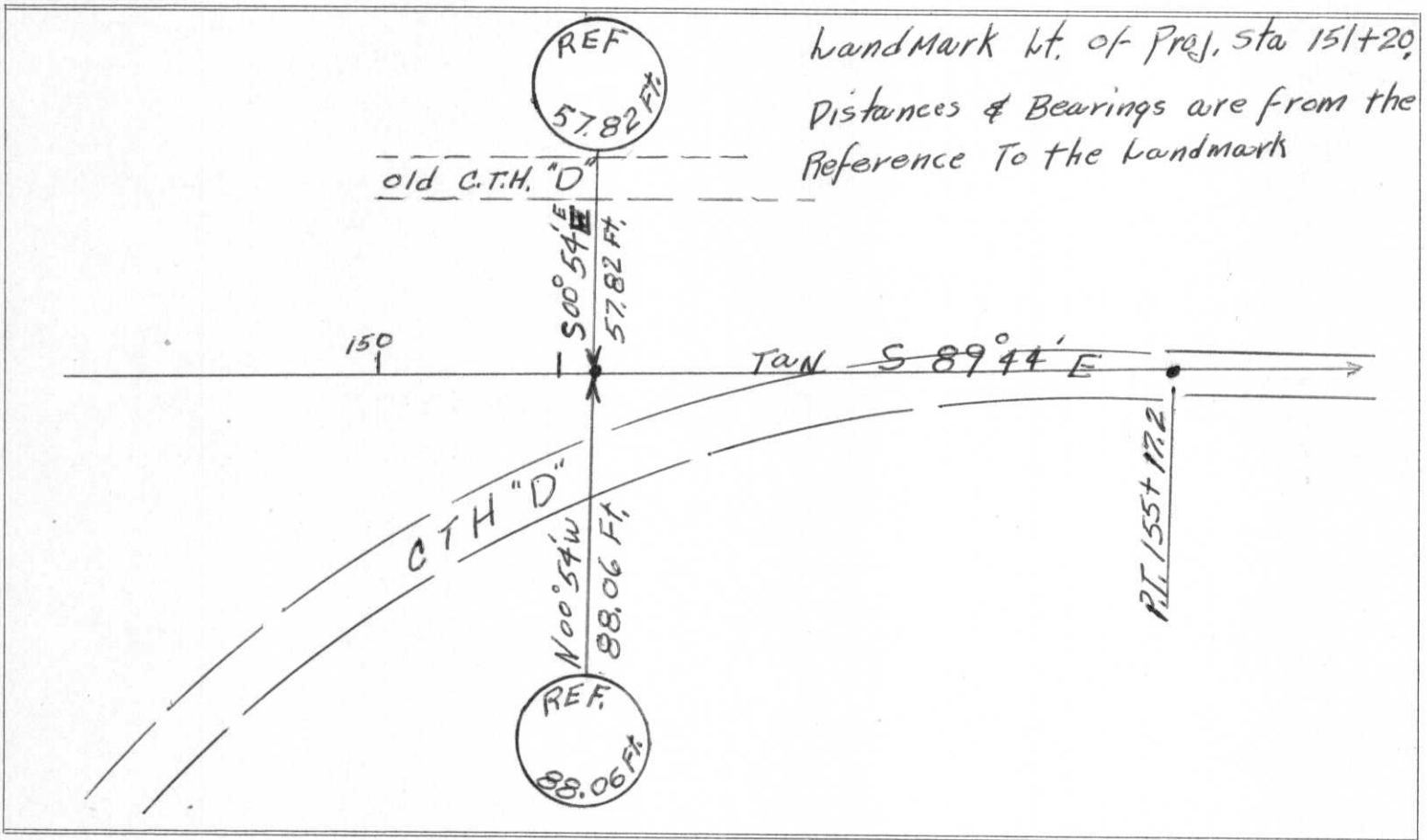
State Highway Commission of Wisconsin
Form E-D-707-65

COUNTY <i>Lincoln</i>		
TOWN <i>King</i>		
HIGHWAY <i>C.T.H 'D'</i>		
SECTION <i>34</i>	TOWNSHIP <i>35 N</i>	RANGE <i>7E</i>
TYPE OF LANDMARK <i>Property line marker</i>		



LOCATION SKETCH
(Location of landmark indicated by "x")

This space for copy of field notes or ties to the above described landmarks

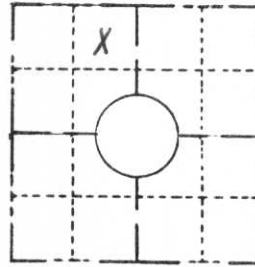


FILED UNDER PROJECT NUMBER <i>S 0567 (2)</i>			COUNTY CLERK'S OFFICE COUNTY OF <i>Lincoln</i> WISCONSIN } SS	
SHC DISTRICT OFFICE NUMBER <i>7</i>	CITY <i>Rhineland</i>	COUNTY <i>Oneida</i>	DATE RECEIVED FOR RECORD <i>2/17/69</i>	DATE COPY SENT TO COUNTY SURVEYOR <i>None</i>
LOCATED OR ESTABLISHED BY NAME <i>J. Martinson</i> TITLE <i>Prod. Eng</i> DATE <i>11-25-68</i>			SIGNATURE OF COUNTY CLERK <i>Ken Aldenberg</i>	

PRESERVATION OF LANDMARKS

(Pursuant to Section 59.635(7) Wisconsin Statutes)

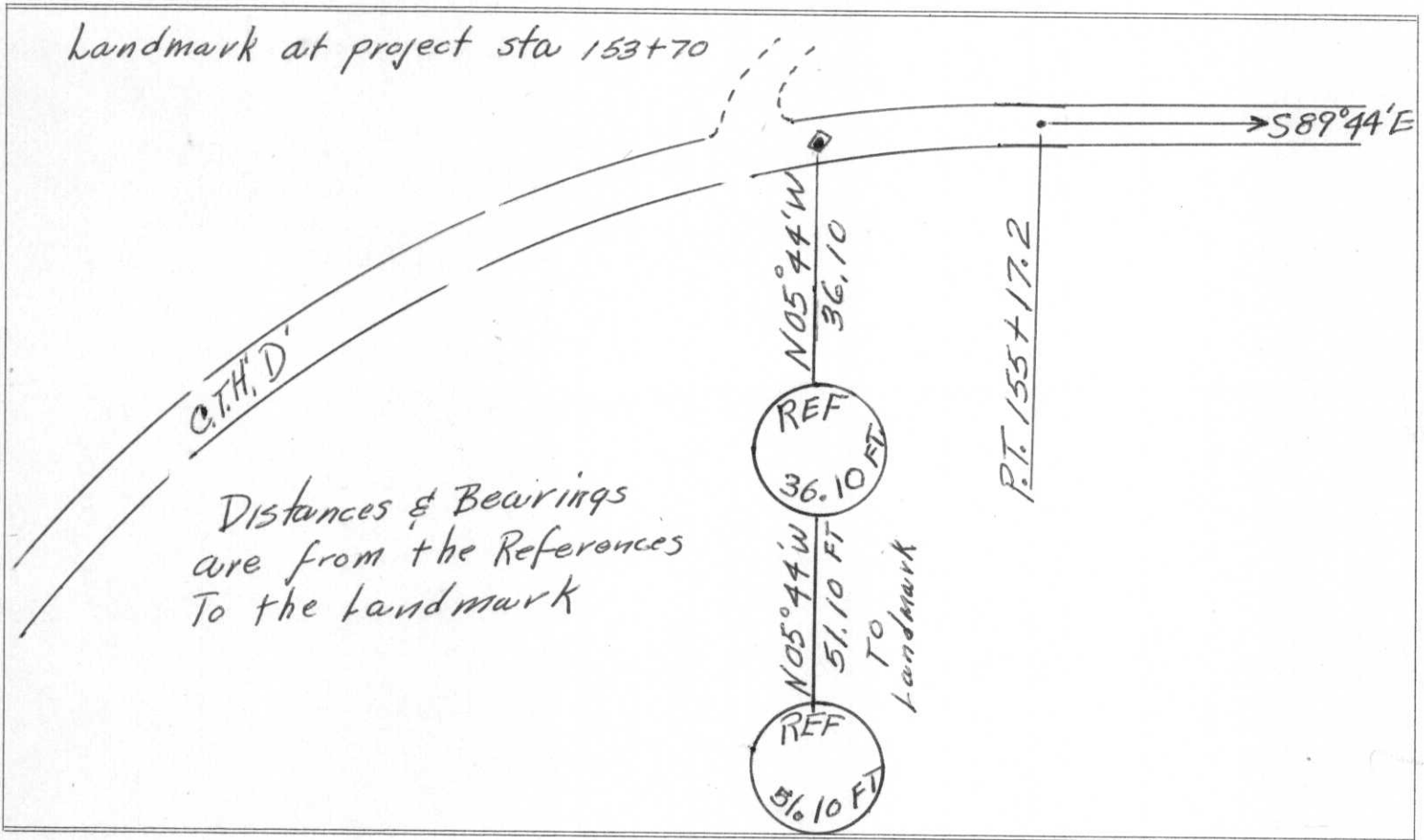
COUNTY <i>Lincoln</i>		
TOWN <i>King</i>		
HIGHWAY <i>C.T.H. 'D'</i>		
SECTION <i>34</i>	TOWNSHIP <i>35 N</i>	RANGE <i>7E</i>
TYPE OF LANDMARK <i>Property line marker</i>		



LOCATION SKETCH
(Location of landmark indicated by "x")



This space for copy of field notes or ties to the above described landmarks



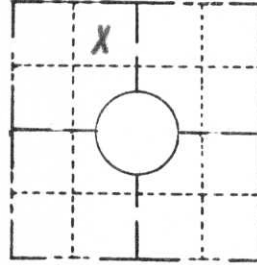
FILED UNDER PROJECT NUMBER <i>S 0567(2)</i>			COUNTY CLERK'S OFFICE		
SHC DISTRICT OFFICE NUMBER <i>7</i>			CITY <i>Rhineland</i>	COUNTY <i>Oncida</i>	COUNTY OF <i>Lincoln</i> WISCONSIN } SS
LOCATED OR ESTABLISHED BY NAME <i>J. Martinson</i>			DATE RECEIVED FOR RECORD <i>2/17/69</i>	DATE COPY SENT TO COUNTY SURVEYOR <i>None</i>	
TITLE <i>Proj. Engr.</i> DATE <i>11-25-68</i>			SIGNATURE OF COUNTY CLERK <i>Ken Aldenberg</i>		

C-V, 14-15

FIELD SURVEY NOTES
PRESERVATION OF LANDMARKS
 (Pursuant to Section 59.635(7) Wisconsin Statutes)

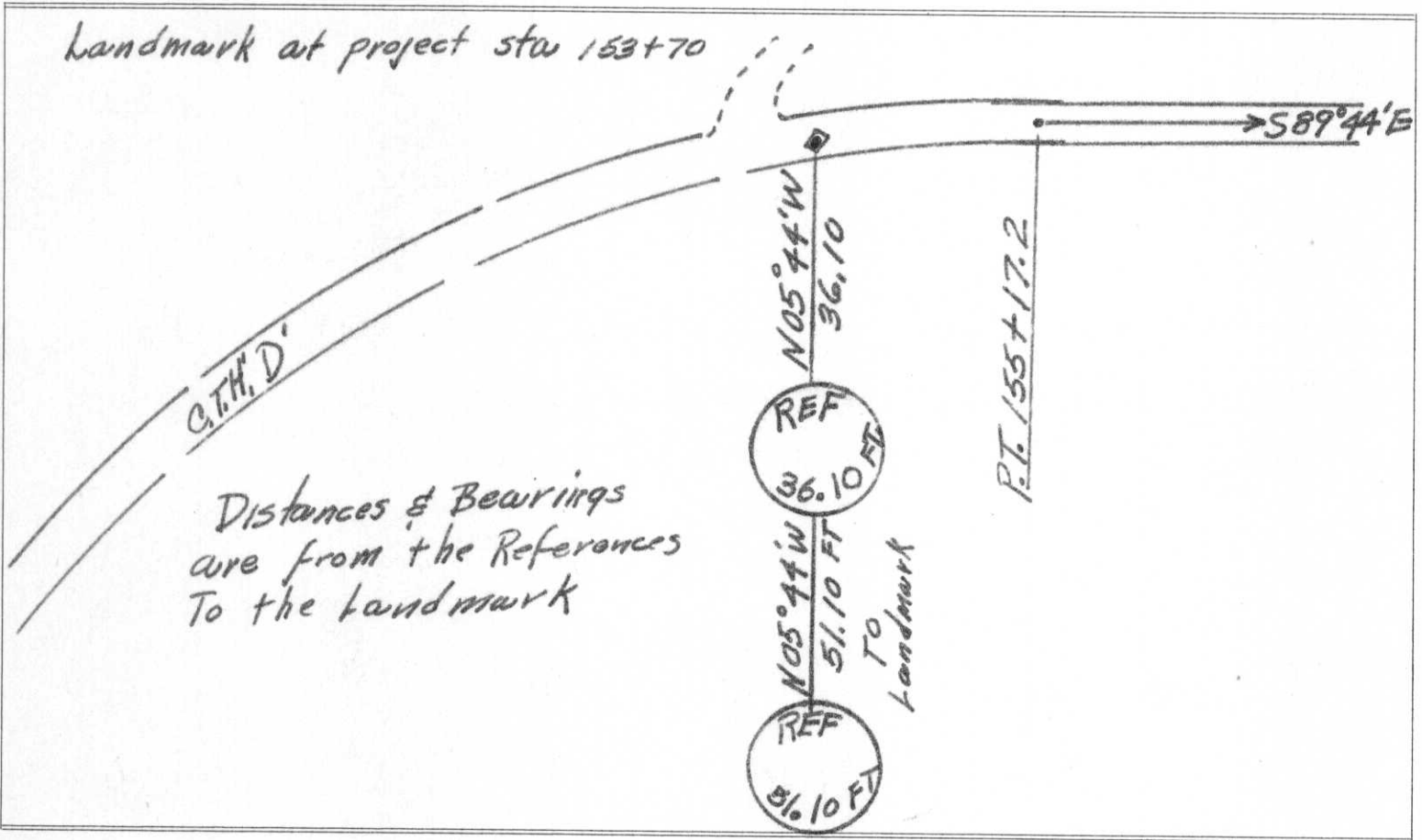
State Highway Commission of Wisconsin
 Form E-D-707-65

COUNTY <i>Lincoln</i>		
TOWN <i>King</i>		
HIGHWAY <i>C.T.H. 'D'</i>		
SECTION <i>34</i>	TOWNSHIP <i>35 N</i>	RANGE <i>7E</i>
TYPE OF LANDMARK <i>Property line marker</i>		



LOCATION SKETCH
 (Location of landmark indicated by "x")

This space for copy of field notes or ties to the above described landmarks



FILED UNDER PROJECT NUMBER <i>S 0567(2)</i>			COUNTY CLERK'S OFFICE	
SHC DISTRICT OFFICE NUMBER <i>7</i>			COUNTY OF <i>Lincoln</i>	WISCONSIN } SS
CITY <i>Rhinelander</i>	COUNTY <i>Oneida</i>		DATE RECEIVED FOR RECORD <i>2/17/69</i>	DATE COPY SENT TO COUNTY SURVEYOR <i>None</i>
LOCATED OR ESTABLISHED BY NAME <i>J. Martinson</i>			SIGNATURE OF COUNTY CLERK <i>Ken Aldenberg</i>	
TITLE <i>Proj. E119.</i>			DATE <i>11-25-68</i>	

2/19/15