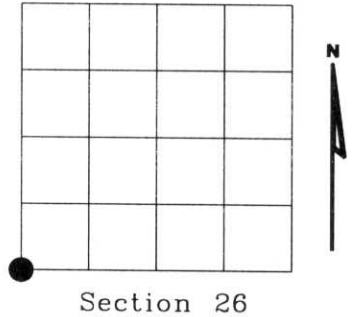


U.S. PUBLIC LAND SURVEY MONUMENT RECORD

NOTE: This form is intended and designed to fulfill all requirements of Wisconsin Administrative Code, Chapter A-E 7.08 U.S. Public Land Survey Monument Record (3)(a)(b)(c)(d)(e)(f)(g)(h)(i). An additional sheet may be added if necessary to conform with said requirements.

(a) Corner location: Township 35 North
 Range 07 East
 Town of KING
 LINCOLN County, Wisconsin



Section 26

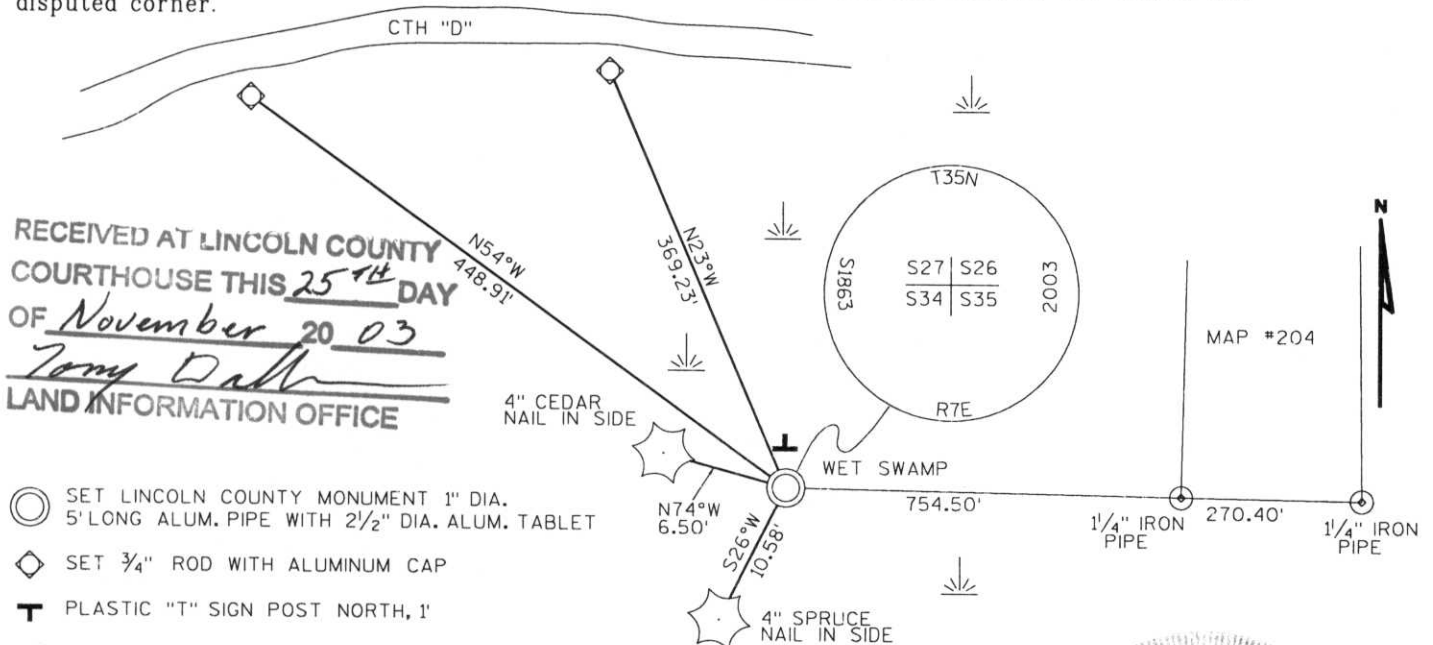
(b)(f)(g)(h) Description of monument found at this corner and if it was accepted, state all evidence (material, testimonial, occupational, plats, records, other monuments) used as a basis for accepting. If not accepted or if nothing was found, state evidence used as basis for establishing location. If reestablished through lost corner proportionate methods, indicate all monuments, distances and directions used to establish. Indicate type of monument found or set and sign post.

1861 - Original corner set by Alfred Millard

2003 - Searched for 2" dia. pipe as shown on Lester J. Schmit map drawing no. 204 a survey for Melvin A. Johnson, Dated Aug. 26, 1977, did not find. Established corner from Schmit survey as shown on map no. 204. Set Lincoln Co. 1" dia. 5' long alum. pipe with 2 1/2" dia. alum. tablet.

Witnessed as shown as below.

(c)(d)(e) Plan view of corner with ties to at least 4 witness monuments. If in disagreement with previously established corner, show the distances between the two corners and also indicate the ties to the disputed corner.



- SET LINCOLN COUNTY MONUMENT 1" DIA. 5' LONG ALUM. PIPE WITH 2 1/2" DIA. ALUM. TABLET
- ◇ SET 3/4" ROD WITH ALUMINUM CAP
- T PLASTIC "T" SIGN POST NORTH, 1'

(i) I, Dennis Roberts, Registered Land Surveyor *S-1863, hereby certify that the corner location on this record was determined by me or under my direction and control and that this U.S. Public Land Survey Monument Record is correct and complete to the best of my knowledge and belief.

Dennis B. Roberts
 Signature

11-04-03
 Date



Index No. 0-17



SURVEY

KK-9