

CERTIFIED LAND CORNER RESTORATION

Index No. U-15

State of Wisconsin }  
County of Lincoln } ss.

History of original corner establishment:

Surveyor: Alfred Millard  
Date: 8 August 1860  
Monumentation: Wood Post  
Witnesses: 10" Hemlock, S 40° W, 34 links  
7" Hemlock, N 5° W, 35 links

I Lester J. Schmit, do hereby certify that on the 10th day of August, 1976, I found evidence of the North 1/4 corner of Section 34 Township 35, North, Range 7 East, Fourth, Principal Meridian, as described hereon; and that from this evidence I established a new monument and accessories as described hereon to perpetuate the original location of this corner.

Description of corner evidence found:

A 3" x 3 1/2" x 30" concrete monument with a 4" diameter green wood location post for the corner location. Corner is about 20' north of centreline of County Trunk Highway "D" as now located.

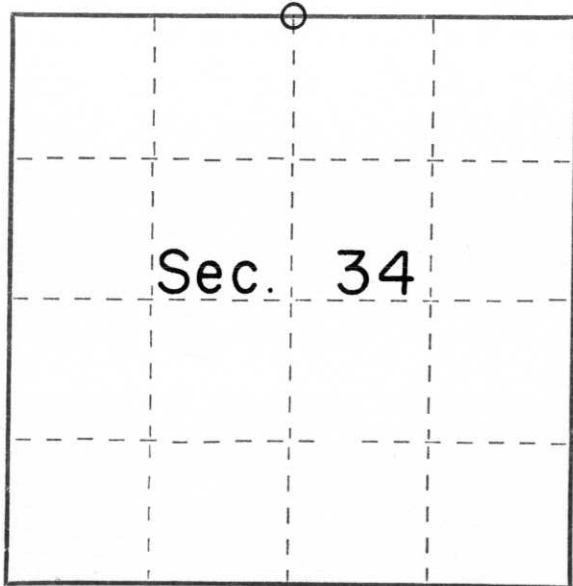
Resident witnesses:

.....  
.....  
.....

Description of monument and accessories I established to perpetuate the original location of this corner.

Replaced the concrete monument with a 30" Berntsen monument for the corner. Placed the concrete monument to the north of the Berntsen monument for easy location of corner.

Witnessed by: 1" iron pipe, N 71° E, 43.53'  
Power Pole, N 41° W, 34.89'  
Power Pole, N 88° W, 17.20'  
Steel right-of-way post, S 4° E, 69.72'



○ = Corner monument restored.

Dated at Tomahawk, Wis., this 4th day of August, 1980

Signature Lester J. Schmit Title Land Surveyor Registration No. S 1192  
(County Surveyor, Registered Land Surveyor, or other duly authorized official)

Office of Register of Deeds, County of \_\_\_\_\_, I hereby certify that the within instrument was filed in this office for record on the \_\_\_\_\_ day of \_\_\_\_\_, 19\_\_\_\_ at \_\_\_\_\_ o'clock \_\_\_\_\_ M.

.....  
(Register of Deeds)

By \_\_\_\_\_ Deputy