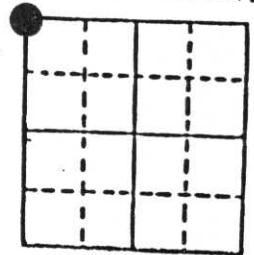


U.S. PUBLIC LAND SURVEY MONUMENT RECORD

Note: This form is intended and designed to fulfill all requirements of Wisconsin Administrative Code, Chapter A-E 5.02, U.S. Public Land Survey Monument Record (3) (a) (b) (c) (d) (e) (f) (g) (h) (i). An additional sheet may be added if necessary to conform with said requirements.

(a) Corner location: Township 35 North
 Range 7 East

Town King
 County Lincoln

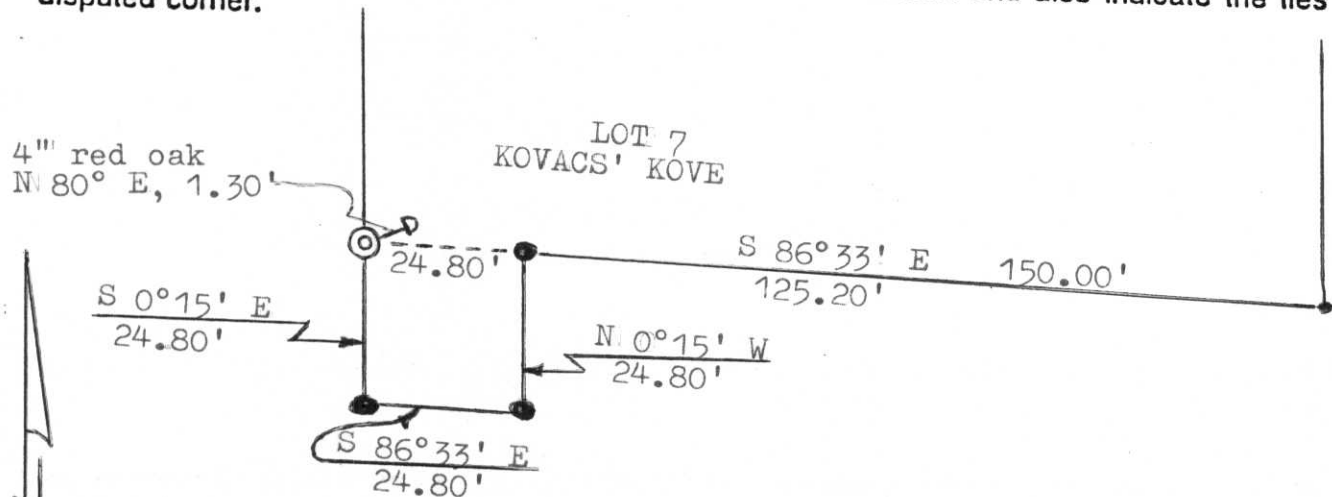


Section 32

b) (f) (g) (h) Description of monument found at this corner and if it was accepted, state all evidence (material, testimonial, occupational, plats, records, other monuments) used as a basis for accepting. If not accepted or if nothing was found, state evidence used as basis for establishing location. If reestablished through lost corner proportionate methods, indicate all monuments, distances and directions used to establish.

Original Gov't. Survey: June 1961 by Alfred Millard, set wood post for corner with bearings, white pine 16 S 16 W 20 links & white pine 8 N 21 E 22 links. The plat of Kovacs' Kove, Robert H. Winat used this iron pipe for the Section Corner to Sections 29, 30, 31 & 32. I replaced this iron pipe with a Berntsen monument for the Section Corner.

c) (d) (e) Plan view of corner with ties to at least 4 witness monuments. If in disagreement with previously established corner, show the distances between the two corners and also indicate the ties to the disputed corner.



Not to scale.
 • 3/4" iron rod found.
 • 1 1/4" iron rod found & set.

(i) I, Lester J. Schmit
 (type or print name) certify that the corner location on this record was determined by me or under my direction and control and that this U.S. Public Land Survey Monument Record is correct and complete to the best of my knowledge and belief.

Lester J. Schmit 10 Dec 90
 Signature Date



Index No. U-5