

U.S. PUBLIC LAND SURVEY MONUMENT RECORD

NOTE: This form is intended and designed to fulfill all requirements of Wisconsin Administrative Code, Chapter A-E 7.08 U.S. Public Land Survey Monument Record (3)(a)(b)(c)(d)(e)(f)(g)(h)(i). An additional sheet may be added if necessary to conform with said requirements.

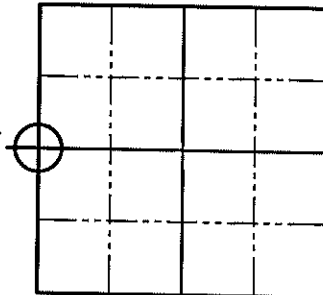
(a) Corner location: Township 35 North

Range 8 East

Town of Harrison

County of Lincoln

W 1/4
Cor.



Section 30



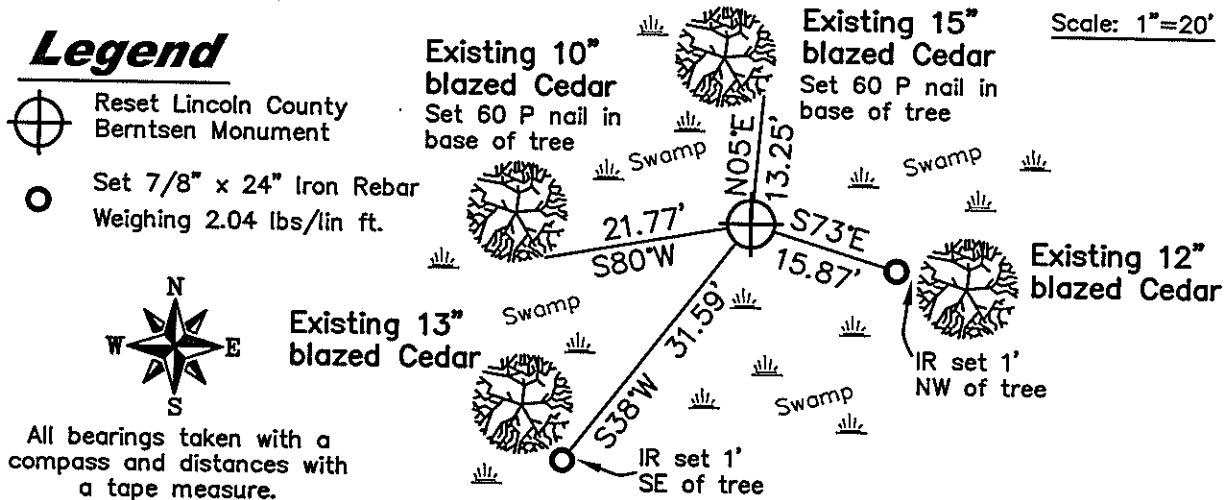
(b)(f)(g)(h) Description of monument found at this corner and if it was accepted, state all evidence (material, testimonial, occupation, plats, records, other monuments) used as a basis for accepting. If not accepted or if nothing was found, state evidence used as a basis for establishing location. If reestablished through lost corner proportionate methods, indicate all monuments, distances and directions used to establish. Indicate type of monument found or set and sign post.

June 1861 – Alfred Millard set original 1/4 post; BT's: 5" Tamarack, S26°E, 16 links; 4" Tamarack, S56°W, 24 links.

June 29, 1979 – John Fisher found a 1-1/2" iron pipe and an old wood post. He replaced the corner with a Lincoln County Berntsen Monument and made new BT's as follows: 8" Cedar, S78°W, 21.3'; 10" Cedar, S70°E, 17.3'; 12" Cedar, N06°E, 12.7'; 12" Cedar, S42°W, 32.2'.

August 28, 2008 – Jonathan W. Dulin found a Lincoln County Berntsen Monument and a 1-1/2" iron pipe in a hole in the swamp. Both monuments were only in the ground a couple of inches and were leaning Westerly. We checked the distances from the existing bearing trees and determined that all measurements were taken from the face of the tree. We reset the Lincoln County Berntsen Monument per the existing bearing trees and set the 1-1/2" iron pipe next to the Berntsen Monument. We also found a rotted-off wood post laying next to the monument. We set new reference corners as shown below.

(c)(d)(e) Plan view of corner with ties to at least 4 witness monuments. If in disagreement with previously established corner, show the distances between the two corners and also indicate the ties to the disputed corner.



(i) I, Jonathan W. Dulin, certify that the corner location on this record was determined by me under my direction and control and that this U.S. Public Land Survey Monument is correct and complete to the best of my knowledge and belief.

Jonathan W. Dulin
Signature



9/2/2008
Date

RECEIVED BY LINCOLN COUNTY
SURVEYOR THIS 28TH DAY
OF October 2008
Tony Dull
COUNTY SURVEYOR

Index No. S-1

CERTIFIED LAND CORNER RESTORATION

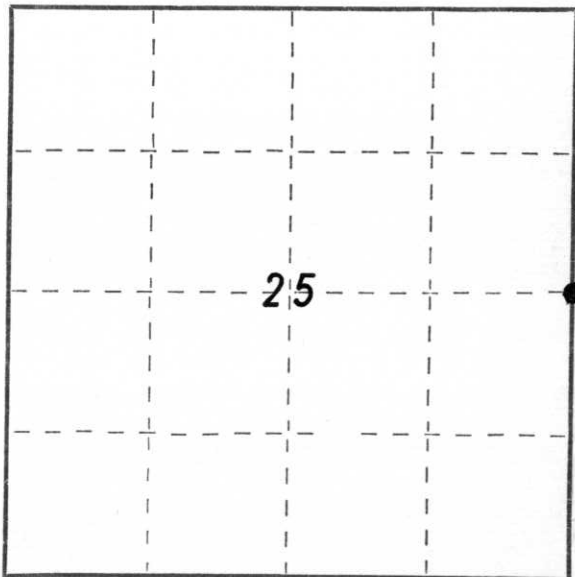
Index No. S-25

State of Wisconsin }
County of Lincoln } ss.

I John H. Fisher do hereby certify that on the 19 day of June, 1979, I found evidence of the east one quarter corner of Section 25 Township 35, North, Range 7, Fourth, Principal Meridian, as described hereon; and that from this evidence I established a new monument and accessories as described hereon to perpetuate the original location of this corner.

Resident witnesses:

none



○ = Corner monument restored.

History of original corner establishment:

Date of Original Survey:
Survey performed by:

June 1861
Alfred Millard - Deputy Surveyor

WITNESSES:

5" Tamarack S26°E, 16 links
4" Tamarack S56°W, 24 links

Description of corner evidence found:

1-1/2" Iron pipe and old post

Description of monument and accessories I established to perpetuate the original location of this corner.

Set Lincoln County Berntsen Monumnet



Witnesses:
8" Cedar, S78°W, 21.3 feet
10" Cedar, S70°E, 17.3 feet
12" Cedar, N6°E, 12.7 feet
12" Cedar, S42°W, 32.2 feet

Dated at Minocqua, Wis., this 29th day of June, 1979.

Signature John H. Fisher Title Registered Land Surveyor Registration No. S-836
(County Surveyor, Registered Land Surveyor, or other duly authorized official)

Office of Register of Deeds, County of _____, I hereby certify that the within instrument was filed in this office for record on the _____ day of _____, 19____ at _____ o'clock _____ M.

(Register of Deeds)

By _____ Deputy