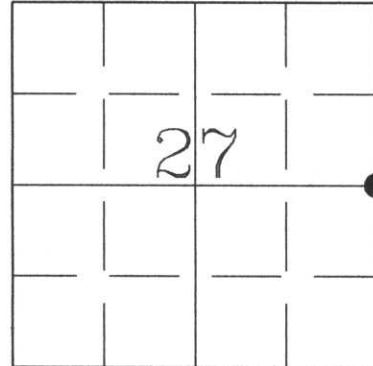


U.S. PUBLIC LAND SURVEY MONUMENT RECORD

HISTORY OF ORIGINAL CORNER ESTABLISHMENT AND SUBSEQUENT RESTORATION AND DESCRIPTION OF ANY RECORD, MONUMENT OCCUPATIONAL, TESTIMONIAL OR OTHER EVIDENCE CONSIDERED:

Original Gov't Survey: June 1861 by Alfred Millard. In 1979, Lincoln Co. Hwy Commissioner Duane Gau placed a 1" iron pin at 1/4 corner location with two reference trees. In 1988, Lester Schmit found Gau's 1" iron pin and the two reference trees and replaced the pin with a Bernsten Monument. In March of 2001, Charley Brinkmeier and Gerry Bahar dug in road by hand and found the Bernsten Monument under the pavement, bearing trees were gone. We set a 1" iron pipe over the monument and retied.

● = LOCATION OF CORNER



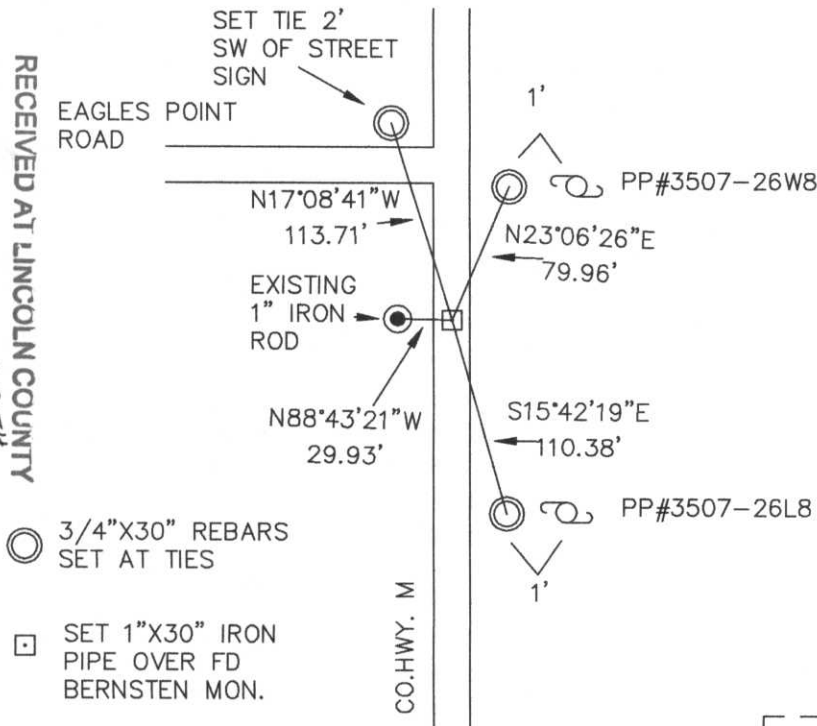
SECTION 27
 TOWNSHIP 35 NORTH, RANGE 7 EAST
 TOWN OF KING
LINCOLN COUNTY, WISCONSIN

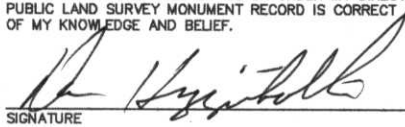
CORNER WAS: (CHECK ALL THAT APPLY)

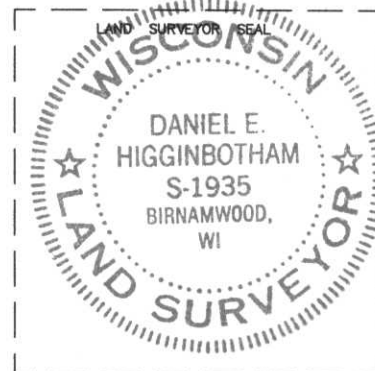
- RESTORED THROUGH ACCEPTANCE OF AN OBLITERATED EVIDENCE LOCATION
- RESTORED THROUGH ACCEPTANCE OF A FOUND PERPETUATED LOCATION
- CONSIDERED A LOST CORNER AND REESTABLISHED THROUGH LOST CORNER PROPORTIONATE METHODS (INCLUDE A PLAN VIEW DRAWING SHOWING DISTANCES AND DIRECTIONS TO OTHER PUBLIC LAND SURVEY CORNERS USED FOR PROPORTIONING AND DETERMINING THE CORNER LOCATION)
- RESTORED OR REESTABLISHED IN A LOCATION THAT DIFFERS FROM A PREVIOUS RESTORATION OR REESTABLISHMENT (INCLUDE A PLAN VIEW DRAWING AND INDICATE WHAT WAS SET AND/OR FOUND)
- CHECK IF THERE IS ADDITIONAL INFORMATION ON BACK

DESCRIBE THE MONUMENT AND ACCESSORIES USED TO PERPETUATE THE LOCATION OF THE CORNER. (INCLUDE A PLAN VIEW DRAWING AND INDICATE WHAT WAS SET AND/OR FOUND) ALSO INCLUDE FOUR TIES TO THE SECTION CORNER AND DESCRIPTION OF THE TIES.

RECEIVED AT LINCOLN COUNTY
 COURTHOUSE THIS 20TH DAY
 OF February 20 02
 LAND INFORMATION OFFICE



DANIEL E. HIGGINBOTHAM
 (type or print name) CERTIFY THAT THE CORNER LOCATION SHOWN ON THIS RECORD WAS DETERMINED BY ME OR UNDER MY DIRECTION AND CONTROL AND THAT THIS U.S. PUBLIC LAND SURVEY MONUMENT RECORD IS CORRECT AND COMPLETE TO THE BEST OF MY KNOWLEDGE AND BELIEF.

 SIGNATURE 2/19/02
 DATE



INDEX NO. _____

S-17

CERTIFIED LAND CORNER RESTORATION

Index No. S-17

State of Wisconsin }
County of Lincoln } ss.

History of original corner establishment:

I Duane A. Gau, do hereby
certify that on the 11 day
of October, 1979, I found
evidence of the W 1/4
corner of Section 26
Township 35, North, Range
7E, Fourth, Principal Meridian,
as described hereon; and that from this evidence
I established a new monument and accessories
as described hereon to perpetuate the original
location of this corner.

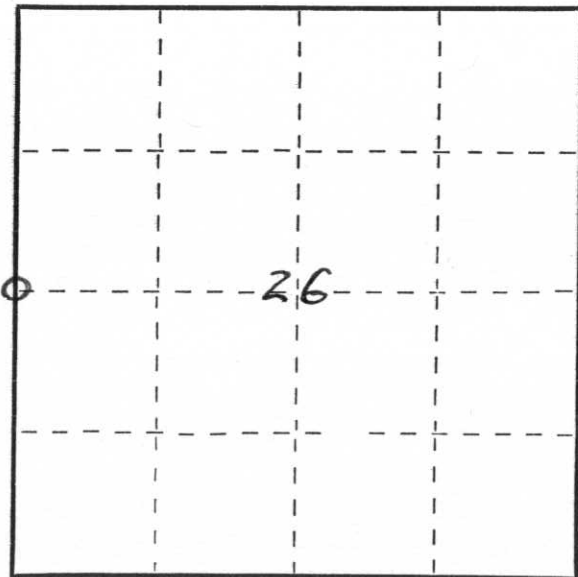
Description of corner evidence found:

Located spike ϵ of paved surface of road.

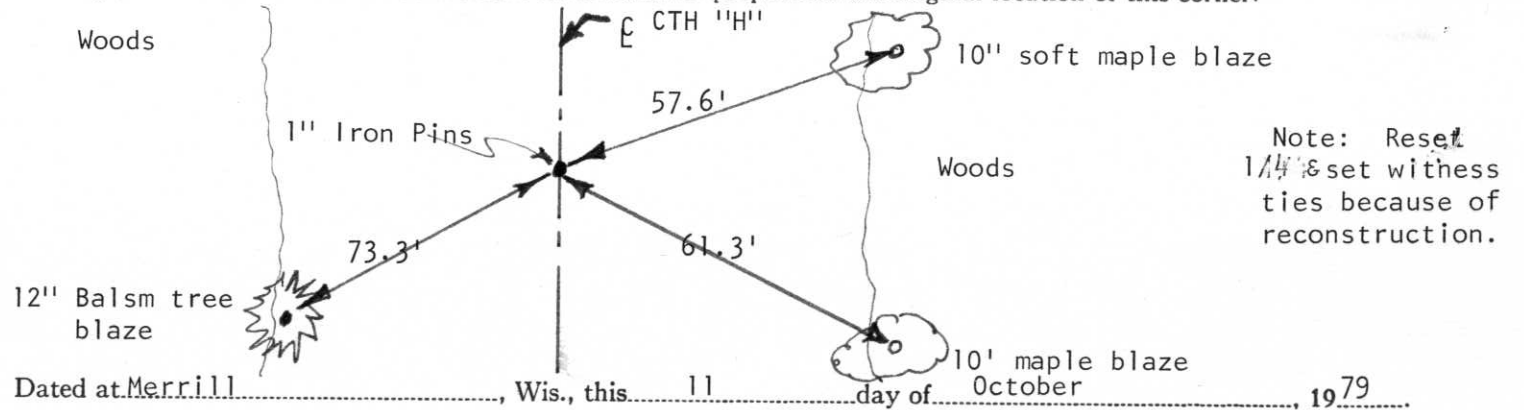
Resident witnesses:

.....
.....
.....

Description of monument and accessories I established to perpetuate the original location of this corner.



○ = Corner monument restored.



Note: Reset
1/4 & set witness
ties because of
reconstruction.

Dated at Merrill, Wis., this 11 day of October, 1979

Signature: Duane A. Gau Title Lincoln Cty. Hwy. Commissioner Registration No.
(County Surveyor, Registered Land Surveyor, or other duly authorized official)

Office of Register of Deeds, County of, I hereby certify that the within
instrument was filed in this office for record on the day of, 19.....
at o'clock M.

.....
(Register of Deeds)

By Deputy



27 12:09 PM



27 12:14 PM



27 12:15 PM